

Old Macdonald Says

WORKSHEET A

There are three sets of directions. Each set is designed for a different learning level, although the same worksheet is used for all exercises.

SIMPLE

1. Circle the hamburger on line one.
2. Draw a line under the hairbrush on line two.
3. Put a rectangle around the ice cream cone on line three.
4. Put an "X" over the cow on line four.

MODERATELY DIFFICULT

1. Put a red "X" on the ice cream bar on line one. Draw a yellow square around the milk carton on line one. Put a blue line under the hamburger on line one.
2. Draw a yellow circle around the radish on line two. Put a red line above the honey bee on line two. Make a blue "X" on the hairbrush on line two.
3. Make a red line under the cheese on line three. Put a blue square around the bacon on line three. Draw a yellow circle around the ice cream cone on line three.
4. Put a blue line above the ducklings on line four. Make a yellow "X" on the cow on line four. Draw a red square around the tractor on line four.

MOST CHALLENGING

1. Circle the two things on line one that are made from milk.
2. Circle the two things on line two that you will find in the garden during the summertime.
3. Circle two things on line three that you do not have to cook before you eat them.
4. Circle the farm animals on line four.

WORKSHEET B

- Line 1—Put a circle around the chick facing to the left.
Line 2—Put a box around the calf facing to the left.
Line 3—Put an "X" on the hen facing to the right.
Line 4—Put a circle around the tractor driving to the right.
Color the remaining animals or machines.

WORKSHEET C

- Line 1—Put a circle around the picture of the food that you can crack, hardboil or dye.
Line 2—Put a box around the tractor facing forward.
Line 3—Put an "X" on the bull.
Line 4—Put a line under a building that can have animals, equipment or hay put in it.

WORKSHEET D

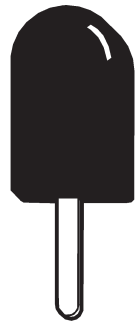
- Explain to students they will be putting an "X" on mommy, daddy or baby, according to the name you read to them. (See the lesson, "Farm Babies.")
- Line 1—Put an "X" on the lamb.
Line 2—Put an "X" on the goose.
Line 3—Put an "X" on the sow.
Line 4—Put an "X" on the chick.

Name _____

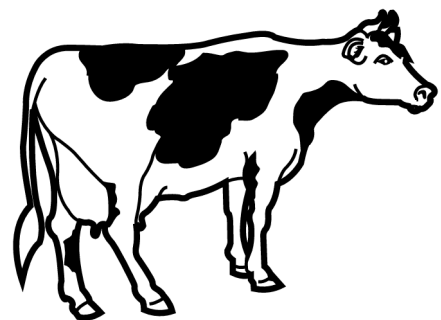
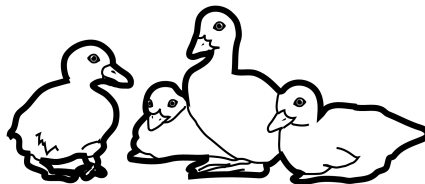
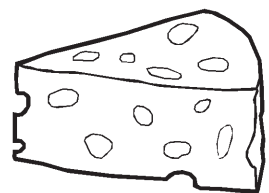
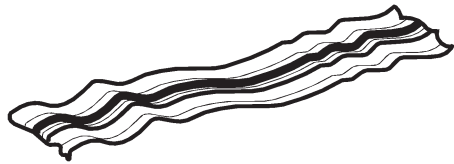
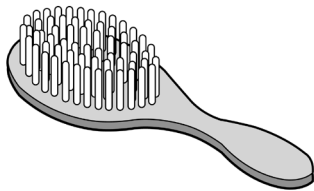
Old MacDonald Says

A

1.



2.



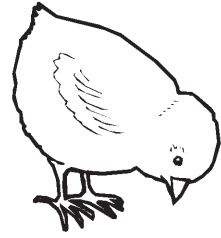
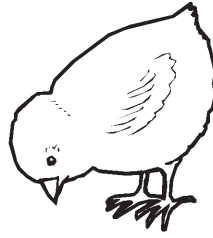
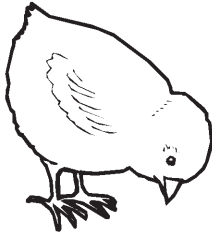
Oklahoma Ag in the Classroom is a program of the Oklahoma Cooperative Extension Service, the Oklahoma Department of Agriculture, Food and Forestry and the Oklahoma State Department of Education.

Name _____

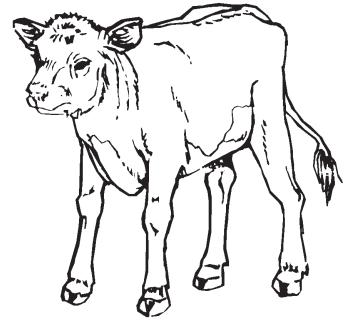
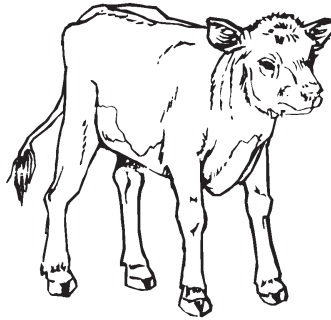
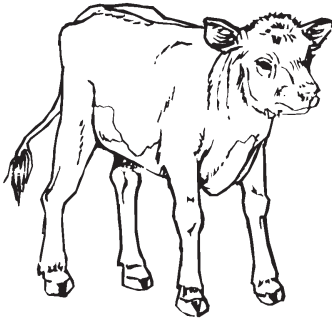
Old MacDonald Says

B

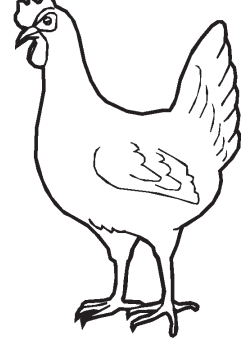
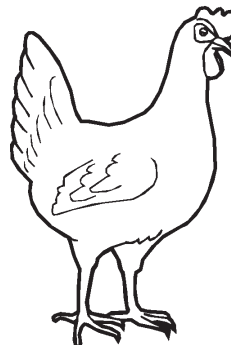
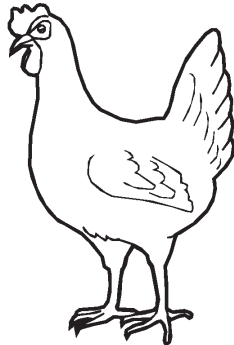
1.



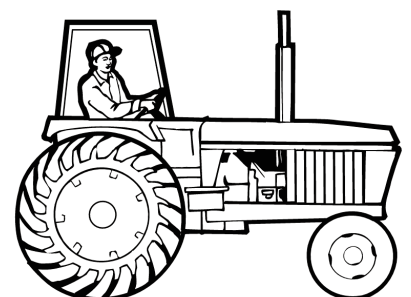
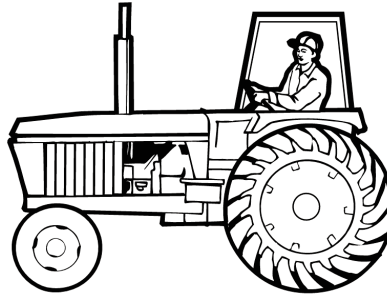
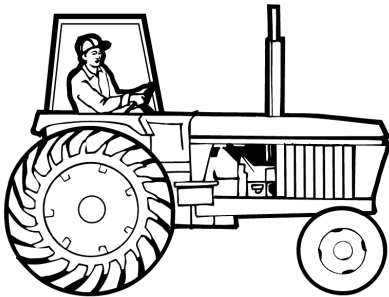
2.



3.



3.

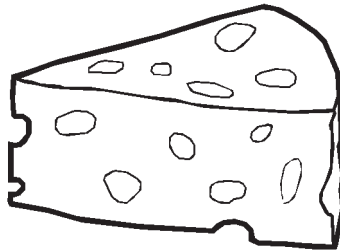
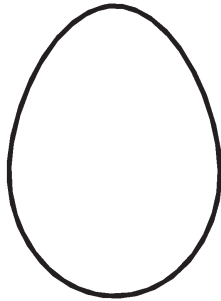


Name _____

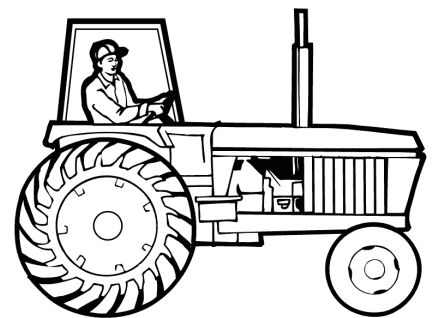
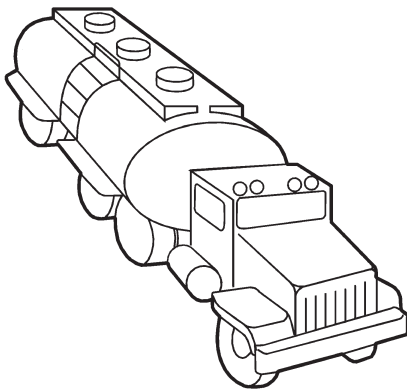
Old MacDonald Says

C

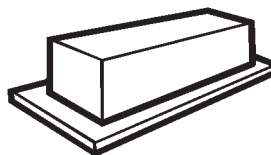
1.



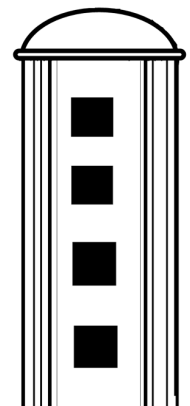
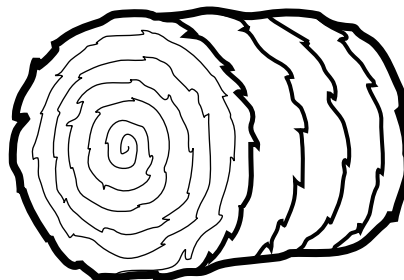
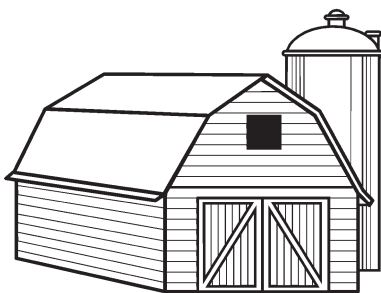
2.



3.



4.



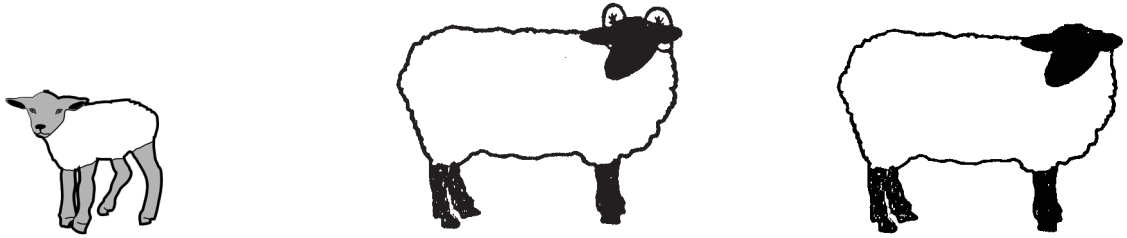
Oklahoma Ag in the Classroom is a program of the Oklahoma Cooperative Extension Service, the Oklahoma Department of Agriculture, Food and Forestry and the Oklahoma State Department of Education.

Name _____

Old MacDonald Says

D

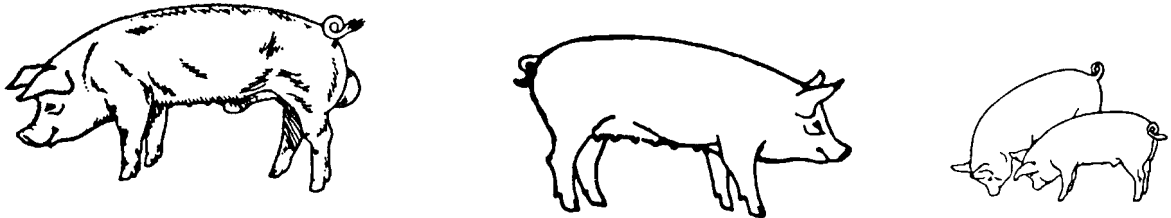
1.



2.



3.



4.

