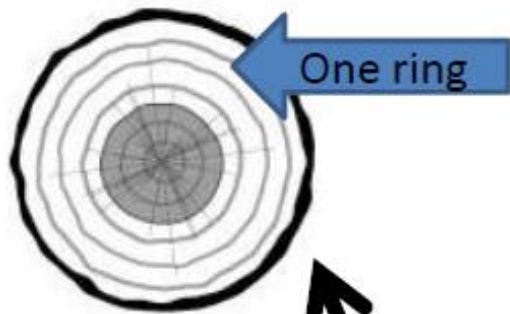
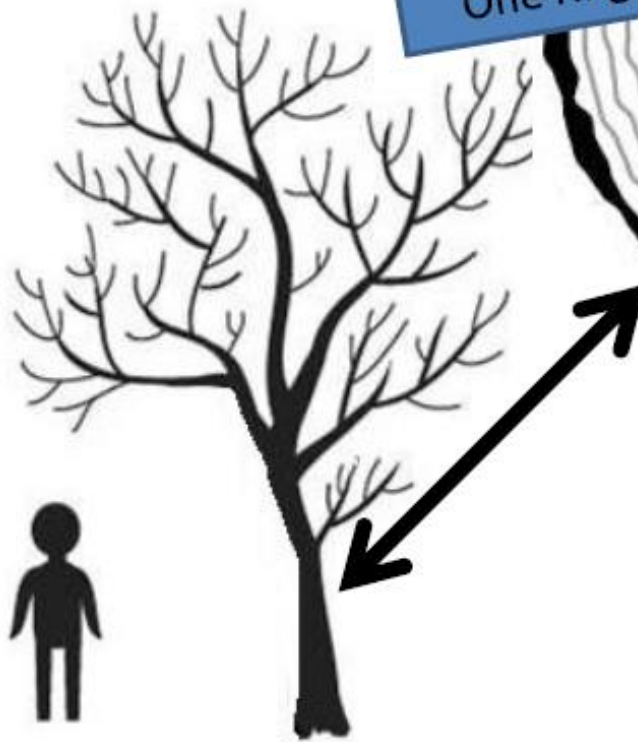


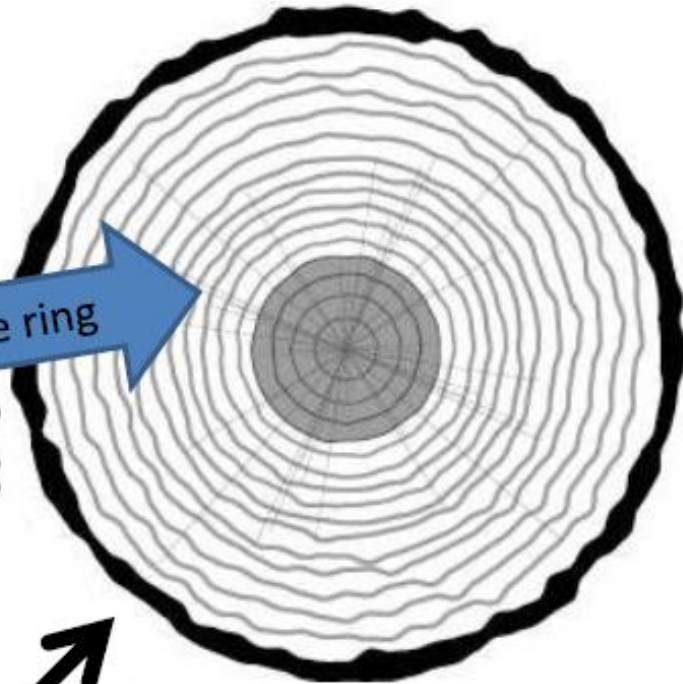
A maple tree grows by adding a new ring of wood each year. By counting the rings we can tell how old a tree is. How old are these trees?



This tree is too young to tap. How many growth rings does it have? _____



This tree is still too small to tap. How many growth rings does it have? _____



Turn to the back of this page when this side is finished

This tree is just big enough to tap for the first time, 10" in diameter. How many rings does this tree have? _____. How many years old is it? _____.

It takes many years for a maple tree to grow big enough to tap, usually 25 to 70 years, less years where it gets lots of sun, more years where crowded by other trees.

One ring

Tree Bark

