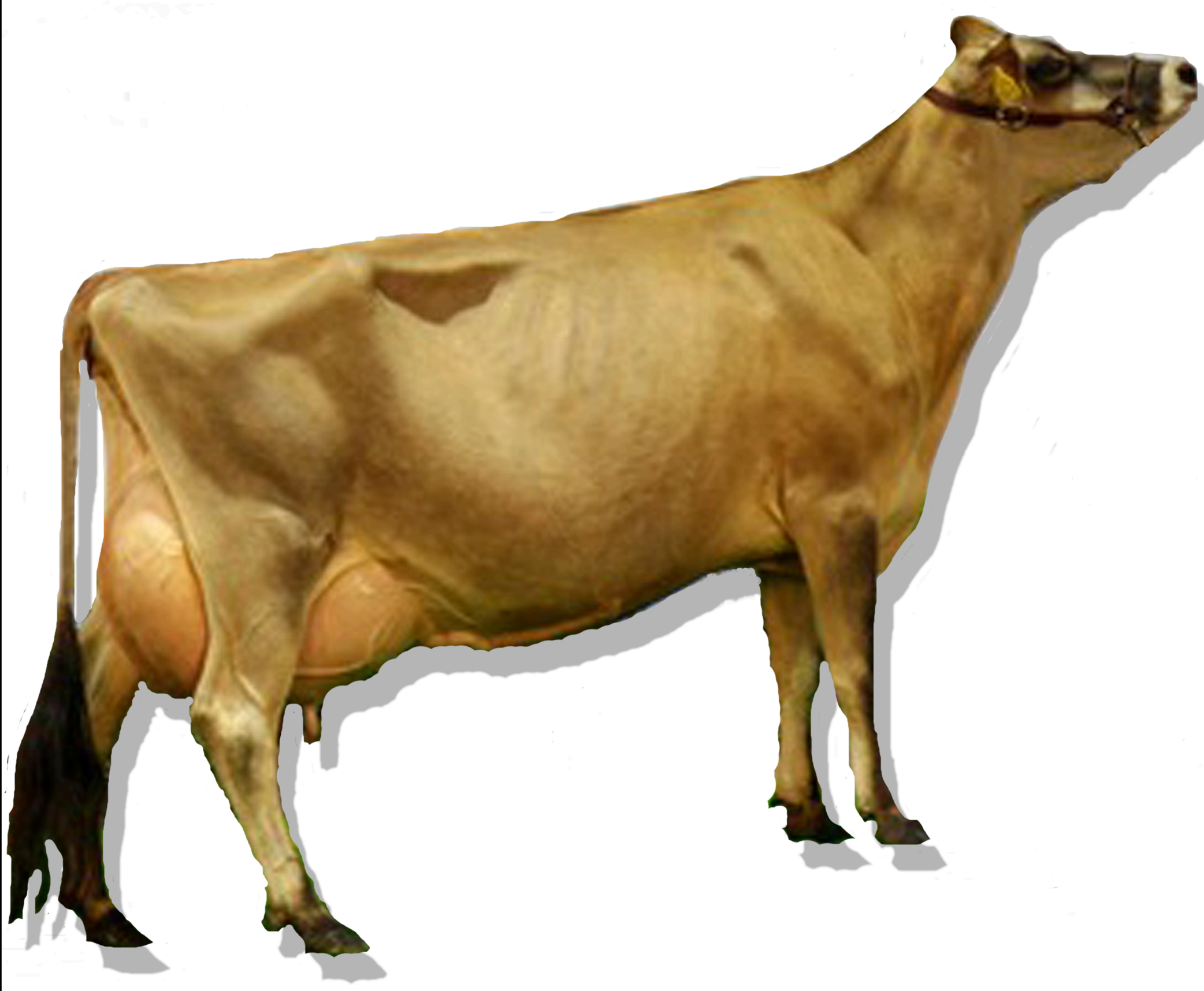


# Dairy Breeds

## Jersey

(JUR-ZEE)



### ORIGIN:

The Island of Jersey  
(off the coast of France)

### COLOR:

A shade of fawn with or  
without white markings &  
a black muzzle

### PRODUCTION (yearly):

16,540 lbs milk  
766 lbs (4.6%) butterfat  
593 lbs (3.8%) protein

### SIZE:

Mature Cow - 1,000 lbs  
Calf at birth - 60 lbs

1815 - The first cows were imported to the U.S. in Delaware.

1868 - The American Jersey Cattle Club was formed.

1994 - The American Jersey Cattle Club changed its name to The American Jersey Cattle Association.

Today - The association has over 3,000 active members with headquarters in Reynoldsburg, Ohio.

Jersey cattle are the smallest in size of the 6 major breeds. They can produce more pounds of milk per pound of body weight than any other breed. Jerseys are known for their beauty & refined dairy type.