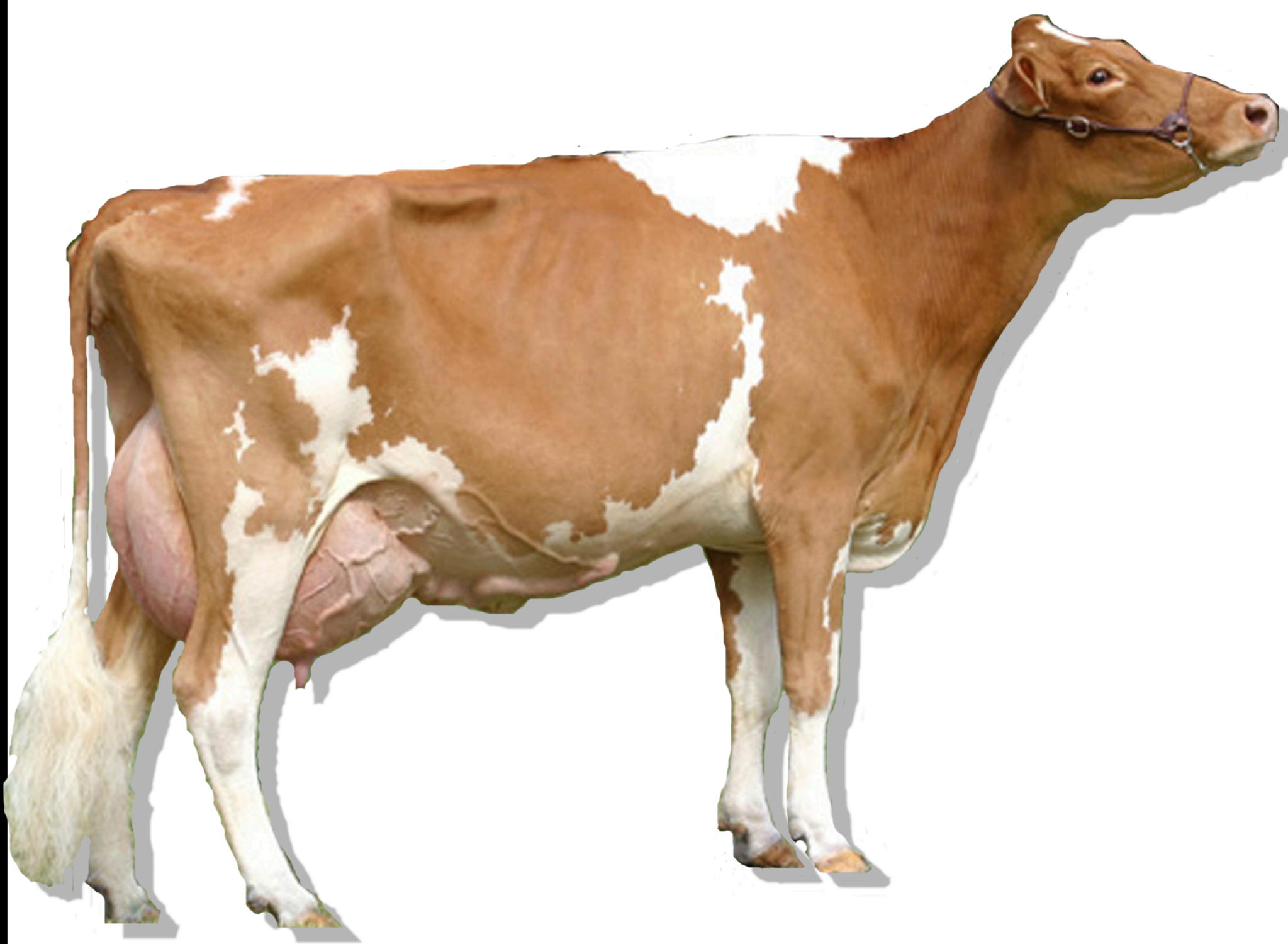


Dairy Breeds

Guernsey

(GURN-ZEE)



ORIGIN:

The Island of Guernsey
(off the coast of France)

COLOR:

Shade of fawn with
white markings

PRODUCTION (yearly):

15,887 lbs milk
476 lbs (3.6%) butterfat
545 lbs (3.3%) protein

SIZE:

Mature Cow - 1,100 lbs
Calf at birth - 70 lbs

960 A.D.- Patient Monks developed the Guernsey Breed.

1840 - Captain Belair of the Schooner Pilot brought 3 Alderney cows to the port of New York. Later, Captain Prince imported 2 heifers & a bull from the Island.

1933 - Admiral Richard E. Byrd took 3 Guernsey cows with him on an expedition to the Antarctic.

Today - The American Guernsey Association (1877) has over 1,300 active members.

Guernseys are known for their ability to produce milk with less feed than other breeds & for the excellent flavor & distinctive golden color of their milk.