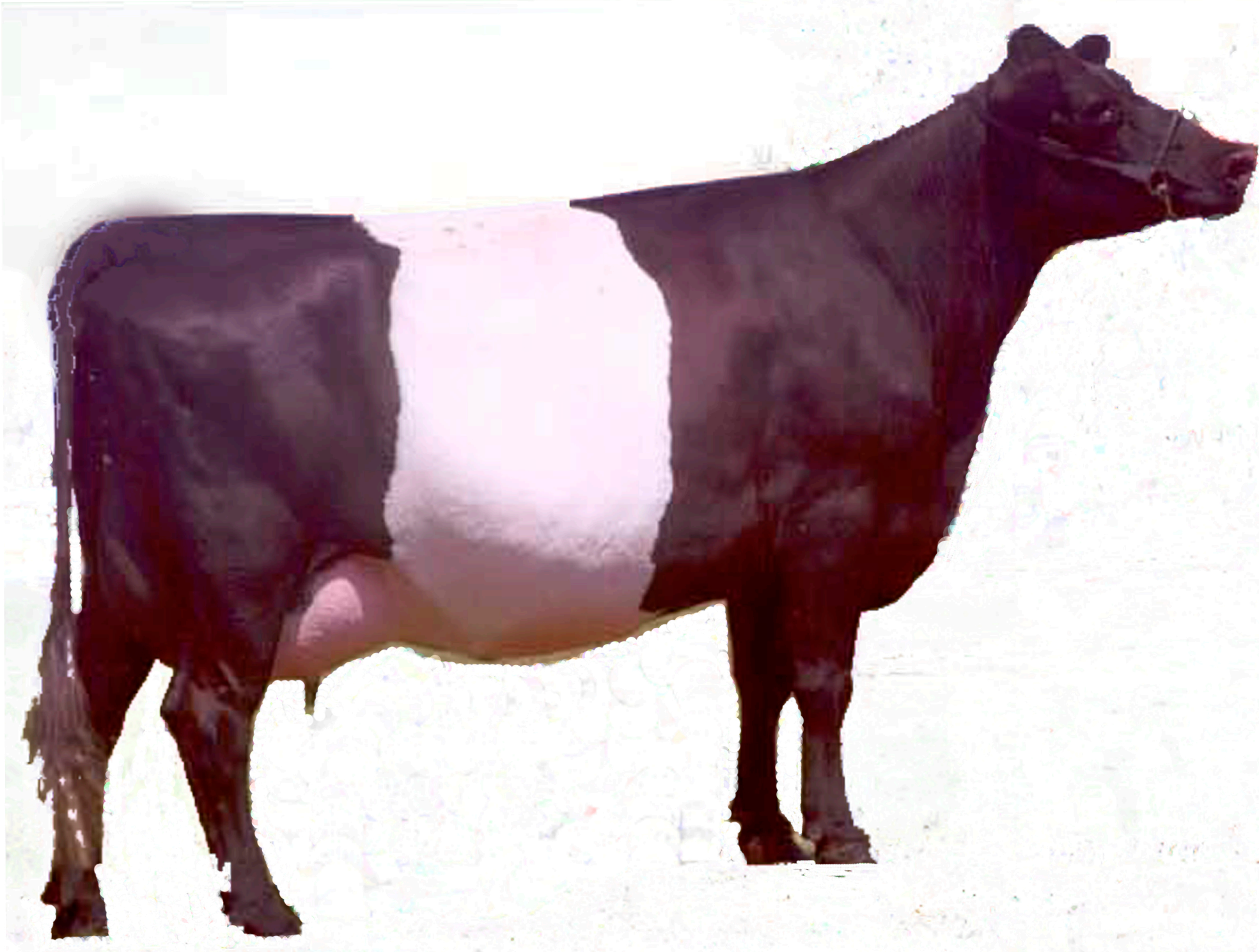


# Dairy Breeds

## Dutch Belt

(AKA: Oreo Cookie Cow)



ORIGIN:  
Netherlands

COLOR:  
Black or Red with White Belt  
(Red & White very rare)

PRODUCTION (yearly):  
up to 20,000 lbs milk  
5.5% butterfat

SIZE:  
Mature Cow - 1,200 lbs  
Calf at birth - 70 lbs

**17th Century** - The breed was then established in the Netherlands by nobility who desired animals with a band of white in the center and both ends black.

**1838** -The first importation into the United States was made by the U.S. Consul of Holland, D.H. Haight.

**1840** - P.T. Barnum, imported several head for exhibition as a feature of his great circus.

**1970's** - The Dutch Belted breed neared global extinction.

**2007** - There were less than 200 registered cattle in the US and fewer than 1000 worldwide.

Dutch Belt milk is believed to be easier to digest due to smaller fat globules.