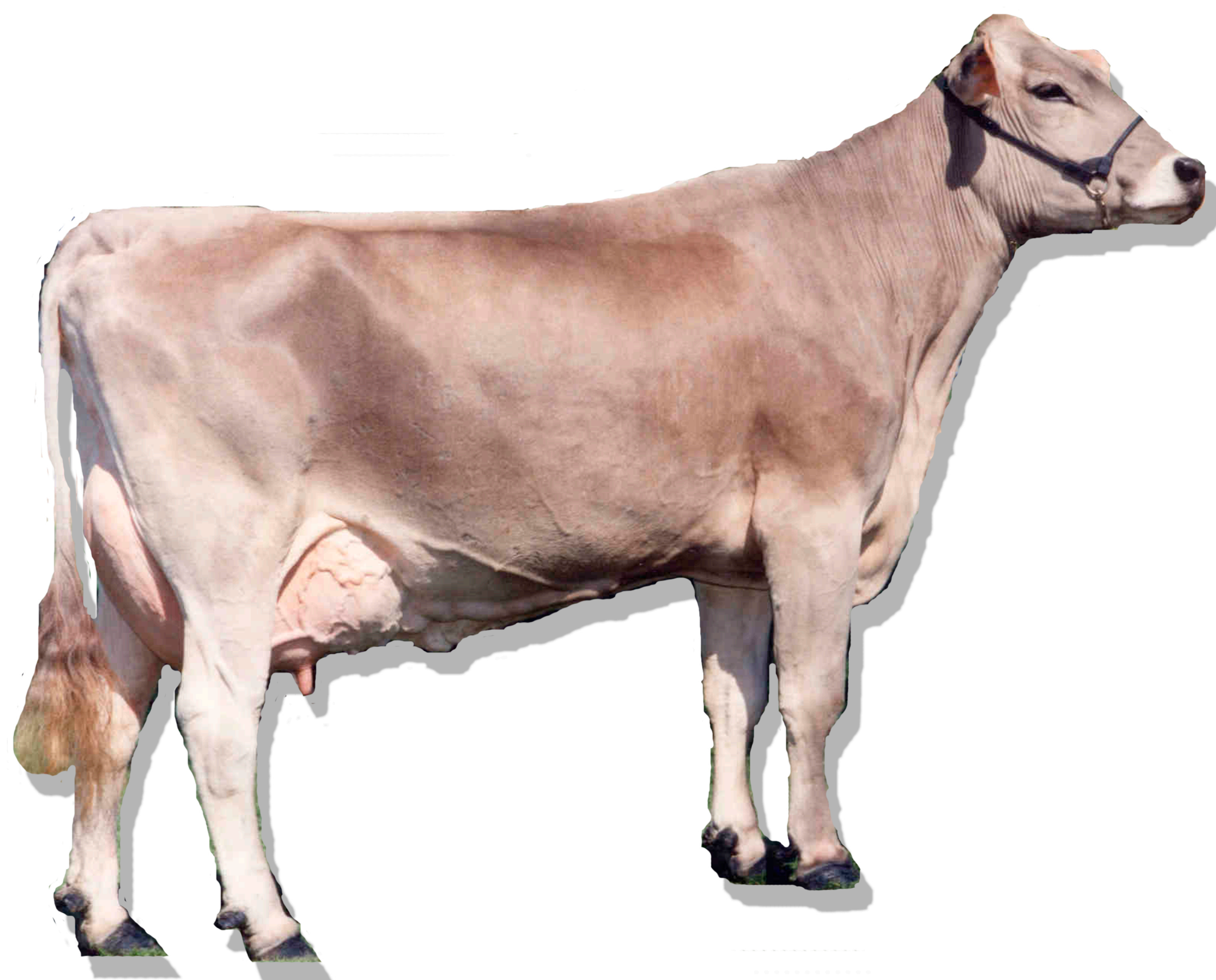


Dairy Breeds

Brown Swiss



ORIGIN:
Switzerland

COLOR:
A solid brown varying
light to dark

PRODUCTION (yearly):
21,440 lbs milk
855 lbs (4.0%) butterfat
702 lbs (3.3%) protein

SIZE:
Mature Cow - 1,400lbs
Calf at birth - 90 lbs

1869 - The first bull and 7 cows were imported to the U.S. & purchased by Henry M. Clark of Belmont, Mass.

MID-LATE 1800's - Approx. 150 head of cattle were imported to the U.S. Nearly all registered animals are descendents of these cattle.

1906 - The Brown Swiss was recognized as an official dairy breed in America.

Today - The Brown Swiss Association (1880) was established in Worcester, Mass. & has over 1700 active members

Brown Swiss have a docile temperment & are known for their ruggedness, strength & vigor. There are relatively small numbers in the U.S. but some estimate there are almost as many Brown Swiss in the world as Holsteins.