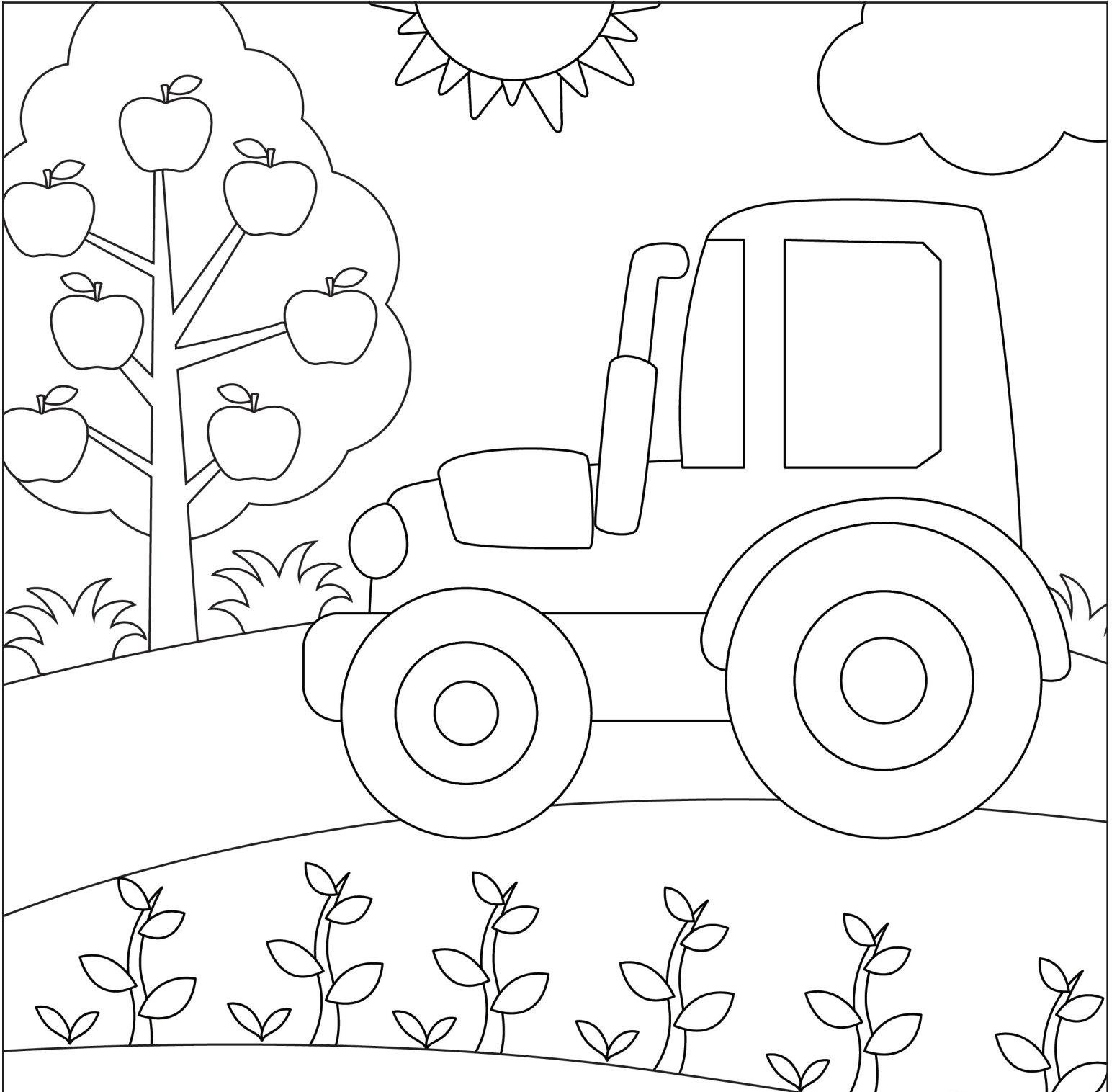


# Adventures in Michigan Agriculture

## 3-5 ACTIVITY BOOK



## AN INTRO TO MICHIGAN AGRICULTURE FOR GRADES 3-5

Michigan farmers grow a variety of commodities all over the Great Lakes State! Michigan ranks #1 in the nation for the following: Dry Black and Cranberry Beans, Begonias, Blueberries, Tart Cherries, Pickling Cucumbers, Easter Lilies, Geraniums, Low Fat Ice Cream Mix, Impatiens, Petunias, and Squash. Michigan also grows more than 300 commodities total which makes us #2 in the nation for being the most agriculturally diverse!

This activity book is full of worksheets for grades 3-5; each lesson focuses on one of the following commodities:  
GRAIN CROPS, FRUITS AND VEGETABLES, HONEY, EGGS, DAIRY, PIGS, SHEEP, FLORICULTURE, CHRISTMAS TREES

## Table of Contents

	<b>Planting the Seed • GRAIN CROPS</b> Word search ..... 3
	<b>Michigan Grown • FRUITS AND VEGETABLES</b> Word/image matching ..... 4
	<b>What's all the Buzz? • HONEY</b> Word scramble ..... 5
	<b>Find the Forest • FORESTRY</b> Find and color ..... 6
	<b>What am I? • EGGS</b> Connect the dots ..... 7
	<b>MOO-ES Code • DAIRY</b> Word/symbol matching ..... 8
	<b>Piggly Wiggly • PIGS</b> Math/color matching ..... 9
	<b>How much do ewe know? • SHEEP</b> Word/image matching ..... 10
	<b>In Full Bloom • FLORICULTURE</b> Word/coloring matching ..... 11
	<b>A Michigan Christmas • CHRISTMAS TREES</b> Counting/coloring ..... 12

## WHAT DO THESE CROPS BECOME?

Michigan farmers raise corn, soybeans, and wheat. Products we use every day are made from these grains. The items listed below are made from either corn, soybeans, or wheat!

Can you find all of these items in the word search? One has been done for you.

N N B E T H A N O L X D O D U V S  
 H D E X A Z C I R I U V P W J M F  
 N D G C S G A K D K N A T G A D L  
 A K F R U F O T M D S E R I B U O  
 Y L X A Y X G Y G T Z L N T R J U  
 S O E Y C T F Q A P E Q M N E M R  
 T O A O P I Z Z A C R U S T A B M  
 A P S N Z C O R N S Y R U P D U A  
 C M P S K K A C O G W W Q N G R N  
 O A D Q R T H Z E M L G Z U S Y J  
 S H W D O O F Y B A B S M E D P P  
 H S N R O C P O P O V O I T F L U  
 E C E R E A L T E Q F K D K A O F  
 L I U D O O F T E P O Q N S W Q I  
 L W V R F W I D O O D V T G Y D J  
 S G D V X R Q H C B H I Y V R A T  
 C O R N S T A R C H C R B M V X K

### Word Bank

#### Corn

POPCORN  
CORN SYRUP  
CORN STARCH  
ETHANOL  
TACO SHELLS  
GUM

#### Soybeans

BABY FOOD  
CRAYONS  
SHAMPOO  
TOFU  
PET FOOD  
PLASTIC

#### Wheat

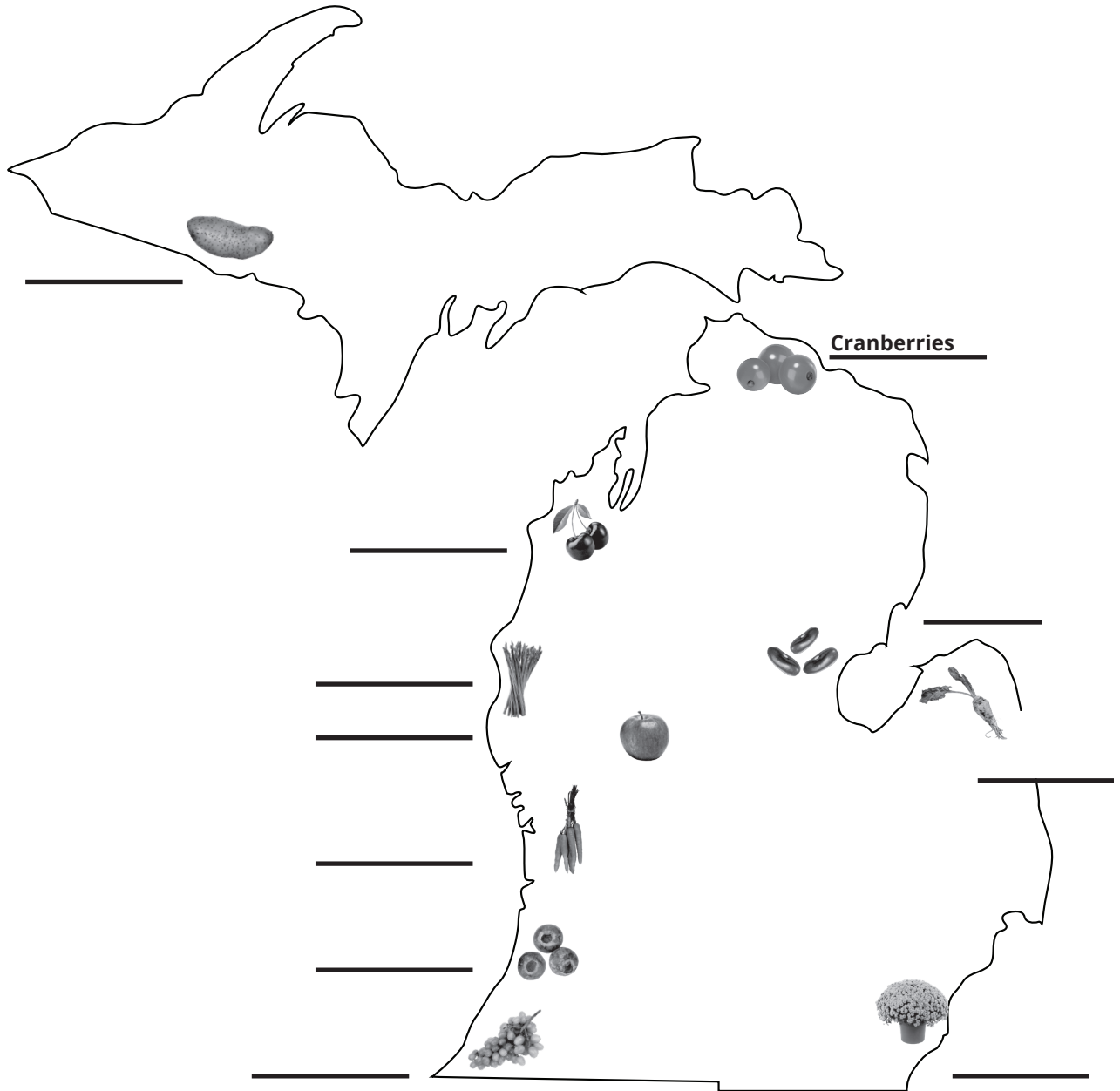
FLOUR  
BREAD  
CEREAL  
PIZZA CRUST  
PASTA  
COOKIES

## WHERE IS IT GROWN?

Michigan grows different fruits and vegetables all over the state!  
Match the produce to where it is grown. One has been done for you.

### Word Bank

- CARROTS
- POTATOES
- APPLES
- CRANBERRIES
- FLOWERS
- GRAPES
- SUGAR BEETS
- BLUEBERRIES
- ASPARAGUS
- DRY BEANS
- CHERRIES



## A SINGLE BEEHIVE PRODUCES 60 POUNDS OF...

Honey bees are raised all over Michigan, farmers use honey bees to pollinate their crops and to make honey.

Can you crack the code below? Unscramble the following words, putting one letter in each space. Then unscramble the circled letters to answer the question below.

OLNLPNTNAIIO

					○					
--	--	--	--	--	---	--	--	--	--	--

LRWFEO

		○			
--	--	---	--	--	--

HVIE

○			
---	--	--	--

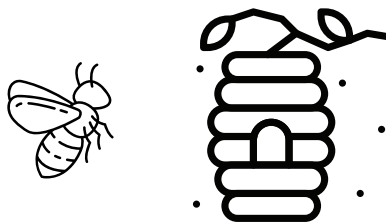
EEB

	○	
--	---	--

CONYBMEHO

				○				
--	--	--	--	---	--	--	--	--

## ONE BEEHIVE WILL PRODUCE 60 POUNDS OF...



○	○	○	○	○
---	---	---	---	---

# Find the Forest

## HOW CLOSE IS THE FOREST?

Michigan forests supply us with clean air, water, and wood. Some farmers raise and harvest trees to build items that are all around you!

Can you find all 10 items in the classroom below that are made from trees?

### Word Bank

CARDBOARD BOX

GUITAR

PICTURE FRAME

BASEBALL BAT

PAPER

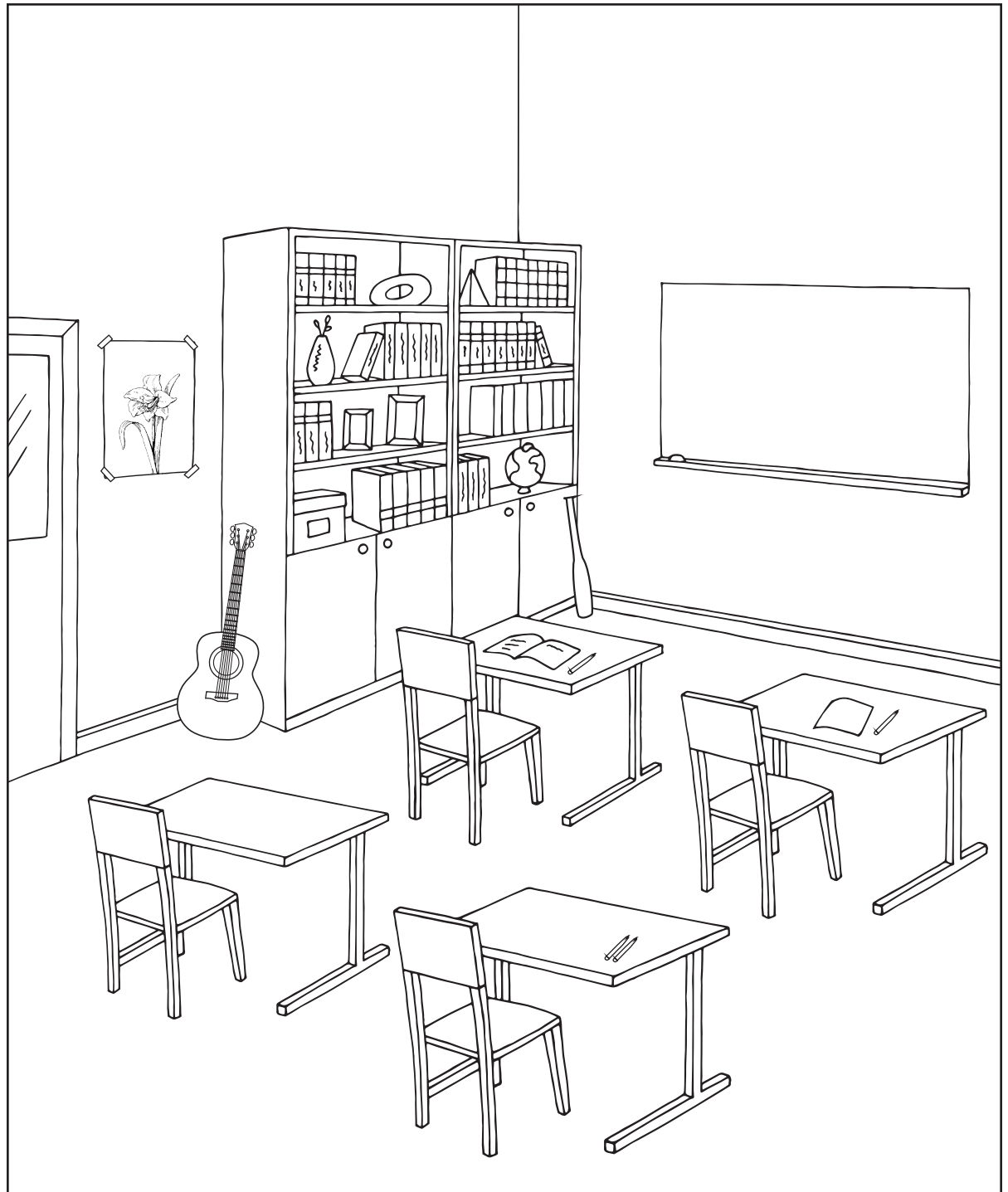
PENCIL

POSTER

BOOK

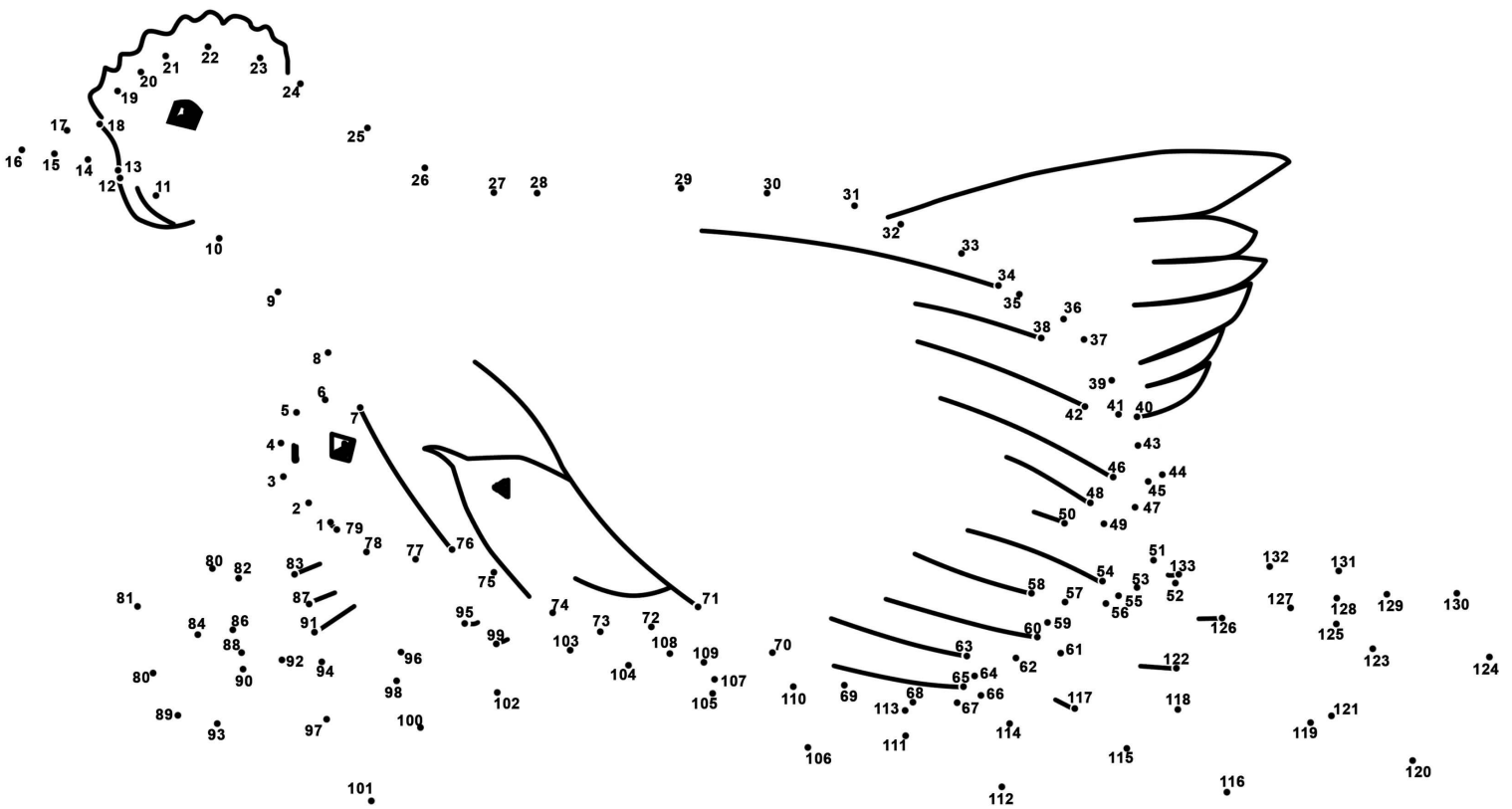
TABLE

CHAIR



## FINISH THE DRAWING BELOW

By connecting the dots below, discover what farm animal is raised all over Michigan and plays an important role in many daily diets.



WHAT ANIMAL AM I?

\_\_\_\_\_

## CAN YOU CRACK IT?

Around 1,200 Michigan dairy farms work together to supply milk to the whole state! Milk can be used in a variety of products such as ice cream, yogurt, and cheese.

Use the 'MOO-ES' Code to discover the answers to each dairy message. Make your own dairy questions or sentences using the 'MOO-ES' Code!

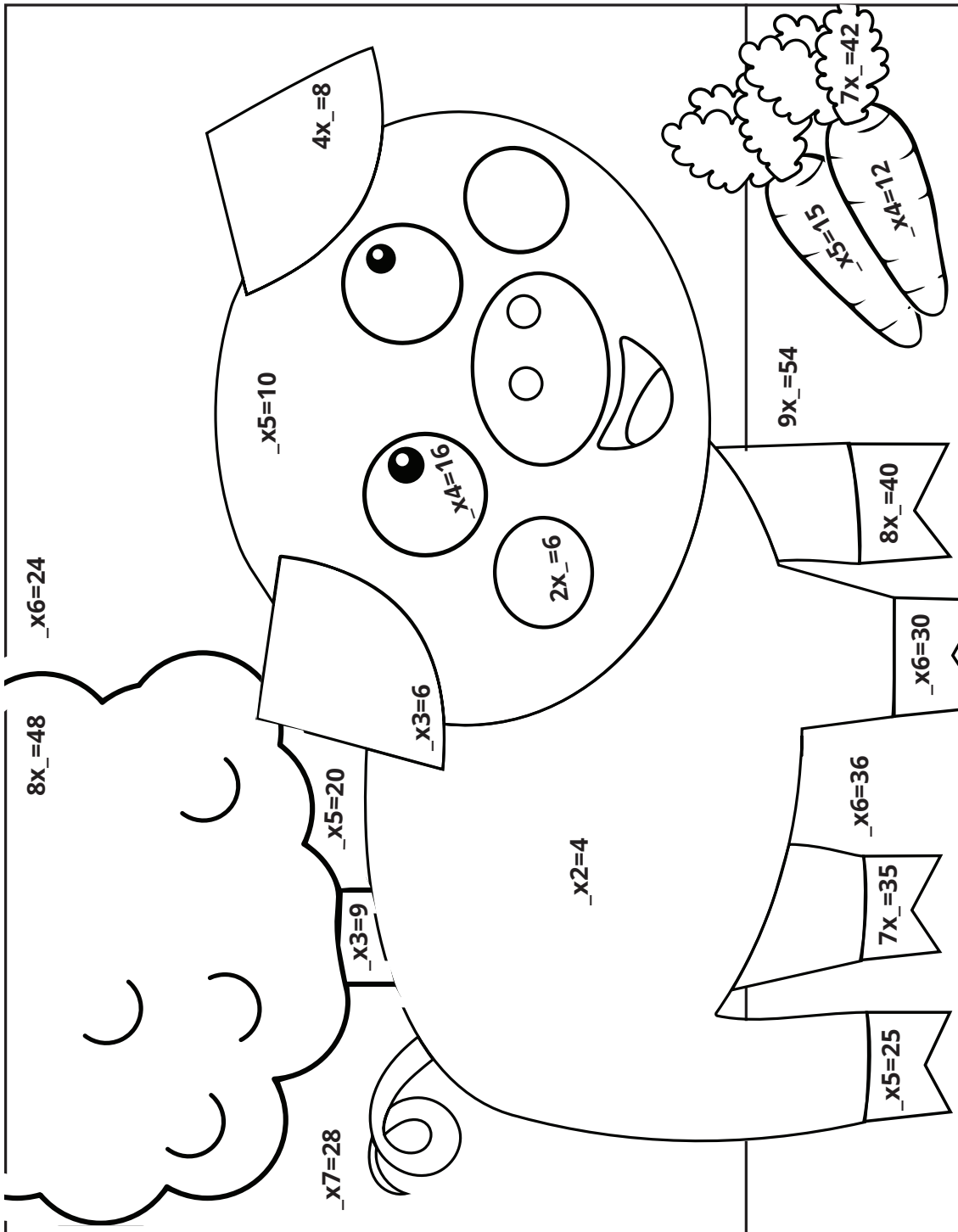


<b>A</b>	•—	What do cows produce?
<b>B</b>	—••	— — •• •—•• —•—
<b>C</b>	—•—•	— — — — — — — —
<b>D</b>	—••	Name the most popular kind of ice cream.
<b>E</b>	•	••— •— —• •• •—•• •—•• •—
<b>F</b>	••—•	— — — — — — — —
<b>G</b>	—•—•	What color is the popular Holstein cow?
<b>H</b>	•••	—••• •—•• •— —•—• —•—
<b>I</b>	••	— — — — — — — —
<b>J</b>	•—•—	•—•• ••• •• — •
<b>K</b>	—•—	— — — — — — — —
<b>L</b>	•—••	What are baby cows called?
<b>M</b>	— —	—•—• •— •—•• ••— • ••
<b>N</b>	—•	— — — — — — — —
<b>O</b>	—•—	What is America's favorite dessert?
<b>P</b>	•—••	•• —•—• • —•—• •—• • •— •— — —
<b>Q</b>	—•—•	— — — — — — — —
<b>R</b>	•—•	What is the slogan used to promote eating dairy products?
<b>S</b>	•••	• ••— • •—• —•—
<b>T</b>	—	—•• •— —•— — — — —
<b>U</b>	•—	— — — — — — — —
<b>V</b>	••—	Name three dairy products used in the dairy slogan.
<b>W</b>	•—•	— — •• •—•• —•—
<b>X</b>	—•—	— — — — — — — —
<b>Y</b>	—•—	—•—• ••• • • •• •
<b>Z</b>	—••	— — — — — — — —



## MATH PROBLEM SOLVER

Michigan is home to about 2,000 pig farms; these farmers make sure their pigs are happy and healthy every day. Use your math skills to solve each equation. Color each section based on the colors in the Color Bank.



### Color Bank

- 2 = PINK
- 3 = ORANGE
- 4 = BLUE
- 5 = PURPLE
- 6 = GREEN

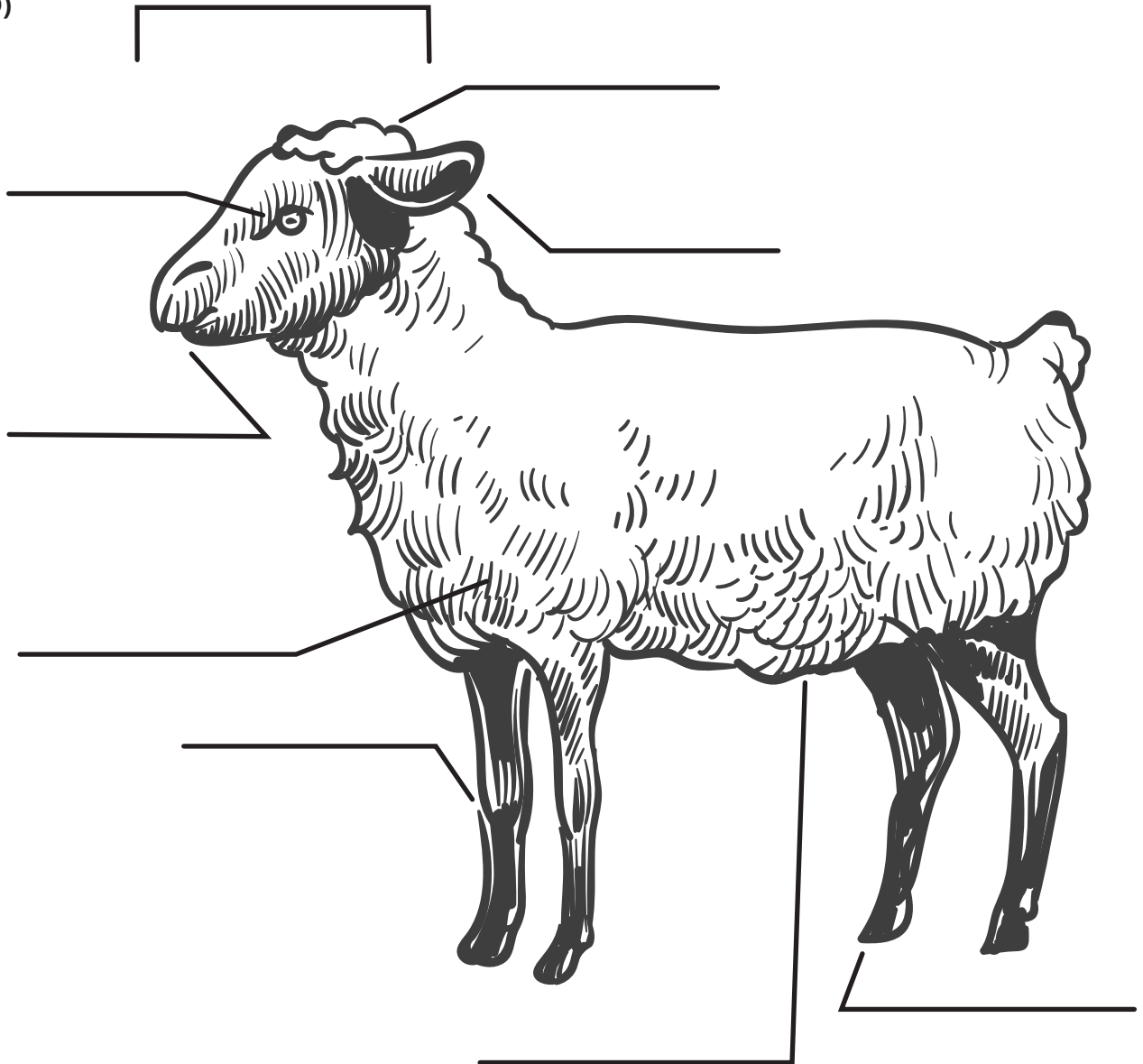
## IDENTIFYING THE PARTS OF A SHEEP!

Some Michigan farmers raise sheep for the wool they produce. Like us, sheep need haircuts too! By shearing the sheeps, the farmer can use the wool for things like clothing!

Can you identify the parts of a baby sheep (a lamb) listed below?

### Word Bank

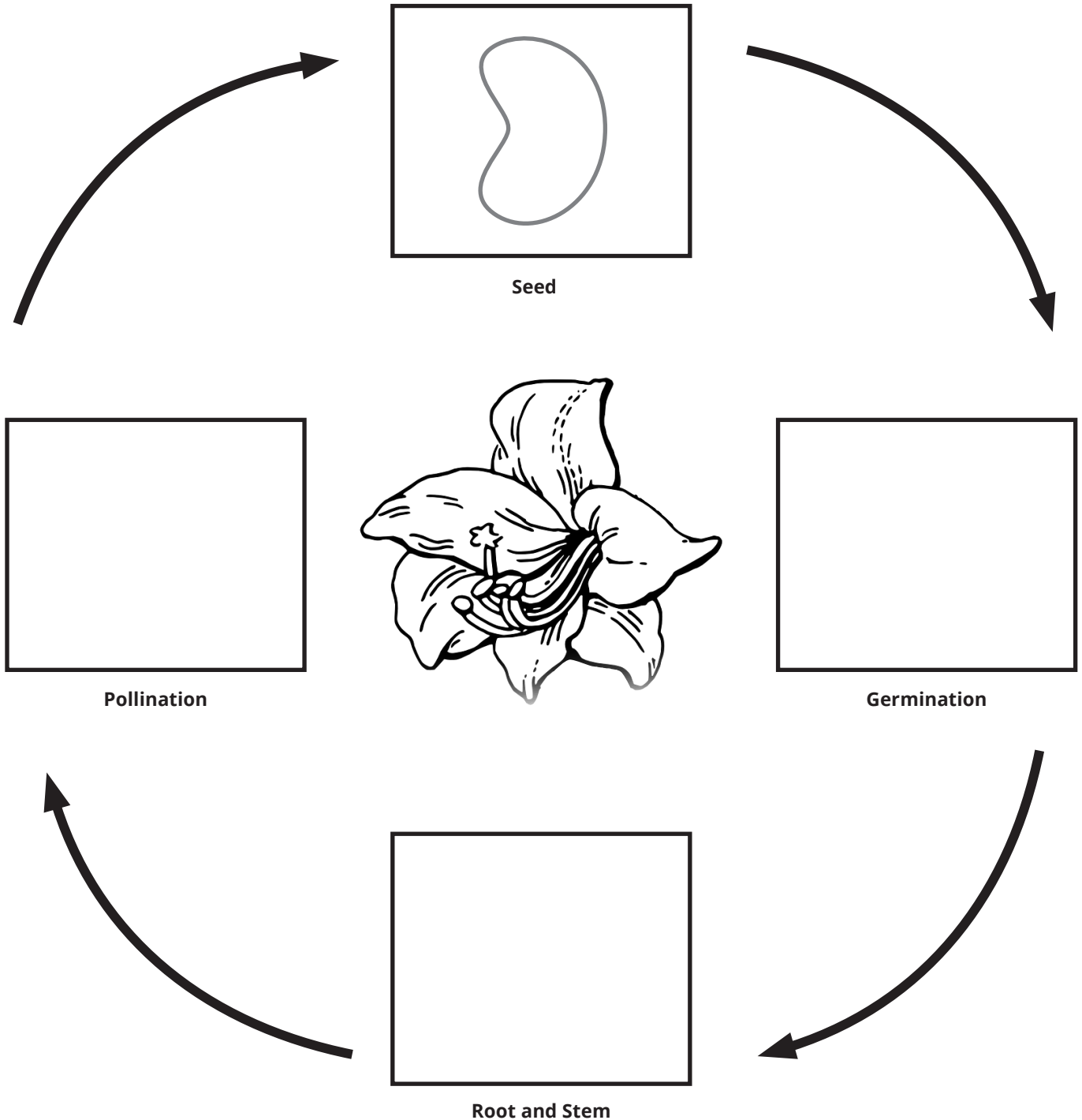
HEAD  
EYES  
EARS  
MUZZLE (NOSE)  
POLL (TOP OF HEAD)  
KNEE  
HOOF  
BELLY  
SHOULDER



## A FLOWER'S LIFE CYCLE!

Michigan farmers raise many kinds of flowers each year! These plants are typically grown in greenhouses with glass walls and a glass roof to keep the inside warm, which means farmers can grow plants all year round!

Draw each step of a flower's life cycle in the boxes below! One step has been done for you.



## CHRISTMAS TREE | SPY

On average it takes Michigan Christmas tree farmers seven years to grow each tree! Michigan is one of the top growers of Christmas trees in the nation.

Can you count how many of each tree is shown below?

