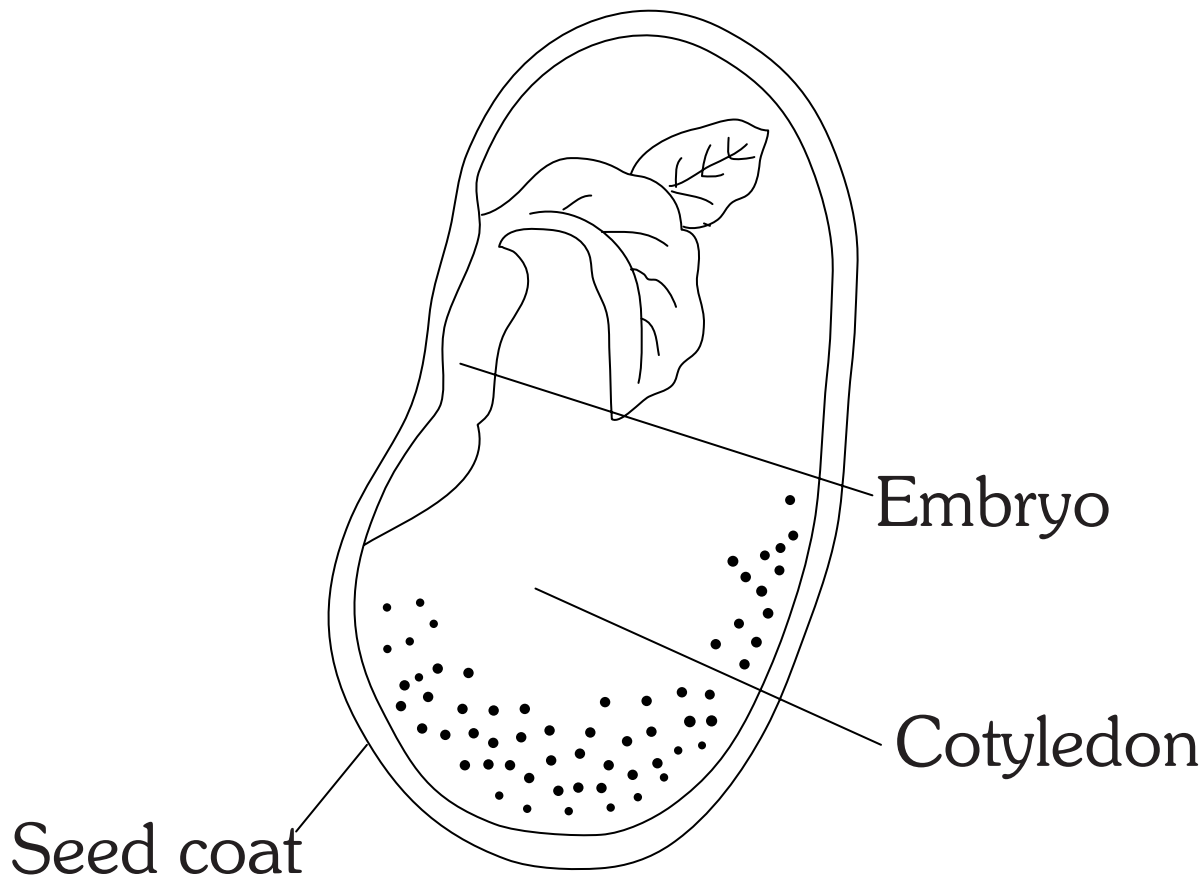


# Bean Seed



This diagram shows the cross section of a bean seed. On the outside of the seed is a **seed coat**. Its purpose is to protect the seed. Inside the seed is the embryo. The **embryo** is the beginning of a new plant. When the seed receives the proper amount of warmth and moisture, it will germinate, which means the embryo will begin to grow into a seedling. The **cotyledons** provide food for the embryo as it grows into a seedling. The leaves will then use the energy from sunlight to carry out photosynthesis, making food for the plant.