

Common Pollinator Descriptions and Picture Guide

The following images serve as a simple guide to the major categories of flower visitors used by the Great Sunflower Project. Photos are licensed under creative commons or for use by USU extension projects.

Bumblebee
(*Bombus*)

Large and hairy all over, black and yellow (can have orange), **triangle shaped head**



© USU Extension



© Kaitlin Campbell



© Andrea Kreuzhage

Carpenter bee
(*Xylocopa*)

Large, chunky, with **shiny black abdomen** (tail end), oval shaped head, can have yellow fur on thorax or be all black (middle)



© PaulS



© Desiree Narango

Western Honeybee
(*Apis mellifera*)

Medium sized, **striped abdomen**, can be orange or black. **Flattened hind legs for carrying pollen balls**, legs dangle when flying around



© USU extension



© Oregon Department of Agriculture



Other bees: Native bees come in **all shapes, colors and sizes**. Bees are fuzzy, round and typically have **pollen collecting hairs on their bodies**. If the bee you see is not one of the ones above, you may have an “other bee”. Examples include sweat bees, mason bees, leafcutter bees, longhorned bees, sunflower bees, digging bees, mining bees, parasitic bees, and many more. A few examples are shown below.



Sweat bee © Kaitlin Campbell



Eucera Longhorned bee © Bryant Olsen



Western leafcutter bee © Bettina Harvey



Sweat bee © USU extension



Digger bee © Kaitlin Campbell



Squash bee © quester

Butterflies Flat wings that open and close like a book. Clubs (balls) on the end of antennae, can come in all colors including white and brown



© USU extension

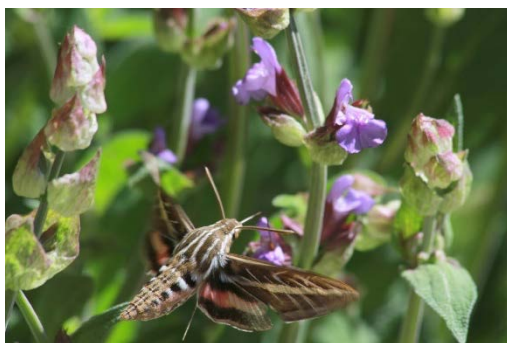


© USU extension



© Kaitlin Campbell

Moths More active at night, brown or gray colored; day active moths can have colorful patterns on wings. **Wings are held flat**, roof-like, and **antennae are often thin**, no club, or hook.



© USU extension



© Kaitlin Campbell



© Seabrooke Leckie

Wasps	Yellow, black, brown. Slender and streamlined, pointed tails, less hairy , often with longer antennae than bees.
--------------	---



© Judy Gallagher



© USU extension



© USU extension

Beetles	Variable. Hardened wing covers (elytra) shield hind wings and form a line down the back where they meet. Most common beetles on flowers are Flower scarabs, Lady beetles, Wedge shaped beetles, Tumbling flower beetles, and soldier beetles.
----------------	---



Flower Scarab © USU extension



Soldier beetle © Katja Schulz



Lady beetle © USU extension

Flies	Not hairy and eyes are very large covering most of their head. Flies only have 2 wings , while bees and wasps have 4. The most common flies on flowers are hoverflies. They look waspish because they have yellow and black stripes, but they are small and fly very quickly.
--------------	---



© USU extension



© Josh Vandermeulen