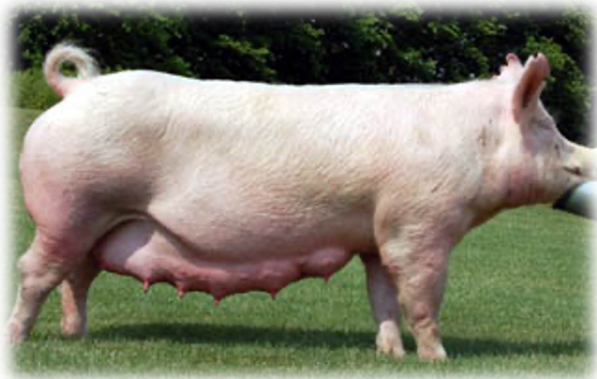


**Cow**



**Sow**



**Hen**



**Hen**



**Cow**



**Ewe**



A female pig is called a sow. A sow is pregnant for 3 months, 3 weeks, and 3 days before she gives birth to her piglets.

Female cattle are called cows. A cow is pregnant for about 9 months before she gives birth to a calf.

A female chicken is called a hen. A hen lays eggs. 21 days after the eggs are laid they hatch. A newly hatched chicken is called a chick.

A female turkey is called a hen. A hen lays eggs. 28 days after the eggs are laid they hatch. A newly hatched turkey is called a poult.

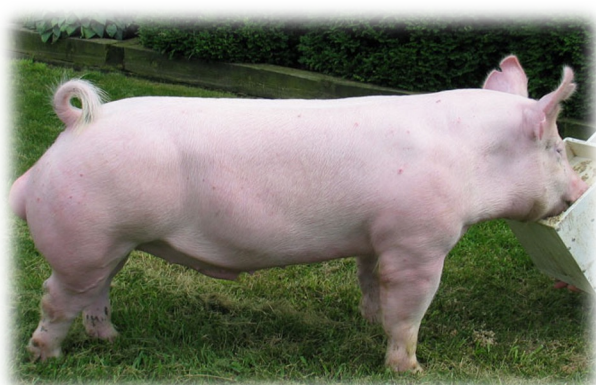
A female sheep is called a ewe. A ewe is pregnant for about 5 months before she gives birth to 1-3 lambs.

Female cattle are called cows. A cow is pregnant for about 9 months before she gives birth to a calf.

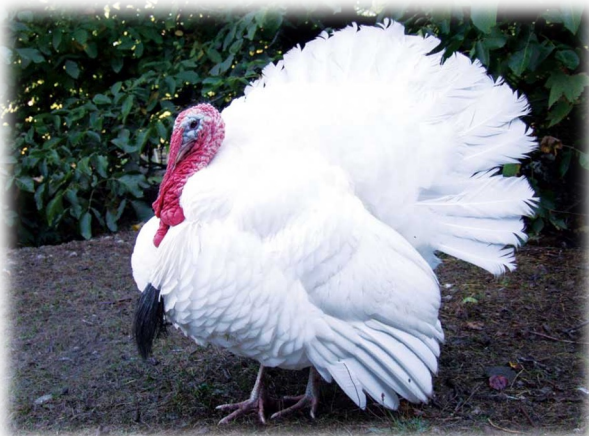
# Bull



# Boar



# Tom



# Rooster



# Bull



# Ram



A male pig is called a boar.

Pigs eat a grain mixture of ground corn and soybean meal.

Male cattle are called bulls.

Cattle eat grass, hay, and grains such as corn or ground soybeans.

A male chicken is called a rooster.

Chickens eat a grain mixture of soybeans and corn.

A male turkey is called a tom.

Turkeys eat a grain mixture of soybeans and corn.

A male sheep is called a ram.

Sheep eat grass, hay, and grains such as corn and oats.

Male cattle are called bulls.

Cattle eat grass, hay, and grains such as corn or ground soybeans.

# Calf



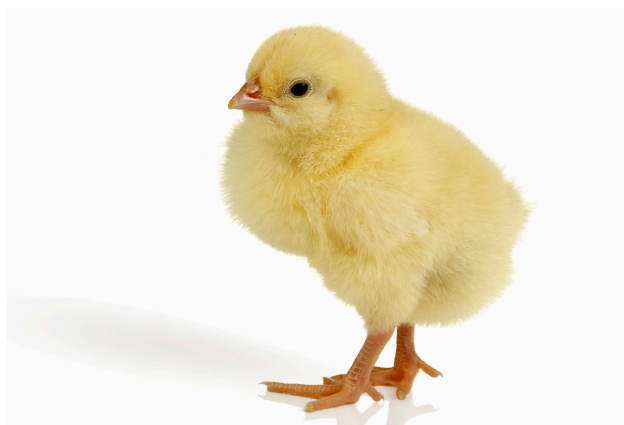
# Piglet



# Poult



# Chick



# Calf



# Lamb



A newborn pig is called a piglet. They weigh about 3 pounds when they are born. Piglets are born in a litter of 8-12 other newborn pigs.

Newborn cattle are called calves. Calves weigh between 75 and 100 pounds when they are born.

A newly hatched chicken is called a chick. Each chick uses its beak to break out of its eggshell.

A newly hatched turkey is called a poult. Turkey farmers provide shelter for poults to protect them from predators and the weather.

A newborn sheep is called a lamb. A female sheep can have a single lamb, twins, or triplets.

Newborn cattle are called calves. Calves weigh between 75 and 100 pounds when they are born.