

## LIFE CYCLE OF A STABLE FLY

### STAGE 1 - EGG

A female lays 25-50 eggs. Eggs hatch in 1-4 days.

### STAGE 2 - LARVA

The larva eat decaying material and stay in this stage from 6-30 days.

### STAGE 3 - PUPA

12-16 days  
(non-feeding stage)

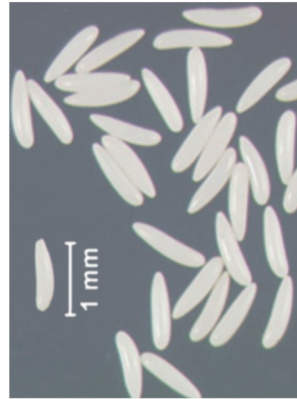
### STAGE 4 - ADULT

An adult lives about 2-3 days and feeds on blood.

Total Life Span: 23-52 days



© Håkon Haraldsetide



## LIFE CYCLE OF A MOSQUITO

### STAGE 1 - EGG

A female lays a raft of 40-400 eggs in water.  
The eggs hatch in 7 days.

### STAGE 2 - LARVA

The larva live in water  
for four molts and eat organic matter.

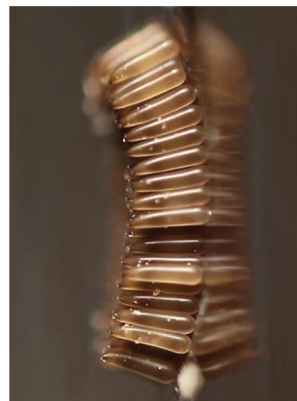
### STAGE 3 - PUPA

2 days  
(non-feeding stage)

### STAGE 4 - ADULT

An adult lives about 1 week and feeds on blood.

Total Life Span: 14-30 days



# LIFE CYCLE OF A CHICKEN

## STAGE 1 - MATING

Male: Rooster // Female: Hen

A hen will start laying eggs at the age of 5 months.

## STAGE 2 - GESTATION

21 days

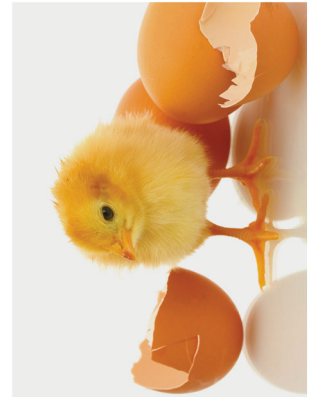
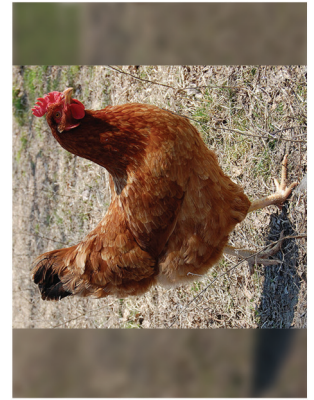
## STAGE 3 - JUVENILE

Baby: Chick

The chick forges for food about 1-2 hours after hatching.

## STAGE 4 - ADULT

Total Life Span: 8-10 years



# LIFE CYCLE OF A DOG

## STAGE 1 - MATING

A female mates at 1 year of age.

## STAGE 2 - GESTATION

2 months

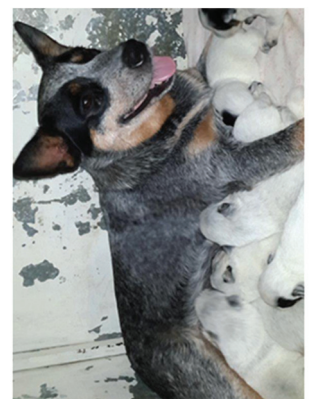
## STAGE 3 - JUVENILE

Baby: Puppy

The puppy drinks its mother's milk for about 4 weeks.

## STAGE 4 - ADULT

Total Life Span: 12 years



# LIFE CYCLE OF A COW

## STAGE 1 - MATING

Male: Bull // Female: Cow

A cow mates at 3 years of age.

## STAGE 2 - GESTATION

9½ months

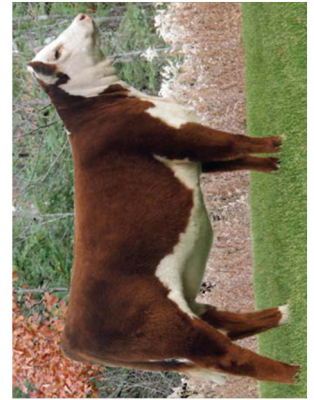
## STAGE 3 - JUVENILE

Baby: Calf

The calf drinks its mother's milk for about 2 months.

## STAGE 4 - ADULT

Total Life Span: 15 years



# LIFE CYCLE OF A HORSE

## STAGE 1 - MATING

Male: Stallion // Female: Mare

A mare mates at 3 years of age.

## STAGE 2 - GESTATION

1 year

## STAGE 3 - JUVENILE

Baby: Foal

The foal drinks its mother's milk for about 1 year.

## STAGE 4 - ADULT

Total Life Span: 25-30 years

