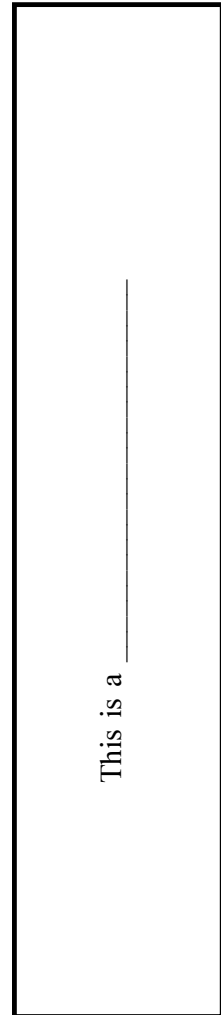
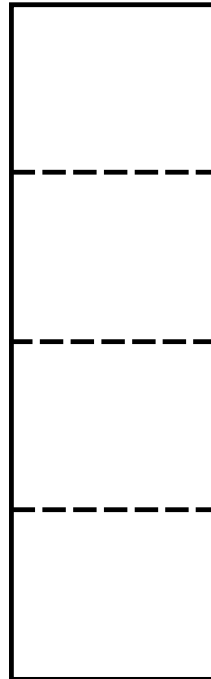
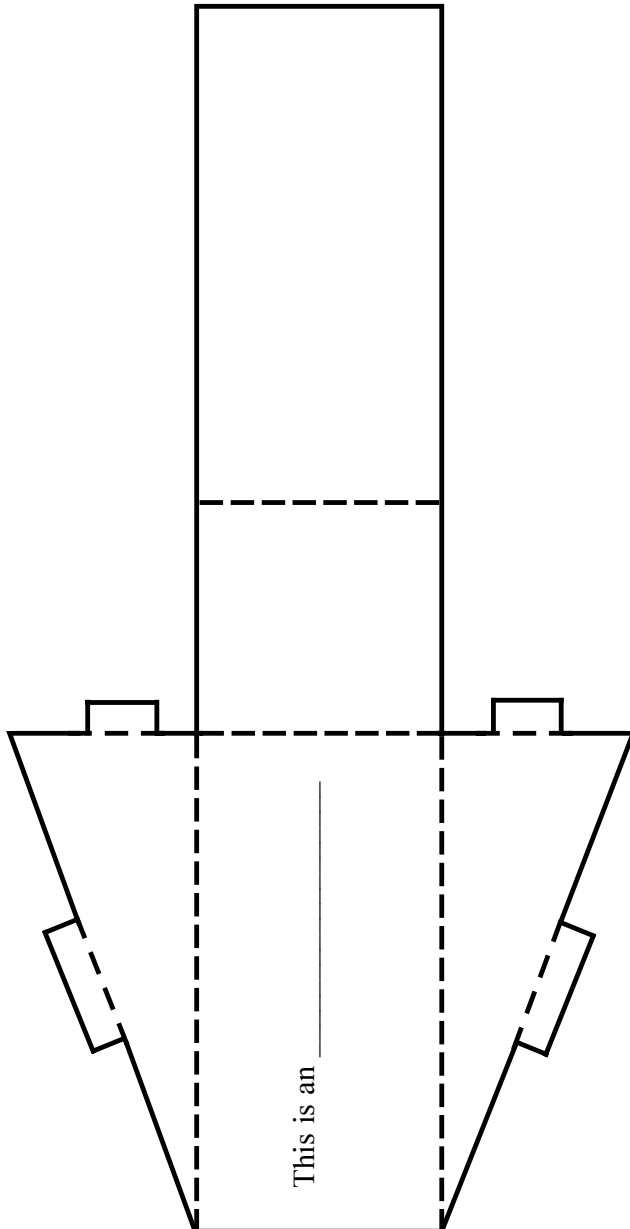
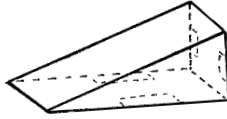


Inclined Plane and Lever

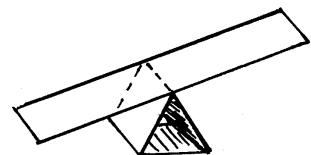
Inclined Plane

- Cut on solid lines.
- Fold on dotted lines.
- Use glue or tape to hold tabs in place.



Lever

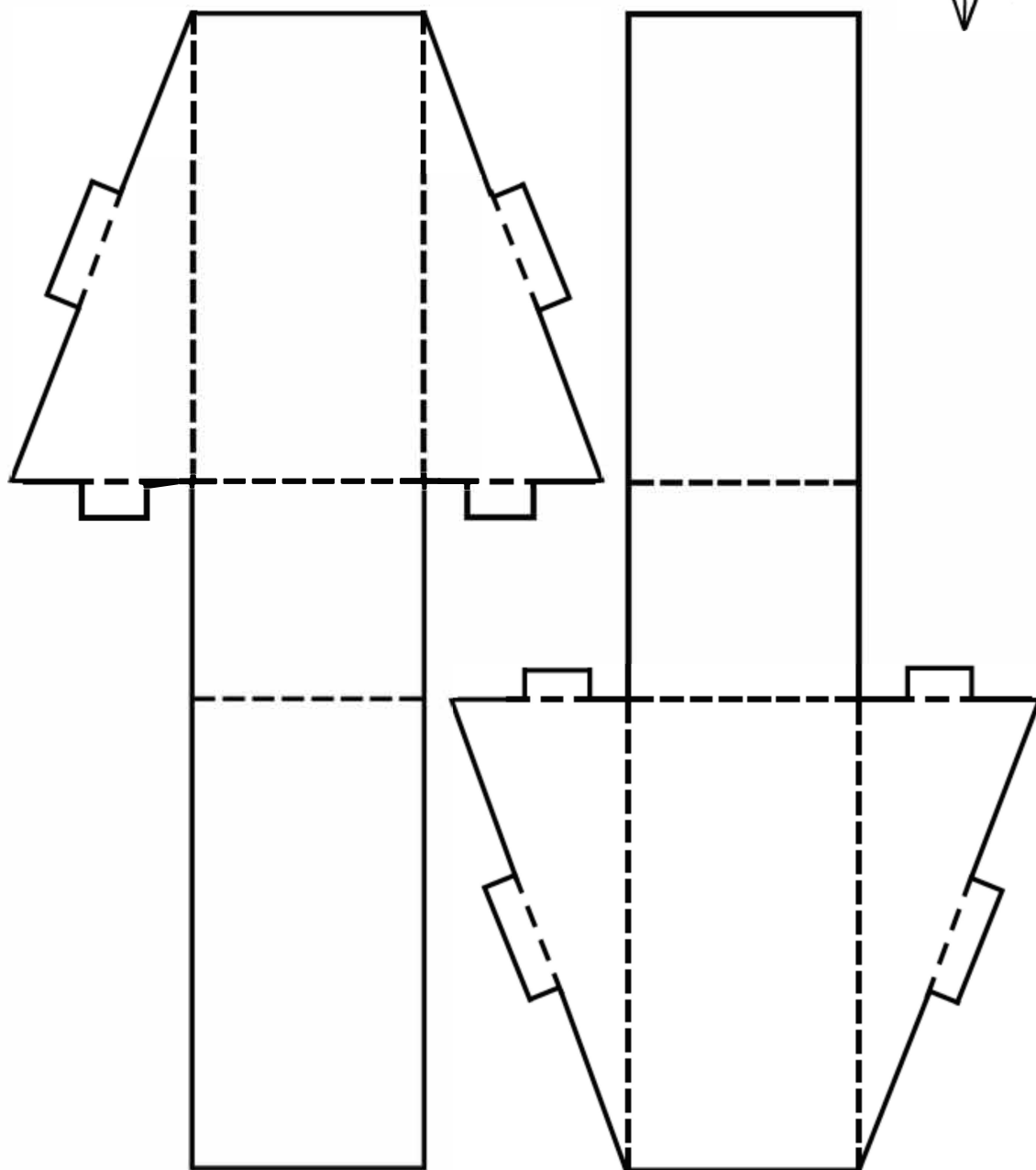
- Cut on solid lines.
- Fold on dotted lines.
- Tape to hold.



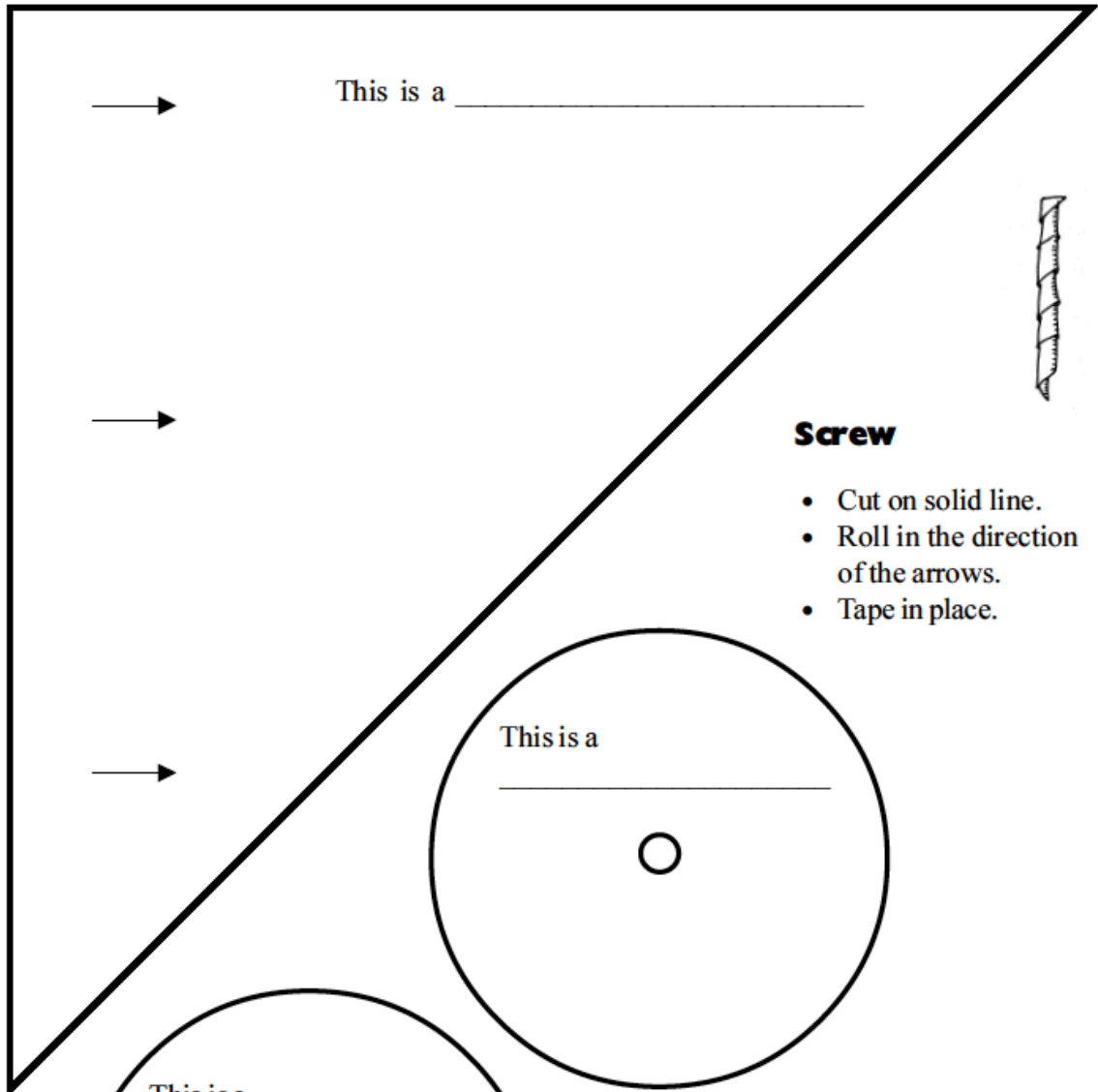
Wedge

Wedge

- Cut on solid lines.
- Fold on dotted lines.
- Glue or tape tabs in place.
- Glue or tape the two pieces together.



Screw, Wheel and Axle



Screw

- Cut on solid line.
- Roll in the direction of the arrows.
- Tape in place.

Wheel and Axle

- Cut the wheels out making the center holes just large enough to insert a straw.
- Insert a straw through both holes.
- Tape wheels to straw, if needed.