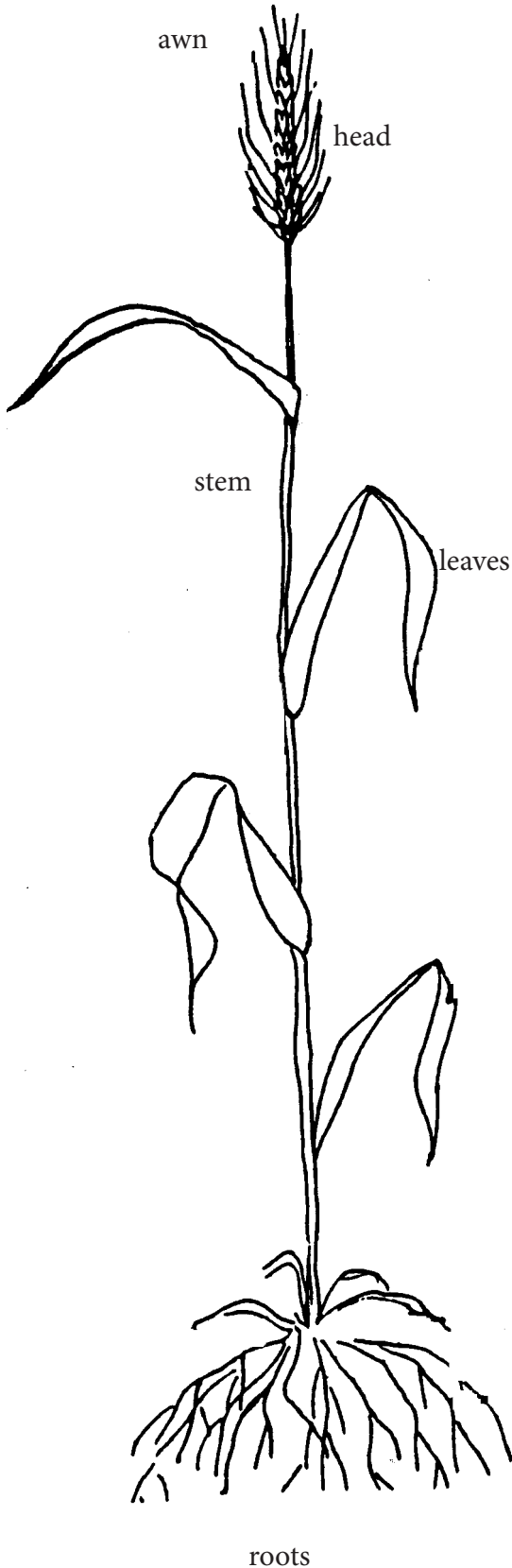


Anatomy of a Wheat Plant



The wheat plant has four basic parts: the head, stem, leaves and roots. Wheat plants grow to be about 2-4 feet tall.

The **awn** is a slender, bristle-like attachment of a wheat plant, such as those found at the tips of the spikelets in many grasses.

The **head** contains kernels or the wheat seeds.

The **stem** supports the head and helps transport nutrients and water throughout the plant.

The **leaves** are responsible for photosynthesis, the process in which green plants produce simple carbohydrates by using carbon dioxide, hydrogen and a light source, usually the sun.

The **roots** anchor the plant in the soil and absorb water and nutrients from the soil and transport them to the stem.