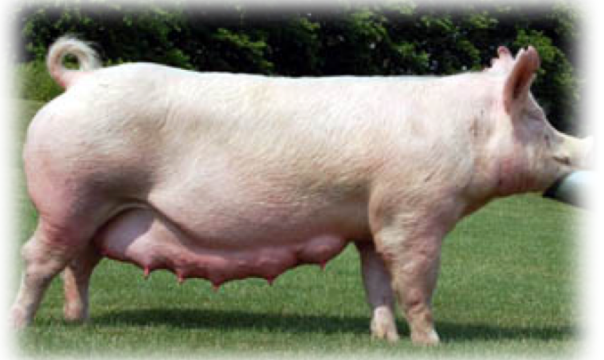


Mare



Sow



Hen



Hen



Cow



Ewe



A mother horse is called a mare. A mare is pregnant for about 11 months before she gives birth to a foal.

A mother pig is called a sow. A sow is pregnant for 3 months, 3 weeks, and 3 days before she gives birth to her piglets.

A mother turkey is called a hen. A hen lays eggs. 28 days after the eggs are laid they hatch. A baby turkey is called a poult.

A mother chicken is called a hen. A hen lays eggs. 21 days after the eggs are laid they hatch. A baby chicken is called a chick.

Female (mother) cattle are called cows. A cow is pregnant for about 9 months before she gives birth a calf.

A mother sheep is called a ewe. A ewe is pregnant for about 5 months before she gives birth to 1-3 lambs.

Stallion



Boar



Tom



Rooster



Bull



Ram



A male (father) horse
is called a stallion.

Horses eat hay, grass,
and grain.

A male (father) pig is
called a boar.

Pigs eat a grain
mixture of ground
corn and soybean
meal.

A male (father)
turkey is called a tom.

Turkeys eat a grain
mixture of soybeans
and corn.

A male (father)
chicken is called a
rooster.

Chickens eat a grain
mixture of soybeans
and corn.

Male (father) cattle
are called bulls.

Cattle eat grass, hay,
and grains such as
corn or ground
soybeans.

A male (father) sheep
is called a ram.

Sheep eat grass, hay,
and grains such as
corn and oats.

Foal



Piglet



Poult



Chick



Calf



Lamb



A newborn horse is called a foal. A foal that is a girl is called a filly. A foal that is a boy is called a colt.

A baby pig is called a piglet. They weigh about 3 pounds when they are born. Piglets are born in a litter of 8-12 other baby pigs.

A newborn turkey is called a poult. Turkey farmers provide shelter for poults to protect them from predators and the weather.

A newborn chicken is called a chick. Each chick uses its beak to break out of its eggshell.

Baby cattle are called a calf. Calves weigh between 75 and 100 pounds when they are born.

A newborn sheep is called a lamb. A mother sheep can have a single lamb, twins, or triplets.