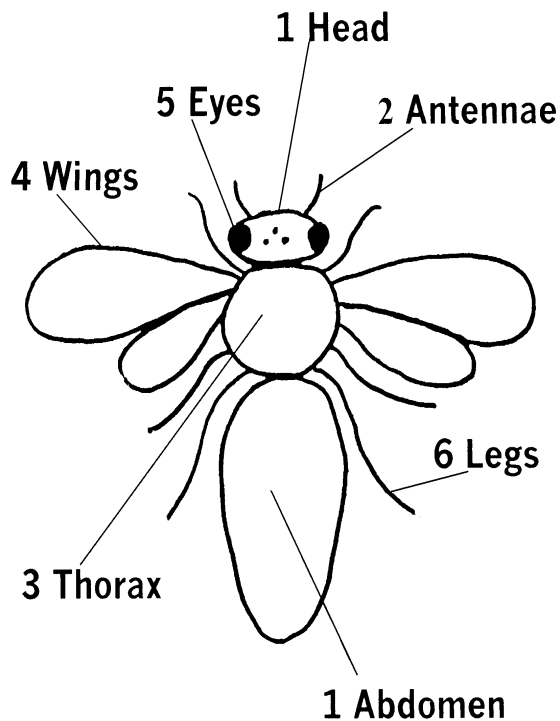


# Beebuzz

This is a game in which you take turns with your friends to throw a die and draw a bee on a piece of paper. Any number can play. To play, you need only these instructions, a piece of paper, a pencil, and a six-sided die. The winner is the one who first completes the drawing of the bee.

To play, throw the die in turn. Each person gets one throw per turn. Depending on the number rolled, you may get to draw a part of the bee. The list next to the picture of the bee tells you what to draw based on the number rolled. To start the drawing, you must roll a "3" because whoever rolls this number gets to draw the thorax. All the other parts of a bee come off the thorax.

If you roll a number for a part that is already drawn, then you do not draw anything. You must wait until your turn comes around again to throw the die. Maybe you will be luckier next time.



- The first "3" rolled gets to start the bee by drawing the thorax.
- The first "1" draws either the head or the abdomen.
- The second "1" draws whichever is missing, the head or abdomen.
- For a "2" draw the two antennae, but only if you have drawn the head. If there is no head yet, pass the die to the next player.
- For a "4" draw the four wings.
- For a "5" draw the 2 big eyes on the side of the head and the 3 little eyes on top of the head (only if you have drawn the head).
- For a "6" draw the 6 legs.