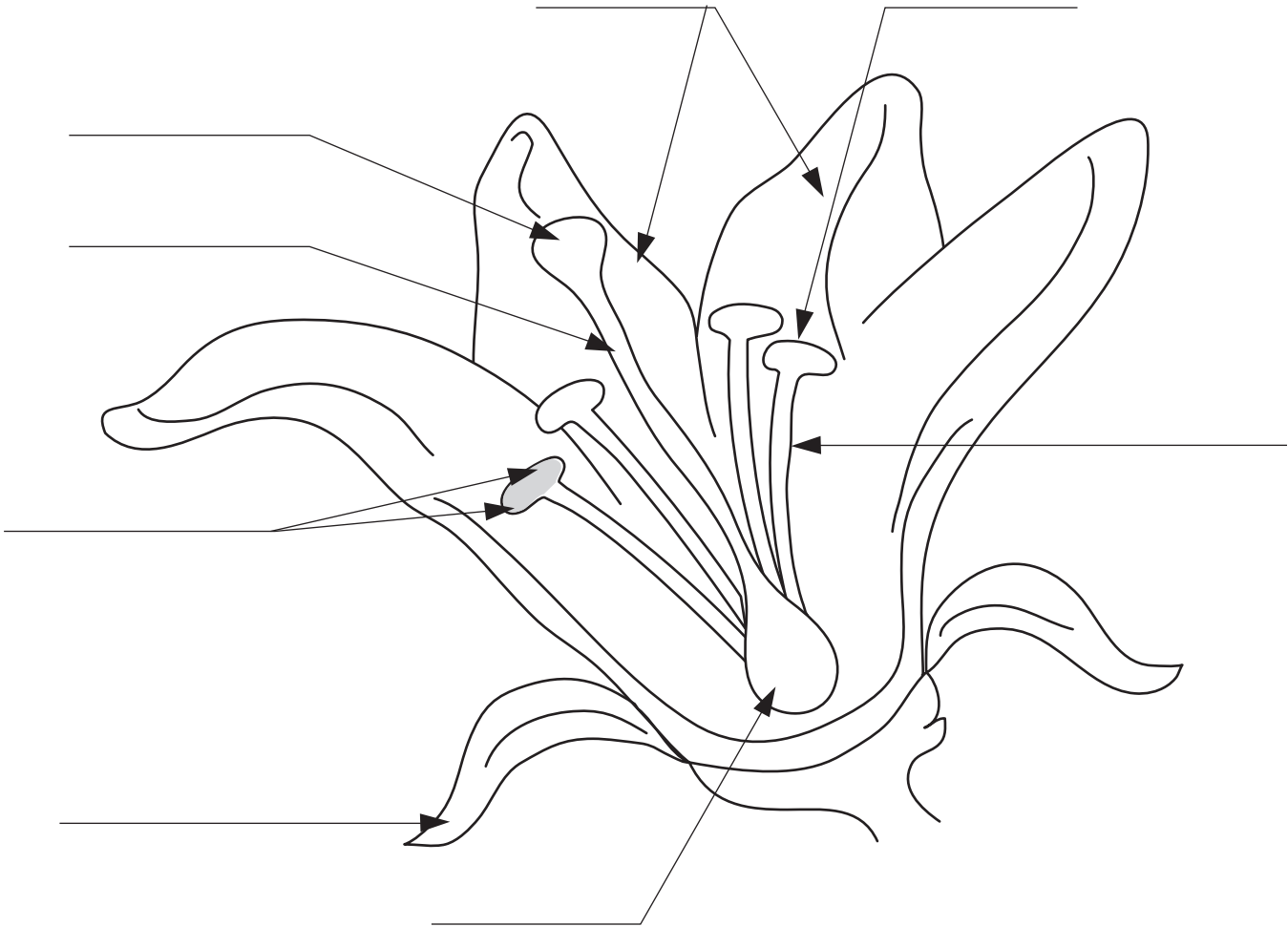


Flower Power

Using the "Glossary of Flower Parts," label the parts of the flower below.



Glossary of Flower Parts:

Petals -- the colorful, thin structures that surround the pollination parts of the flower

Sepal -- commonly green, leaflike structures that protect the bud prior to opening

Anther -- the bright sac that produces and contains the pollen grains

Filament -- the stalk that supports the anther

Pollen grains -- the powdery particles that contain the male portions of the flower; also a nutritious, protein-rich food for bees

Stigma -- sticky surface where the pollen lands and eventually travels down toward the ovary

Style -- the narrow region of the pistil between the stigma and the ovary

Ovary -- the base of the female portion of the flower containing the seeds

The **Stamen** or male part of the flower includes the anther and filament.

The **Pistil** or female part of the flower includes the stigma, style, and ovary.