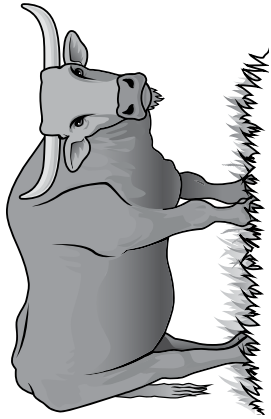


Cattle Call

Name: _____

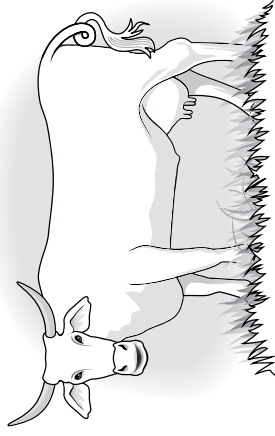


Bull (male)

Hide: Purple (pp)
 Eye: Red (Rg)
 Horn: Long Horns (LL)
 Tail: Straight (Sc)

Cow (female)

Hide: Orange (Op)
 Eye: Red (Rg)
 Horn: Long Horns (LL)
 Tail: Curly (cc)



Directions: As an animal geneticist, predict the traits of a calf produced by a bull and a cow. Using a Punnett square will help you determine what the calf will look like. Use the traits given for the bull to fill in the top of the square and the traits given for the cow to fill in the side. Once the squares are complete, roll a die to represent chance. If you roll a one, select the top left square. If you roll a two, select the top right square. If you roll a three, select the bottom right square. If you roll a four, select the bottom left square. If you roll a five or a six, roll again. Circle the corner of each Punnett square that is selected by chance.

Calf's hide color: Dominant orange or recessive purple

	BULL	
COW		

Probability of orange hide: _____ out of _____
 Probability of purple hide: _____ out of _____

Calf's eye color: Dominant red or recessive green

	BULL	
COW		

Probability of red eyes: _____ out of _____
 Probability of green eyes: _____ out of _____

Calf's horns: Dominant long horns or recessive no horns

	BULL	
COW		

Probability of long horns: _____ out of _____
 Probability of no horns: _____ out of _____

Calf's tail: Dominant straight or recessive curly

	BULL	
COW		

Probability of a straight tail: _____ out of _____
 Probability of a curly tail: _____ out of _____

Cattle Call *(continued)*

Add the calf's inherited traits to the illustration below.

