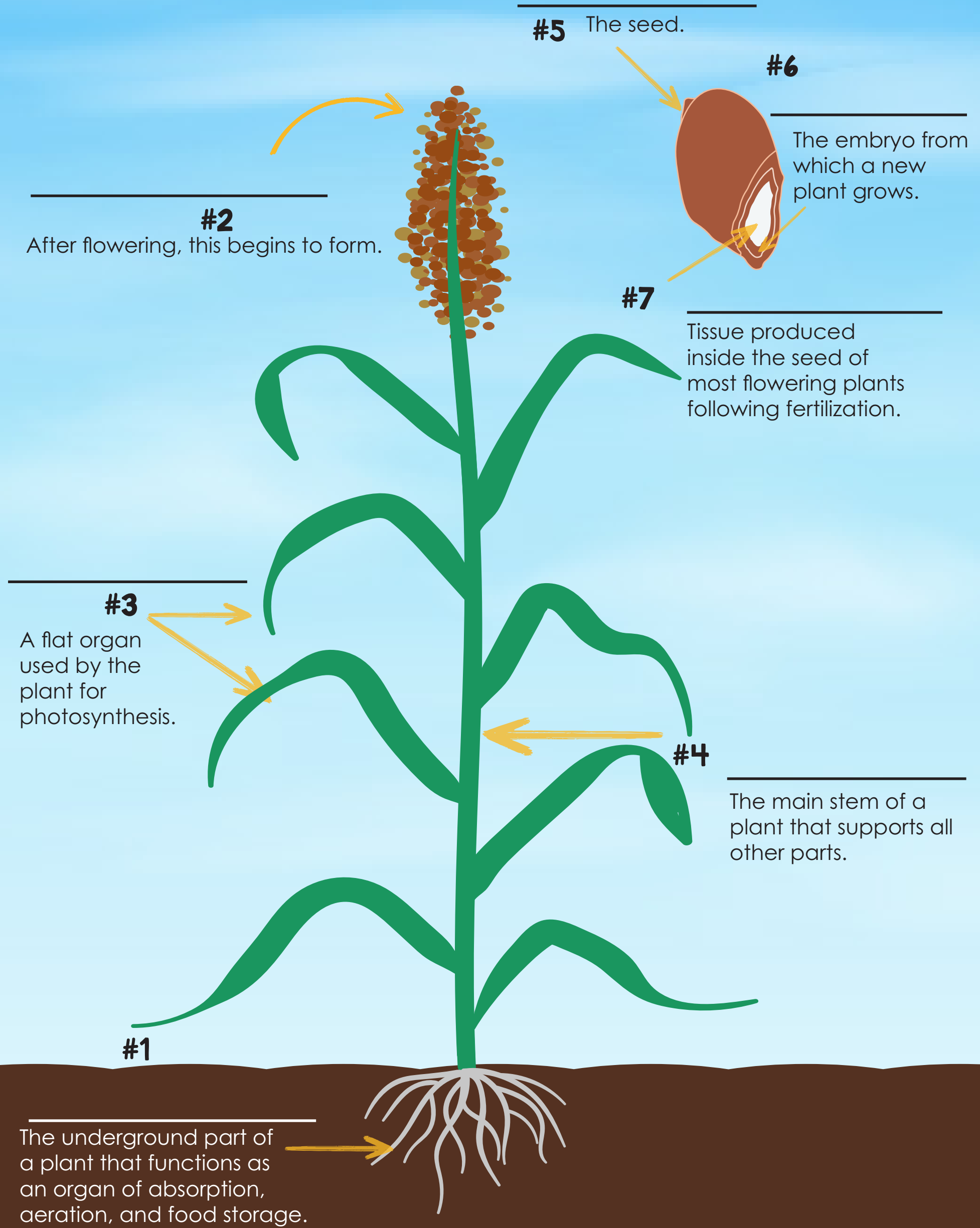
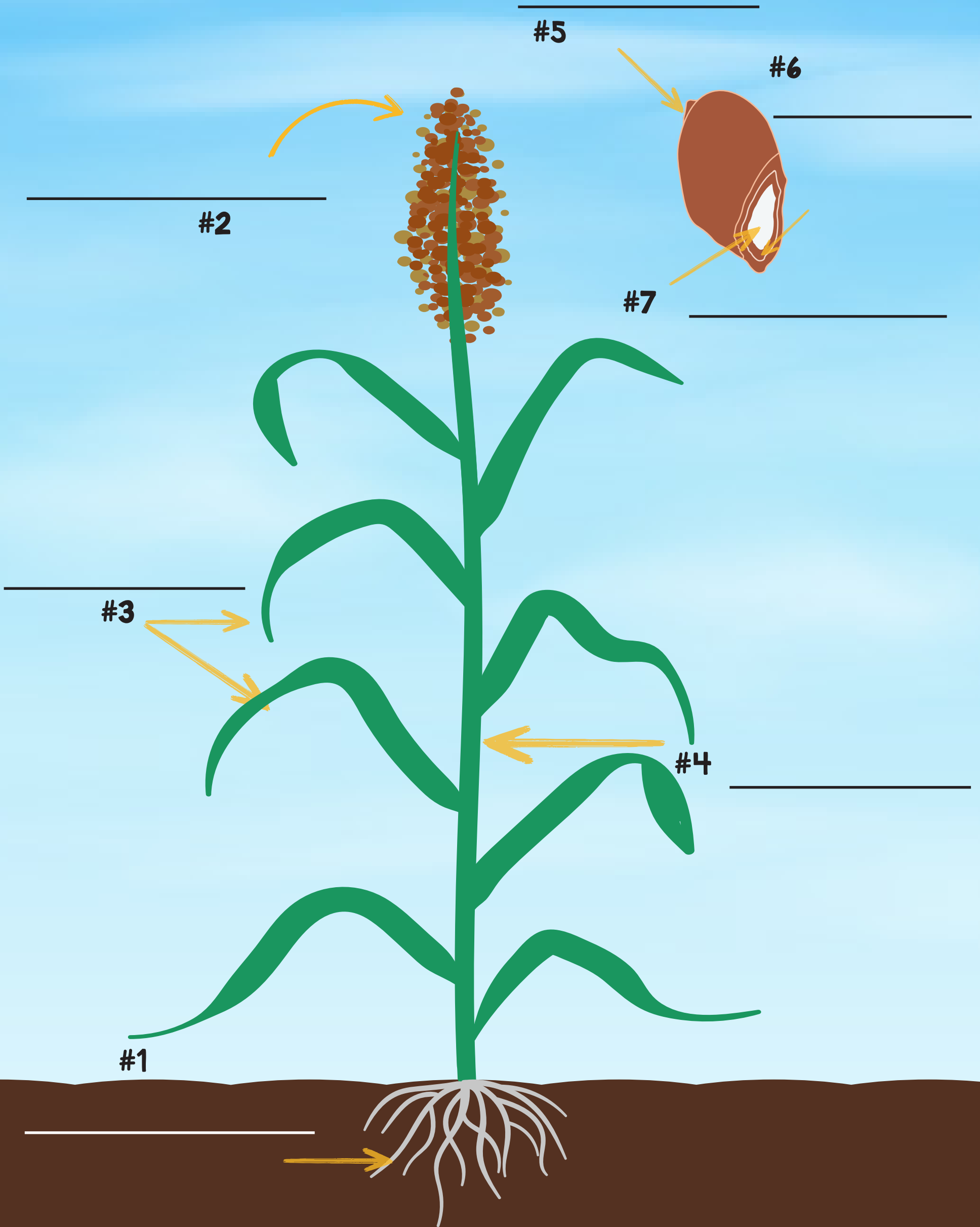


Label the parts of the sorghum plant!



Label the parts of the sorghum plant!



WORD BANK

kernel

The seed.

roots

The embryo from which a new plant grows.

germ

endosperm

Tissue produced inside the seed of most flowering plants following fertilization.

grain head

leaves

stalk

A flat organ used by the plant for photosynthesis.

The main stem of a plant that supports all other parts.

The underground part of a plant that functions as an organ of absorption, aeration, and food storage.

After flowering, this begins to form.