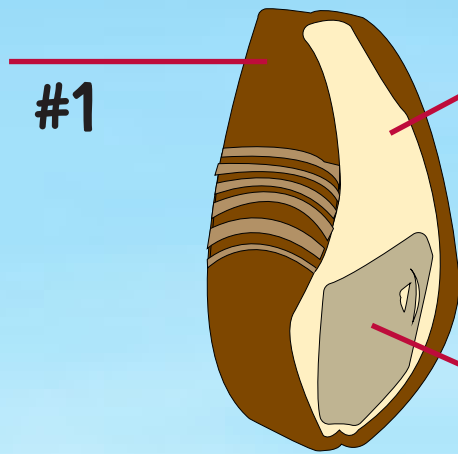


# Label the parts of the seeds!

## Wheat - Monocot

The outer skin, or pericarp, is the protective covering, or seed coat, that surrounds the entire seed. It makes up about 14 percent of the whole grain.

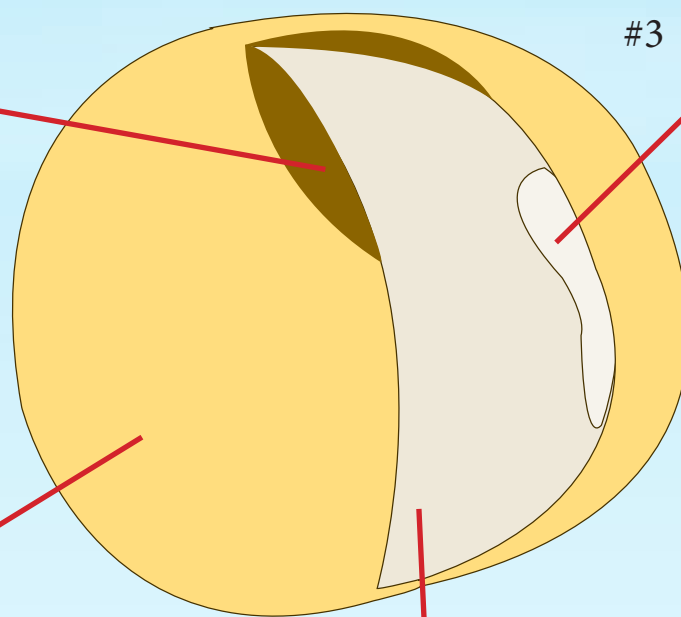


#2 This is the food source for the embryo, and the source of carbohydrates or energy when consumed. The largest part of the kernel, it is the source of white flour.

#3 This is the embryo or “beginning of” a new plant which sprouts upon germination. It is the only living part of the seed.

## Soybean - Dicot

#1 The brown spot on the seed that shows where the seed was attached to the pod.



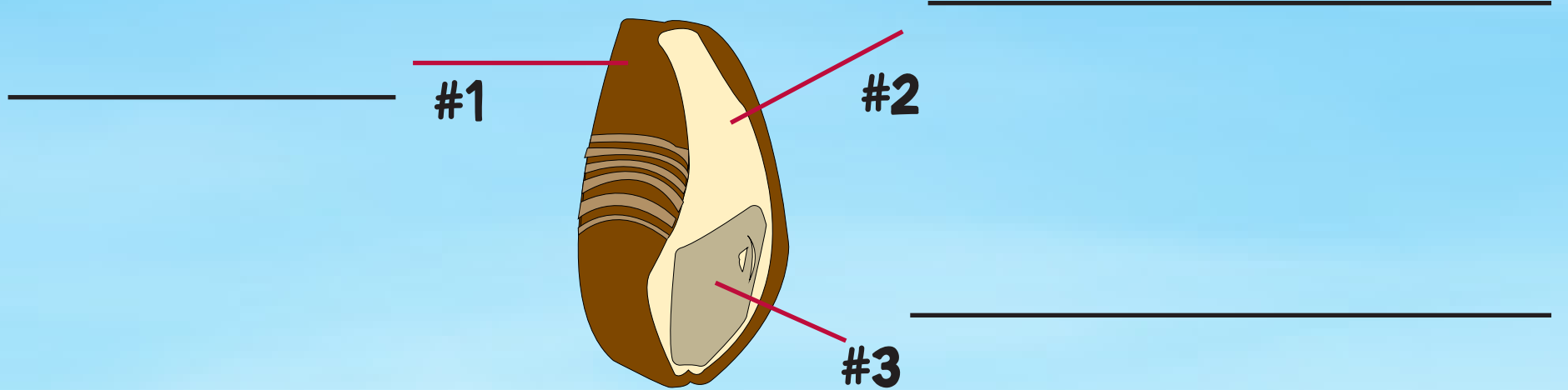
#3 The part of a seed that develops into a new plant, through germination, including the stem, leaves and roots.

#2 The outside hard cover that protects the seed.

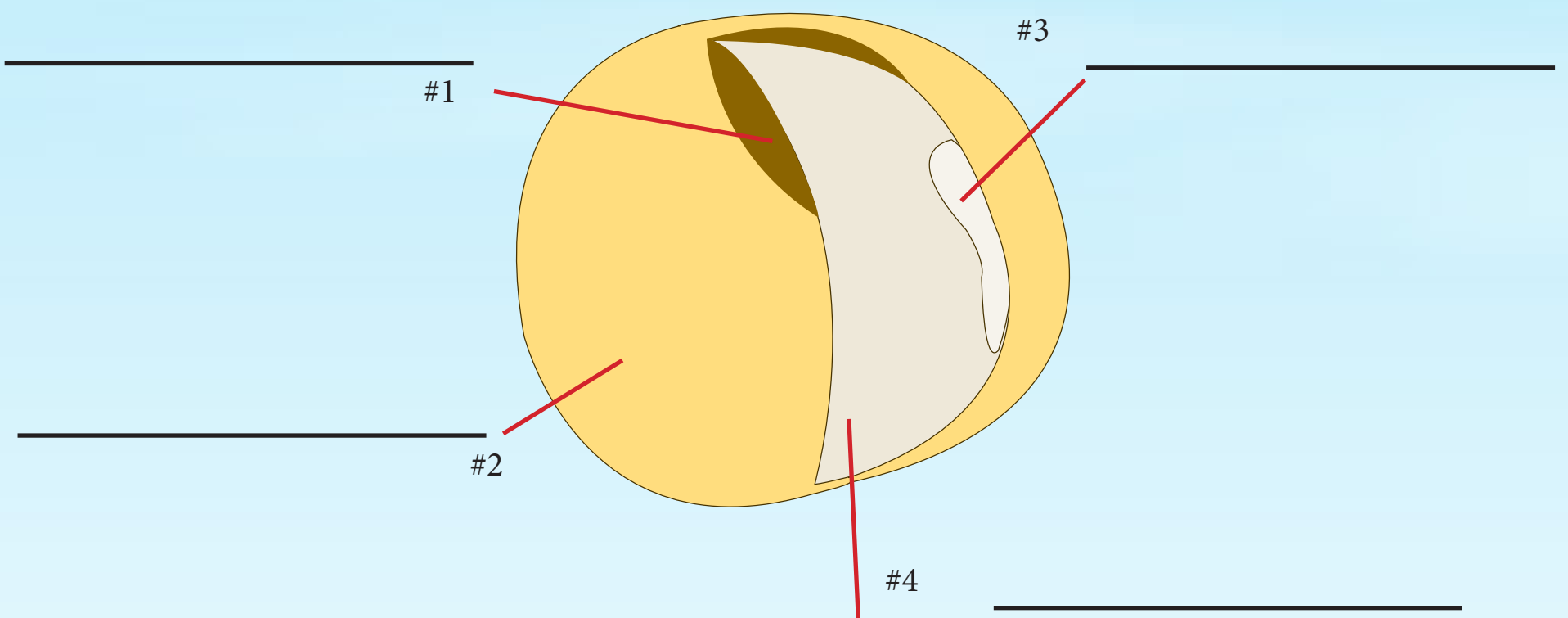
#4 This is the part of the seed that stores food that will be used until the plant develops its leaves and stems above ground. Since it has a pair of first leaves the soybean plant is known as a dicot.

# Label the parts of the seeds!

## Wheat - Monocot



## Soybean - Dicot



# WORD BANK

**Cotyledon**

This is the food source for the embryo, and the source of carbohydrates or energy when consumed. The largest part of the kernel, it is the source of white flour.

**Embryo**

This is the embryo or “beginning of” a new plant which sprouts upon germination. It is the only living part of the seed.

**Seed Coat**

**Hilum**

The outer skin, or pericarp, is the protective covering, or seed coat, that surrounds the entire seed. It makes up about 14 percent of the whole grain.

**Bran**

**Endosperm**

This is the part of the seed that stores food that will be used until the plant develops its leaves and stems above ground. Since it has a pair of first leaves the soybean plant is known as a dicot.

**Germ**

The part of a seed that develops into a new plant, through germination, including the stem, leaves and roots.

The brown spot on the seed that shows where the seed was attached to the pod.

The outside hard cover that protects the seed.