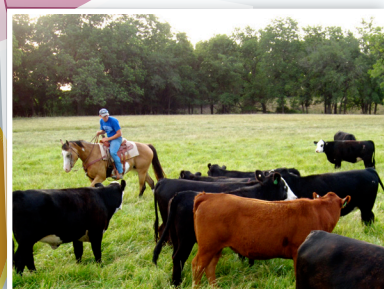
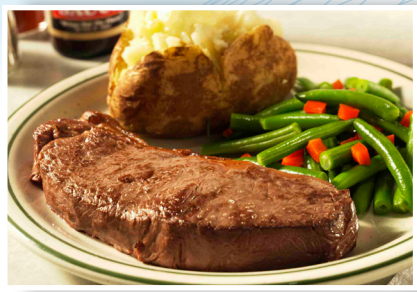


From Pasture to Plate



Kansas Foundation
for **AGRICULTURE**
IN THE CLASSROOM



- **Cow-calf:** Beef cows produce calves that are born and raised on cow-calf farms and ranches. These cattle spend time grazing on grass pastures.
- **Weaning:** Calves are separated from their mothers between 6 and 8 months of age.
- **Livestock Auction Markets:** After weaning, many calves leave the farm or ranch where they were born to be sold at livestock auction markets at 6 and 12 months of age.
- **Stocker and Backgrounders:** Between 6 and 12 months of age, cattle spend time grazing pastures. Here, they gain weight and convert forage and grass into lean protein.
- **Feedyard:** Cattle spend 4 to 6 months at a feedyard being fed a balanced diet of grain and roughage (hay). Cowboys, veterinarians and nutritionists watch them with a careful eye.
- **Packing Plant:** Cattle are sent to a packer/processing facility to be harvested and processed.
- **Grocery Store:** The store displays and offers packages of meat to consumers.
- **Plate:** Consumers prepare and enjoy eating meat as part of a healthy diet!

From Pasture to Plate



Kansas Foundation
for **AGRICULTURE**
IN THE CLASSROOM



Cow-Calf

Plate



Weaning

Packing Plant

Livestock Market Auctions

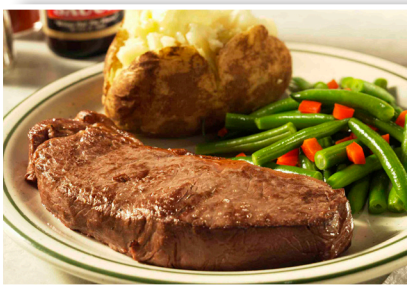


Feedyard

Stockers & Backgrounders



Grocery Store



After weaning, many calves leave the farm or ranch where they were born to be sold at livestock auction markets at 6 and 12 months of age.

Consumers prepare and enjoy eating meat as part of a healthy diet!

Between 6 and 12 months of age, cattle spend time grazing pastures. Here, they gain weight and convert forage and grass into lean protein.

Beef cows produce calves that are born and raised on cow-calf farms and ranches. These cattle spend time grazing on grass pastures.

Cattle spend 4 to 6 months at a feedyard being fed a balanced diet of grain and roughage (hay). Cowboys, veterinarians and nutritionists watch them with a careful eye.

Cattle are sent to a packer/processing facility to be harvested and processed. The store displays and offers packages of meat to consumers.

Calves are separated from their mothers between 6 and 8 months of age.