



**Kansas Foundation  
for AGRICULTURE  
IN THE CLASSROOM**

# 2023 ANNUAL REPORT



[www.ksagclassroom.org](http://www.ksagclassroom.org)

785-320-4350

[info@ksagclassroom.org](mailto:info@ksagclassroom.org)

# YEAR AT A GLANCE

**4,300+** Facebook page follows

**13** Teachers attending NAITCO

Teachers receiving newsletters **3,800+**

**4** Educator mini-grants

Educator Scholarships **5**

Teachers reached **4,000+**

**82,000+** Students reached

**199**

Teachers using Journey 2050



**1,385**

Agri-tags throughout  
the state of Kansas!



Proceeds from this specialty license plate  
contribute to KFAC's operations budget.

## Mission

Connecting  
Classrooms to  
Kansas  
Agriculture

## Vision

Agriculture in  
every classroom,  
every day

# KIT EXPANSION

## 2023 Free Classroom Kits in 2023

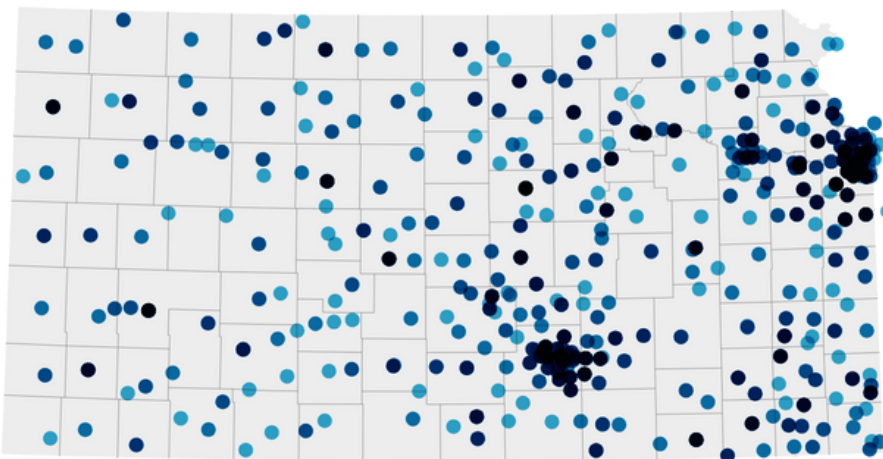
KFAC's lesson-plan kit offers a free lesson and activity to incorporate agriculture into a class. In 2023, we sent out 2,023 K-12th grade kits to educators across Kansas, reaching 810 schools and more than 50,000 students. 85% of the teachers receiving kits were not yet connected with KFAC. This program has enhanced our ability to connect with new teachers and allowed us to reach all 105 Kansas counties, as well as get at least one kit in every school district.

We expanded our kit offerings in 2023 by adding a 6-8th grade kit and a 9-12th grade kit to our already offered K-2nd grade and 3-5th grade kits. The 6-8th grade kit uses pasteurized and ultra-high-temperature (UHT) milk to help students learn how different temperatures affect the growth of spoilage bacteria. The 9-12th grade kit teaches students about DNA and walks them through how to extract DNA from beef jerky. We are excited to offer these kits again in 2024 and are so grateful to our donors for supporting this project.



# 2,023

## Free Educator Kits Sent



Teachers reached **2,023**  
**50,000+** Students reached  
Schools reached **810**  
**All** School Districts reached  
Counties reached **all 105**  
**85%** to teachers new to KFAC



# HONORING EDUCATORS



KFAC awarded four Educator Mini-Grants and is following teachers through the 2023-2024 school year as they complete their projects. We can't wait to share them with you.

## New Project Grant Winners

Kasha Moritz - 4-6th Grade at Harper Elementary

Robin Whitten - 5th Grade Teacher at Oliver Brown Elementary

## New Teacher Grant Winners

Teresa Schulze - 9-12th Grade Science at Norton Community High

Lynette Bosch - Kindergarten at Canton-Galva Elementary

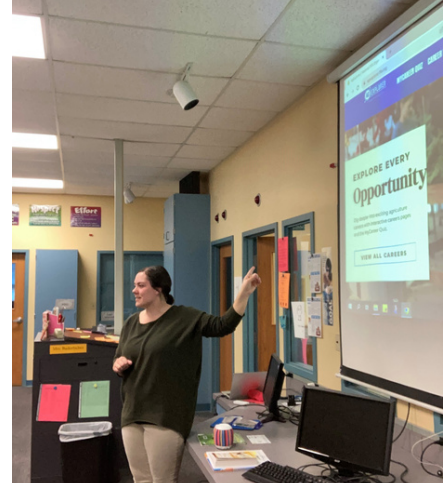
Kansas was well represented at the 2023 National Agriculture in the Classroom Conference in Orlando, Florida. Nine of the fourteen educators that attended from Kansas received a scholarship to attend. The conference featured four days of speakers and workshops that attendees could choose from based on their grade level, subject, or interest. As many as eight workshops were happening at one time, so educators could receive a customized experience that provides professional development that is unmatched by any other event.



KFAC helped five Kansas teachers attend the National Agriculture in the Classroom Summer Conference in Orlando, Florida, thanks to generous scholarship sponsors. All five educators were attending the conference for the first time. These scholarships were made possible by Kansas Wheat, Kansas Soybean, Kansas Sorghum, Kansas Cooperative Council, and Kansas Department of Agriculture. We are gathering sponsorships for additional 2024 scholarships. Contact KFAC staff to help a teacher get high-quality professional development in teaching agriculture by sponsoring a NAITCO scholarship

# EDUCATING THE FUTURE

## Elizabeth Badertscher



Elizabeth Badertscher, sixth-eighth grade math and stem teacher at Sabetha Middle School, was recently named the 2024 Kansas Foundation for Agriculture in the Classroom (KFAC) Teacher of the Year.

KFAC's Teacher of the Year award recognizes teachers who instill a passion for learning about agriculture within their students. KFAC honors one teacher annually who has successfully integrated agricultural education into their pre-existing curriculum.

Badertscher is in her ninth year of teaching, where she incorporates agriculture into math, science, and STEM classes. She incorporates Journey 2050, an agricultural simulation game, into her classes as a unique way to assess students' knowledge of the topic practiced that day. She also adds daily exit questions to help students reflect on the influence the actions in the game could have on their lives.

"I believe I have helped my students better understand agriculture and the ripple effect it has on many aspects of our world," Badertscher says.

In another class, students study wind energy with the end goal of building a wind turbine. Students study every aspect of wind, including turbine and blade design, to figure out how much wind it would take to power their classroom. Combined with a novel study, students learn about another country's agriculture and sustainable agriculture practices.

Badertscher introduces many aspects of agriculture to her students to show them how important agriculture is to their community and what they can do to support it. By using innovation and technology, students stay engaged and are excited to learn more. She used the American Farm Bureau Purple Plow Challenge to allow students to use their knowledge and imagination to create their own food truck designs and sell food to other classes using the challenge criteria.

Badertscher will receive an all-expense paid trip to the 2024 National Agriculture in the Classroom conference in Salt Lake City, Utah. Badertscher will also be considered for the 2024 National Excellence in Teaching About Agriculture Award, presented by National Agriculture in the Classroom.

# HONORING DONORS

## 2023 Donors

These donors have made educational resources available through their generous support. We are very grateful for their investment in our mission. You can get your name on this list by investing today!



### Premier Partners (+\$25,000)



### Partner (\$10,000 - \$24,999)



### Supporter (\$5,000 - \$9,999)



Pete Henry  
Foundation

### Classroom Connector (\$1,000 - \$4,999)

Central National Bank  
David Whitney  
Frahm Farmland, Inc  
High Plains Journal  
James Adams  
Jill Schneider

Kansas Bankers Association - Ag Division  
Kansas Beef Council  
Kansas Cooperative Council  
LaJane and Frank Anderson  
Midwest Dairy  
Nicholson Ventures

# HONORING DONORS

## 2023 Donors

### Advocate (\$500 - \$999)

Ag Mark LLC  
Dan Kerschen  
Lee Reeve

Kansas Association of Conservation  
Districts (KACD) Auxiliary  
Kansas Master Farm Homemakers Guild

KS State Bank  
Producers Cooperative Association  
Royal Farms Dairy

### Contributer (<\$500)

Beacher Grain, Inc.  
Bill and Erma Riley Family Foundation  
Blankenship Seeds  
Colle Land and Cattle  
Cornerstone Ag LLC  
D E Bondurant Grain., Co.  
Farmers Alliance Mutual Insurance  
Company  
Farmers State Bank - Westmoreland  
Frieling Grain Co., Inc.  
Great Bend Feeding, Inc.  
Guaranty State Bank & Trust Company  
Huntington Ranch  
J.B. Pearl Sales & Service, Inc.  
Kansas Sunflower Commission  
Kopriva Farms  
LivestockDirect  
Marketing Angle  
Mattson Ranch Company  
Midway Coop Assn.  
Midwest Concrete Materials, Inc.  
Morrill Elevator, Inc.  
Ohlde Seed Farms, Inc.  
Ottawa Coop Association  
Sure Crop Fertilizers  
Trinity Ag, LLC  
United Ag Service  
Valley Coop Inc.  
Aaron Harries  
Abigail Snyder  
Agri Trails Coop  
Alicia Brewer  
Angela Beavers  
Ashley Klozenbucher  
Barbara Meyer  
Beth Regehr  
Bill Mai  
Bill Spiegel  
Bill Wood  
Bret Henderson  
Brett Arndt

Britt Feltner  
Brooke Klebe  
Charlie Sargent  
Cheryl Soderlund  
Cindy Baldwin  
Cindy Colle  
Cindy Epler  
Cindy Logan  
Dan Moser  
David Schafer  
DelaineStalker  
Donald Peterson  
DONNA WISE  
Doris Ericson  
Doug and Anne Jardine  
Doug Beech  
Doug Jardine  
Douglas Haverkamp  
Duane Blythe  
Duane Dunn  
Dusti Gallagher  
Frank and Jan Lyons  
George Cayot  
Glenn Brunkow  
Gregg Gartrell  
Guy Shoulders  
Hannah Adame  
Heather Lansdowne  
Hollie Harter  
Isaac Gutsch  
Jack Salava  
James Gordon  
Jancey Hall  
Jennifer Latzke  
Jim Culp  
Jim Weaver  
Joanne Carr  
Judy R. Kimball  
Justin Gilpin  
Kate Brewster

Kate Urban  
Keith Westervelt  
Kelly Carmody  
Kolin Klozenbucher  
Kristen Starr  
Kristin Dolechek  
Kurt Maurath  
Lacie Fair  
Lauren Westhoff  
Laurie Curtis  
Linda Chase  
Luther Hamman  
Marsha Boswell  
Mary Anne Stoskopf  
Mary Schulz  
Max Engler  
Melissa Brown  
Melissae Stiles  
Michael Adame  
Michael Wright  
Mitchelle Perez  
Morgan Nitsch  
Nancy Zenger Beneda  
Nichole Gouldie  
Patricia Wolfe  
Patsy Vining  
Roger Fox  
Rosemary Boggs  
Serita Blankenship  
Shannon Fox  
Steve Fisher  
Steven and Nancy Manche  
Steven Graham  
Sue Adams  
Thomas Tuggle  
Tom Morton  
Tyler Royle  
Vickie and Eldon Lawless  
Victoria Thompson  
Warren Slocombe

Allen County Conservation District  
Bourbon County Conservation District  
Butler County Conservation District  
Chautauqua County Conservation District  
Cloud County Conservation District  
Coffey County Conservation District  
Comanche County Conservation District  
Decatur County Conservation District  
Elk County Conservation District  
Greenwood County Conservation District  
Harvey County Conservation District  
Jackson County Conservation District  
Jefferson County Conservation District  
Jewell County Conservation District  
Kiowa County Conservation District  
Labette County Conservation District  
Lane County Conservation District  
Leavenworth County Conservation District  
Marion County Conservation District  
Mitchell County Conservation District  
Morris County Conservation District  
Norton County Conservation District  
Osage County Conservation District  
Pottawatomie County Conservation District  
Reno County Conservation District  
Republic County Conservation District  
Riley County Conservation District  
Rooks County Conservation District  
Rush County Conservation District  
Seward County Conservation District  
Stafford County Conservation District  
Sumner County Conservation District  
Wabaunsee County Conservation District  
Wilson County Conservation District  
Harvey County Farm Bureau  
Labette County Farm Bureau  
Reno County Farm Bureau  
Shawnee County Farm Bureau  
Wabaunsee County Farm Bureau



# SECURING OUR FUTURE

There are many ways to support KFAC. Consider leaving your legacy with KFAC today!

## Donate

By giving on one of our annual giving days, your donations can be matched; however, any time is a great time to give! You can give through Benevity, Thrivent, Venmo, PayPal, Facebook, or a designated giving page.

Sporting an Agri-tag specialty license plate on your vehicle is a great way to support KFAC with an annual tax-deductible donation while promoting agriculture everywhere you go! Talk to your County Treasurer about how to get yours.

## Agri-tag

## Share

Sharing our posts on social media, our mission with friends, and our free resources with educators are excellent ways to support KFAC! You can help us grow our reach.

## Looking to leave a lasting legacy?

Support KFAC's mission by leaving a bequest in your will or living trust.

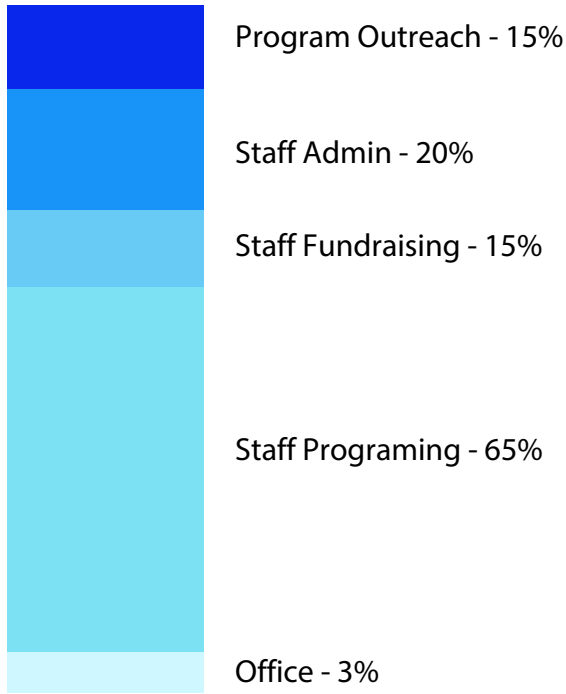
Include the following information in your bequest:  
Legal name: Kansas Foundation for Agriculture in the Classroom  
Federal Tax ID #48-0963313  
Address: 1990 Kimball Ave Manhattan, Kansas 66502  
<https://ksagclassroom.org/giving/planned/>

## Planned Giving

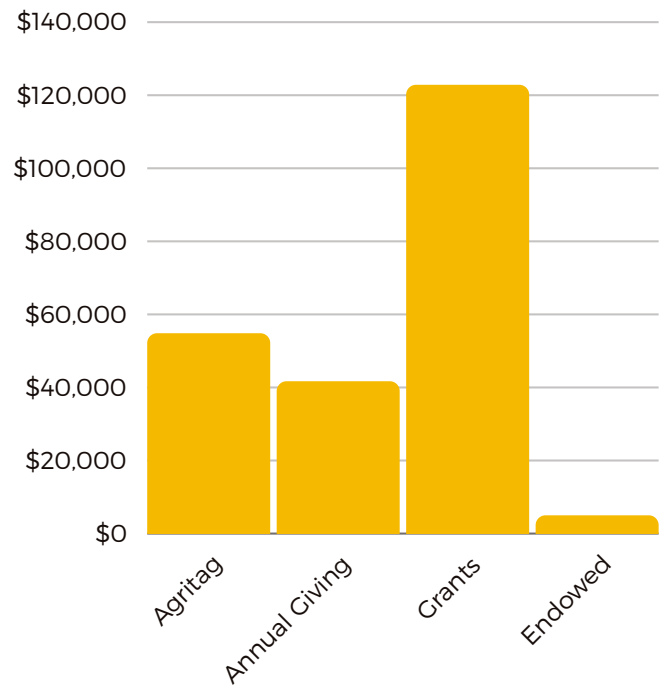


# FINANCIAL LEGACY

## ANNUAL EXPENSES



## 2023 INCOME



**\$227,741**

Total Expenses

**\$232,112**

Total Income

	2021	2022	2023
Total Giving	\$78,697	\$82,133	\$96,547
Total Grants	\$136,323	\$152,574	\$137,250

# DIRECTOR'S PERSPECTIVE

Dear KFAC Supporters,

A great year is behind us, in which we have developed new programming, strengthened our financial position, and established new relationships. These advancements are the foundation on which we move into 2024, recognizing that increasing agricultural literacy is as critical as ever.

Agriculture and education have historically been closely intertwined. When most Americans lived on farms or in small towns, families did chores before and after school. Farm work schedules, such as planting and harvesting, influenced the school and activities calendar. Old school books were abounded with agricultural references because everyone was familiar with agriculture. However, as the farm population shrank, the school emphasis on farming decreased, forcing agricultural education to be offered only to those interested in an agricultural career.

In recognition of this trend, the U.S. Department of Agriculture, representatives of agricultural groups, and educators met in Washington, D.C., to discuss agricultural literacy. They formed a national task force that created the National Agriculture in the Classroom Organization (NAITCO). Kansas started a state organization as a member of NAITCO in 1982.

Since 1982, the number of Kansas farmers and people directly involved in production agriculture has decreased. In many cases, young people are now 3 or 4 generations removed from their families that did chores before and after school. They don't even have a relative's farm to visit. Yet, according to the Kansas Department of Agriculture (KDA), agriculture is the largest economic driver in Kansas, with a total contribution of \$81 billion to the Kansas economy. The agricultural sector supports over 253,000 jobs, about 13% of the state workforce. Kansas makes a global impact by exporting over \$3.6 billion in agricultural products. How many of our Kansas young people know about the effects of Kansas agriculture on their quality of life, the operation of the state they live in, or the global food supply? Is it important that they do know?

I am very grateful to work with a team of staff and volunteers who believe it is vital that Kansans know the origins of their food, fiber, and fuel. As Kansas is a leader in many areas of agricultural production, we should also be a leader in agricultural literacy so our young people can ensure a positive future for our state, country, and world.

With the gracious support of our partners and donors, KFAC will continue to counter the growing gap in agricultural literacy by engaging more educators in our mission in 2024 to ensure Kansas youth are knowledgeable leaders for tomorrow!

Sincerely,



Nancy Zenger-Beneda  
KFAC Executive Director



# LEADERS LEGACY

## 2023 KFAC Staff

Nancy Zenger-Beneda, Executive Director  
Briana Jacobus, Communications Specialist

## 2023 Board of Directors

Nichole Gouldie, Chair  
Glenn Brunkow, Chair-Elect  
Cindy Baldwin, Past Chair  
Dusti Gallagher, Treasurer  
Doug Jardine, Secretary  
Jim Adams, Director  
Doug Beech, Director  
Casey Biesenthal, Director  
Cindy Colle, Director

Laurie Curtis, Education Chair  
Jennifer Latzke, Marketing Chair  
Jack Salava, Director  
Charlie Sargent, Director  
Dennis Hershberger, Board of Education Rep  
Russel Plaschka, Kansas Dept of Agriculture Rep  
Dan Moser, KSU College of Agriculture Rep  
Glenda Eichman, KSU College of Education Rep

## 2023 Committee Members

Brandi Miller, Education Committee  
Guy Shoulders, Education Committee  
Serita Blankenship, Education Committee  
Angela Beavers, Education Committee  
Barbara Meyer, Investment Committee  
Jim Weaver, Investment Committee  
Luther Hamman, Investment Committee  
Amanda Straight, Finance Committee

Marsha Boswell, Marketing Committee  
Laura Munsch, Marketing Committee  
  
Amy Benz, Curriculum Advisory Team  
Kacie Lockyear, Curriculum Advisory Team  
Nancy Smith, Curriculum Advisory Team  
Patricia Wolfe, Curriculum Advisory Team  
Wanda Small, Curriculum Advisory Team

*"Farming looks mighty easy when your plow is a pencil,  
and you're a thousand miles from the cornfield."*  
**- President Dwight D. Eisenhower**



# LOOKING FORWARD

New lessons coming in 2024!  
We are excited to announce a new project available February 2024! Apple Kansas, a Kansas-centric spin on the popular Apple Earth lessons, will include lessons and resources for Kindergarten-12th grade. Accompanying Apple Earth models will be available for checkout at your local educational service center.



## **KFAC Teacher Professional Development Workshops**

**Manhattan, Kansas**

**July 16-18, 2024 & July 22-24, 2024**



KFAC will offer two opportunities for educators to learn about agriculture and work with peers to develop a curriculum that can be used in their classrooms. The first workshop will focus on plant genetics, product development, and biosecurity. This workshop is open to all educators, but recommended for 6-12th grade STEM Teachers. The second workshop will focus on grain marketing, milling science, and baking science. This workshop is open to all educators.

# HONORING OUR LEGACY

## ABOUT KFAC

Kansas Foundation for Agriculture in the Classroom is an affiliate program of Kansas State University and a member organization of National Agriculture in the Classroom.

**KANSAS STATE**  
UNIVERSITY



<https://www.guidestar.org/profile/48-0963313>

### **What is agriculture literacy?**

A person who understands and can communicate the source and value of agriculture as it affects our quality of life.

Much of the United States history closely ties agriculture and education. In 1981, the U.S. Department of Agriculture invited agricultural groups and educator representatives to Washington, D.C., to discuss agricultural literacy. The USDA then established Agriculture in the Classroom with the endorsement of all living former Secretaries of Agriculture, the National Association of State Departments of Agriculture, the National Conference of State Legislatures, most Governors of the States, and the major agricultural organizations and commodity groups. Since then, these partnerships have made significant progress in advancing the mission of introducing agriculture into classrooms nationwide.

Kansas Foundation for Agriculture in the Classroom was founded in 1982 as a statewide educational program to help Kansas youth understand the importance of agriculture in their daily lives. In 1985, KFAC held its first summer graduate course for Kansas Teachers, marking its commitment to providing teachers with agricultural experiences, credible resources, and hands-on lesson plans. Since then, KFAC has provided resources, training, and support for educators, schools, and volunteers to spark meaningful connections between classrooms and Kansas agriculture.

Since our founding, eight persons have served as KFAC's Executive Director. Eighteen individuals have served as the chair of the Board of Directors, which currently has 17 members, four representing the Kansas Department of Agriculture, the Kansas State Department of Education, and Kansas State University's College of Agriculture and College of Education.

In recent years, KFAC has focused on expanding its reach across Kansas, strengthening lesson plans to include Kansas Academic Standards, enhancing our lesson-plan database to include grades K-12, and reaching a new audience of educators that includes volunteers and home school teachers.