



**Kansas Foundation  
for AGRICULTURE  
in the Classroom**

# 2022 Annual Report

*Honoring our legacy to secure our future.*

[www.ksagclassroom.org](http://www.ksagclassroom.org)

785-320-4350

[info@ksagclassroom.org](mailto:info@ksagclassroom.org)



# OUR REACH EXPANDS



## Social Reach Expands

KFAC has greatly expanded our social media reach by posting more often and posting shareable content. Thanks to amazing supporters like you, our Facebook reach increased by 245%, and our Instram reach grew by more than 800%, helping us to reach over 400,000 people. More initiatives are coming in 2023, and we cannot wait to share them with you on more platforms and new formats.

## Kit Reach Expands

KFAC's lesson-plan kit offers a free lesson and activity to incorporate agriculture into a class. In 2022, we sent out more than 1,000 K-5th grade kits to educators across Kansas, reaching over 465 schools and 25,000 students. More than 83% of the teachers receiving kits were not yet connected with KFAC. This program has enhanced our ability to connect with new teachers. We plan to continue expanding our reach by adding kits for grades 6-8 and 9-12 and increasing the number of kits we send. You can read more about our 2023 kit initiative at the end of this report and track our progress on social media as we aim to send 2,023 kits to educators in 2023.

## New Initiatives Expand

Career Awareness for Rural Agricultural Sciences Through Tower Gardening, or Project CARAT, will pilot a vertical gardening curriculum to teach high school students various agricultural sciences career-related skills. Project CARAT is a partnership between the K-State Rural Education Center in K-State College of Education and KFAC, funded by a \$150,000 grant from the National Institute of Food and Agriculture. Follow us to stay current as Washington County Schools pilot tests this program and professional development becomes available to share the curriculum with other schools.

## Mission

Connecting Classrooms  
to Kansas Agriculture

## Vision

Agriculture in every  
classroom, every day



# YEAR AT A GLANCE

**3,400+** Facebook page follows

Virtual Agriland views are up **500%**

**13** Teachers attending NAITCO

Teachers receiving newsletters **1,900+**

**245%** Increase in reach on Facebook

Website page views are up **38%**

**4** Educator mini-grants

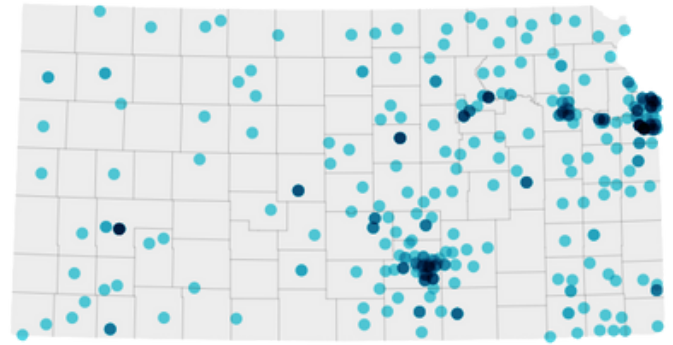
Educator Scholarships **5**

Teachers reached **2,000+**

**50,000+** Students reached

**1,000+**

Free Educator Kits Sent



**143**

Teachers using Journey  
2050 in their classrooms!



**1,360**

Agri-tags throughout  
the state of Kansas!



Proceeds from this specialty license plate  
contribute to KFAC's operations budget.



# HONORING EDUCATORS

## Educator Mini-Grant Winners

### New Project Grants

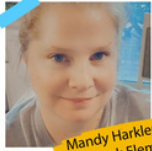


Mollie Kough  
Scott City Middle



Angela Black  
Walton Rural Life Center

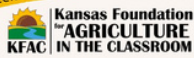
### New Teacher Grants



Mandy Harkleroad  
Wolf Creek Elementary



Leah Parsons  
Westridge Middle



KFAC awarded four Educator Mini-Grants and is following them through the 2022-2023 school year as they complete their projects. We can't wait to share them with you.

### New Project Grant Winners

Mollie Kough - FACS Teachers at Scott City Middle School

Angela Black - 2nd Grade Teacher at Walton Rural Life Center

### New Teacher Grant Winners

Mandy Harkleroad - 3rd Grade Teacher at Wolf Creek Elementary

Leah Parsons - 7th-8th Grade Science and Special Education at Westridge Middle School

Kansas was well represented at the 2022 National Agriculture in the Classroom Conference in Saratoga Springs, New York. Seven of the eleven educators that attended from Kansas received a scholarship to attend. The conference featured four days of speakers and workshops that attendees could choose from based on their grade level, subject, or interest. As many as eight workshops were happening at one time, so educators could receive a customized experience that provides professional development that is unmatched by any other event.



## 2022 NATCO Scholarship Winners



**Patricia Wolfe**  
K-12 SPECIAL EDUCATION  
LAKEMARY CENTER, PAOLA  
Sponsored by Kansas Wheat



**Leah Parsons**  
7TH & 8TH GRADE SPECIAL EDUCATION  
WESTRIDGE MIDDLE, OVERLAND PARK  
Sponsored by Kansas Soybean



**Clara Schankie**  
5TH GRADE  
MADISON ELEMENTARY, MADISON  
Sponsored by Kansas Sorghum



**Brian Nelson**  
7TH GRADE SCIENCE  
ANDOVER CENTRAL MIDDLE, ANDOVER  
Sponsored by Kansas Corn

Thanks to our generous sponsors, we were able to help four Kansas teachers attend the National Agriculture in the Classroom Summer Conference in Saratoga Springs, New York. Three of these four educators were able to attend this conference for the first time because of these scholarships. These scholarships were made possible by Kansas Wheat, Kansas Soybean, Kansas Sorghum, and Kansas Corn. We hope to be able to offer even more scholarships in 2023. Contact KFAC staff to sponsor a scholarship for 2023.







# EDUCATING THE FUTURE

## Barbara McCaffree



Barbara McCaffree, early childhood through sixth-grade teacher at Bluestem Elementary in Leon, was recently named the 2023 Kansas Foundation for Agriculture in the Classroom (KFAC) Teacher of the Year. KFAC's Teacher of the Year award recognizes teachers who instill a passion for learning about agriculture within their students. KFAC honors one teacher annually who has successfully integrated agricultural education into their pre-existing curriculum.

McCaffree is in her 37th year of teaching, where she has been incorporating agriculture into classes since 2005. She continues to expand her agricultural lessons each year for early childhood through sixth-grade students through Bluestem's Ag Academy.

In 2019, McCaffree started Ag Academy in order for every student PreK-6th to be able to learn from her about agriculture. She incorporates general agriculture, soil science, sheep, goats, horses, beef, pork, poultry, and crops into her curriculum while advancing the curriculum for each grade level. McCaffree starts each unit with some form of hands-on experience to engage the students.

The 4th-6th grade classes handle the chores that take care of the animals' health, nutrition, and sanitation twice a day. Students also weigh the calves weekly to chart their progress and reassess feed rations.

"My goal is not to make all students farmers and ranchers, but to have the students appreciate how farmers and ranchers affect each of us," McCaffree says. "Everyone needs to know where their food and clothes come from."

Students at Bluestem have the opportunity to learn many life skills through the teachings during Ag Academy classes that can help them in the future. The students plant, grow and prepare the plants and vegetables for the two annual plant sales they host. The community, as well as the local FFA chapter, is actively involved and always looking for ways to help and donate.

McCaffree will be recognized during the 2023 KFAC Annual Meeting to be held in Manhattan in early 2023 and will receive an all-expense paid trip to the 2023 National Agriculture in the Classroom conference in Orlando, Florida. McCaffree will also be considered for the 2023 National Excellence in Teaching About Agriculture Award, presented by National Agriculture in the Classroom.



# EDUCATING THE FUTURE

## 2023 Kansas Farm Bureau Foundation for Agriculture Excellence in Teaching Awards Winners

Two teachers received our Excellence in Teaching Award this year, sponsored by the Kansas Farm Bureau Foundation for Agriculture. The Excellence in Teaching awards are given to exemplary teachers who integrate agriculture into their classroom lessons and curriculum. Each of these winners will receive their choice of a \$600 scholarship to attend the 2022 NAITC conference or a \$200 gift certificate to purchase classroom supplies.



**Shelby Taylor**

Shelby Taylor is a sixth-eighth-grade teacher at Thunder Ridge Middle School in Agra, Kansas. Taylor believes one of the biggest things we can do to encourage agriculture is to ensure that students understand how agriculture affects everyone, not just farmers. She does this by incorporating agriculture into science, financial literacy, STEM classes, and taking students to see agriculture in action through tours like the local ethanol plant.



**Carla Varner**

Carla Varner is a fifth-grade teacher at Blackmore Elementary in El Dorado, Kansas. She likes to use real-world examples to incorporate agricultural concepts into the classroom. The highlight of the year for her students is the annual trip to her family farm, where students see all of the machinery, animals, and farmland in person.



# HONORING DONORS

## 2022 Donors

These donors have made educational resources available through their generous support. We are very grateful for their investment in our mission. You can get your name on this list by investing today!



### Premier Partners (+\$25,000)



### Partner (\$10,000 - \$24,999)



### Supporter (\$5,000 - \$9,999)



### Classroom Connector (\$1,000 - \$4,999)

Ag Mark LLC  
 American Farm Bureau Foundation  
 Central National Bank  
 David Whitney  
 High Plains Journal  
 James Adams

Kansas Association of Conservation Districts Auxiliary  
 Kansas Bankers - Ag Division  
 Kansas Conservation and Environmental Education  
 Midwest Dairy  
 Nicholson Ventures



# HONORING DONORS

## 2022 Donors

### Advocate (\$500 - \$999)

Cattle Empire LLC  
Industrial Maintenance Inc.  
Kansas Dairy Commission

Lon Frahm  
Marsh and McLennan Agency LLC  
Noble Dairy LLC

Orscheln Farm & Home  
River Creek Farms  
Royal Farms Dairy

### Contributer (<\$500)

Beacher Grain, Inc.  
Bill and Erma Riley Family Foundation  
Blankenship Seeds  
Colle Land and Cattle  
Cornerstone Ag LLC  
D E Bondurant Grain., Co.  
Farmers Alliance Mutual Insurance Company  
Farmers State Bank - Westmoreland  
Frieling Grain Co., Inc.  
Great Bend Feeding, Inc.  
Guaranty State Bank & Trust Company  
Huntington Ranch  
J.B. Pearl Sales & Service, Inc.  
Kansas Sunflower Commission  
Kopriva Farms  
LivestockDirect  
Marketing Angle  
Mattson Ranch Company  
Midway Coop Assn.  
Midwest Concrete Materials, Inc.  
Morrill Elevator, Inc.  
Ohlde Seed Farms, Inc.  
Ottawa Coop Association  
Sure Crop Fertilizers  
Trinity Ag, LLC  
United Ag Service  
Valley Coop Inc.  
Aaron Harries  
Abigail Snyder  
Agri Trails Coop  
Alicia Brewer  
Angela Beavers  
Ashley Klozenbucher  
Barbara Meyer  
Beth Regehr  
Bill Mai  
Bill Spiegel  
Bill Wood  
Bret Henderson  
Brett Arndt

Britt Feltner  
Brooke Klebe  
Charlie Sargent  
Cheryl Soderlund  
Cindy Baldwin  
Cindy Colle  
Cindy Epler  
Cindy Logan  
Dan Moser  
David Schafer  
DelaineStalker  
Donald Peterson  
DONNA WISE  
Doris Ericson  
Doug and Anne Jardine  
Doug Beech  
Doug Jardine  
Douglas Haverkamp  
Duane Blythe  
Duane Dunn  
Dusti Gallagher  
Frank and Jan Lyons  
George Cayot  
Glenn Brunkow  
Gregg Gartrell  
Guy Shoulders  
Hannah Adame  
Heather Lansdowne  
Hollie Harter  
Isaac Gutsch  
Jack Salava  
James Gordon  
Jancey Hall  
Jennifer Latzke  
Jim Culp  
Jim Weaver  
Joanne Carr  
Judy R. Kimball  
Justin Gilpin  
Kate Brewster

Kate Urban  
Keith Westervelt  
Kelly Carmody  
Kolin Klozenbucher  
Kristen Starr  
Kristin Dolechek  
Kurt Maurath  
Lacie Fair  
Lauren Westhoff  
Laurie Curtis  
Linda Chase  
Luther Hamman  
Marsha Boswell  
Mary Anne Stoskopf  
Mary Schulz  
Max Engler  
Melissa Brown  
Melissae Stiles  
Michael Adame  
Michael Wright  
Mitchelle Perez  
Morgan Nitsch  
Nancy Zenger Beneda  
Nichole Gouldie  
Patricia Wolfe  
Patsy Vining  
Roger Fox  
Rosemary Boggs  
Serita Blankenship  
Shannon Fox  
Steve Fisher  
Steven and Nancy Manche  
Steven Graham  
Sue Adams  
Thomas Tuggle  
Tom Morton  
Tyler Royle  
Vickie and Eldon Lawless  
Victoria Thompson  
Warren Slocombe

Allen County Conservation District  
Bourbon County Conservation District  
Butler County Conservation District  
Chautauqua County Conservation District  
Cloud County Conservation District  
Coffey County Conservation District  
Comanche County Conservation District  
Decatur County Conservation District  
Elk County Conservation District  
Greenwood County Conservation District  
Harvey County Conservation District  
Jackson County Conservation District  
Jefferson County Conservation District  
Jewell County Conservation District  
Kiowa County Conservation District  
Labette County Conservation District  
Lane County Conservation District  
Leavenworth County Conservation District  
Marion County Conservation District  
Mitchell County Conservation District  
Morris County Conservation District  
Norton County Conservation District  
Osage County Conservation District  
Pottawatomie County Conservation District  
Reno County Conservation District  
Republic County Conservation District  
Riley County Conservation District  
Rooks County Conservation District  
Rush County Conservation District  
Seward County Conservation District  
Stafford County Conservation District  
Sumner County Conservation District  
Wabaunsee County Conservation District  
Wilson County Conservation District  
Harvey County Farm Bureau  
Labette County Farm Bureau  
Reno County Farm Bureau  
Shawnee County Farm Bureau  
Wabaunsee County Farm Bureau





# SECURING OUR FUTURE

There are many ways to support KFAC. Consider leaving your legacy with KFAC today!

## Donate

By giving on one of our annual giving days, your donations can be matched; however, any time is a great time to give! You can give through Benevity, Thrivent, Venmo, PayPal, Facebook, or a designated giving page.

Sporting an Agri-tag specialty license plate on your vehicle is a great way to support KFAC with an annual tax-deductible donation while promoting agriculture everywhere you go! Talk to your County Treasurer about how to get yours.

## Agri-tag

## Share

Sharing our posts on social media, our mission with friends, and our free resources with educators are excellent ways to get support KFAC! You can help us grow our reach.

## Looking to leave a lasting legacy?

Support KFAC's mission by leaving a bequest in your will or living trust.

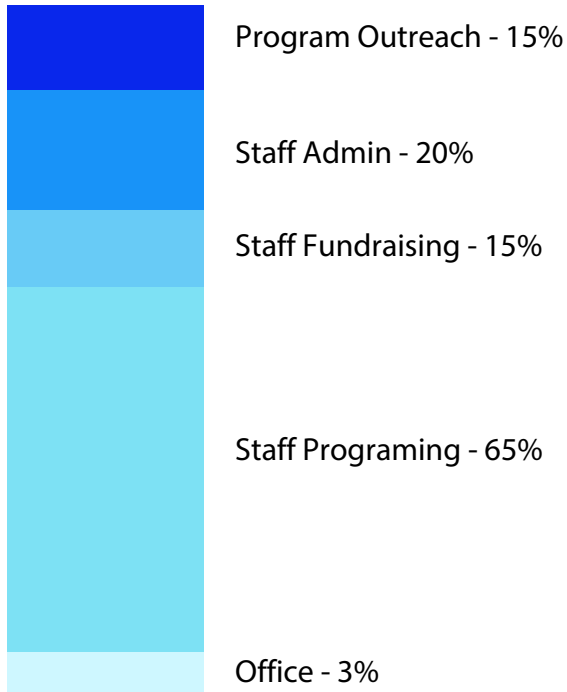
## Planned Giving

Include the following information in your bequest:  
Legal name: Kansas Foundation for Agriculture in the Classroom  
Federal Tax ID #48-0963313  
Address: 1990 Kimball Ave Manhattan, Kansas 66502

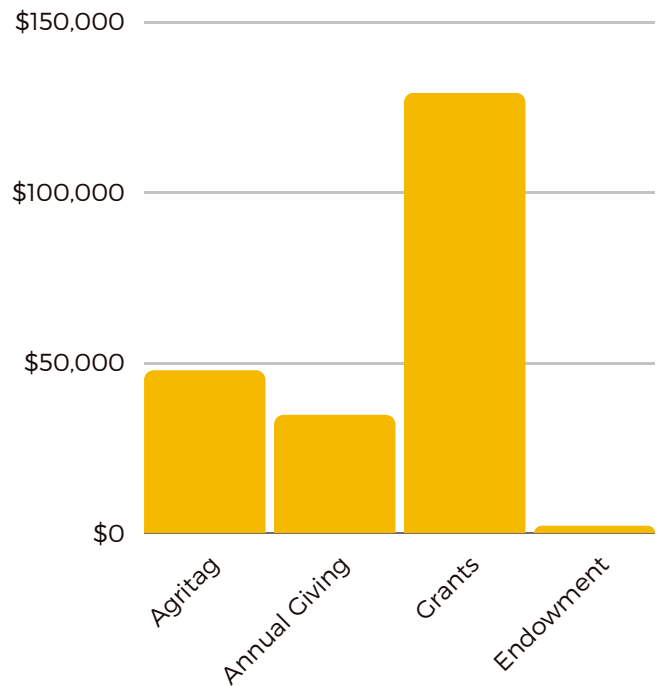


# FINANCIAL LEGACY

## ANNUAL EXPENSES



## 2022 INCOME



**\$233,108**

Total Expenses

**\$234,707**

Total Income

	2020	2021	2022
Total Giving	\$76,025	\$78,697	\$82,133
Total Grants	\$76,384	\$136,323	\$152,574



# DIRECTOR'S PERSPECTIVE



Rapid change is happening all around us. Technology continues to change how we live, work, communicate, and learn. Amid this ongoing transformation, it can be challenging to plan for the future. However, something we can be sure of is exceptional education has the power to unlock students' potential and better prepare them for whatever the future holds. I believe education about agriculture is more crucial than ever. Widespread agricultural knowledge will help secure our future quality of life and national position because our population will understand the impact agriculture has on all aspects of our lives.

The constant change we face makes KFAC's mission of "connecting classrooms to Kansas agriculture" more important than ever. Through providing resources, professional development, and support for educators to teach students about the origins of their food, fiber, and fuel, we are influencing the development of more than 50,000 students annually. In 2022, we significantly expanded our network through social media, in-person events, word of mouth, and our website. Our 2022 social media reach was just under 400,000, our website views were up 38%, and we added 935 teachers to our database. But, we recognize the need to continue this expansion to reach more Kansas educators.

This report is a look back at our growth in 2022 and signals the potential for future growth. Though we have gained some traction in our efforts to increase agricultural literacy, we have great lengths to go to as we strive to reach all 105 Kansas counties. By working together, we can continue the growth and expansion of the agriculture in the classroom program to influence the development of Kansas youth. And in doing so, we'll create a well-prepared workforce and a knowledgeable generation of well-rounded citizens.

Our donors helped us honor our legacy as we celebrated our 40th year serving Kansans and initiated an endowment to begin to secure a future for our program. We are inspired by the generosity of our donors and pledge to make 2023 our best year yet! Thank you for your commitment to sharing agriculture.

Sincerely,

A handwritten signature in black ink that reads "Nancy Zenger-Beneda".

Nancy Zenger-Beneda  
KFAC Executive Director



# LEADERS LEGACY

## 2022 KFAC Staff

Nancy Zenger-Beneda, Executive Director  
Briana Jacobus, Communications Specialist

## 2022 Board of Directors

Jim Adams, Past Chair	Angela Beavers, Member
Cindy Baldwin, Chair	Doug Beech, Member
Dusti Gallagher, Treasurer	Glenn Brunkow, Member
Doug Jardine, Secretary	Laurie Curtis, Member
Jennifer Latzke, Member	Jack Salava, Member
Cindy Colle, Education Chair	Charlie Sargent, Member
Nichole Gouldie, Chair-Elect Marketing Chair	
Ben Jones, Board of Education Rep	Russel Plaschka, Kansas Dept of Agriculture Rep
Dan Moser, KSU College of Agriculture Rep	Janine Duncan, KSU College of Education Rep

## 2022 Committee Members

Barbara Meyer, Investment Committee	Amy Benz, Curriculum Advisory Team
Jim Weaver, Investment Committee	Kacie Lockyear, Curriculum Advisory Team
Luther Hamman, Investment Committee	Nancy Smith, Curriculum Advisory Team
Casey Biesenthal, Investment Committee	Patricia Wolfe, Curriculum Advisory Team
Amanda Straight, Finance Committee	Wanda Small, Curriculum Advisory Team
Marsha Boswell, Marketing Committee	
Laura Munsch, Marketing Committee	
Serita Blankenship, Education Committee	

*"Farming looks mighty easy when your plow is a pencil,  
and you're a thousand miles from the cornfield."*  
**- President Dwight D. Eisenhower**





# LOOKING FORWARD

We are excited about 2023! We hope that this will be another banner growth year for KFAC and that we will be able to reach more teachers than ever before. We need your help with one particular goal for 2023. We plan to send out 2,023 free classroom kits to educators across the state in 2023. If you would like to support this endeavor, please consider giving using the QR code.

**Help us send**

**2023**

**free classroom kits  
to educators  
across the state in**

**2023**

**KFAC** | **Kansas Foundation  
for AGRICULTURE  
IN THE CLASSROOM**

**KFAC Volunteer & Pre-Service Guides**

**KFAC** | **Kansas Foundation  
for AGRICULTURE  
IN THE CLASSROOM**

In 2022, we launched two new guides to help a new group disseminate our message to more K-12 students. In 2023, our Pre-Service Guide will be in the hands of all students in Kansas universities with education programs. Our volunteer guide will be available to all Kansas county farm bureau coordinators and conservation district managers.



# HONORING OUR LEGACY

## ABOUT KFAC

Kansas Foundation for Agriculture in the Classroom is an affiliate program of Kansas State University and a member organization of National Agriculture in the Classroom.



**KANSAS STATE**  
UNIVERSITY



### What is agriculture literacy?

A person who understands and can communicate the source and value of agriculture as it affects our quality of life.

In 1981, the USDA established Agriculture in the Classroom with the endorsement of all living former Secretaries of Agriculture, the National Association of State Departments of Agriculture, the National Conference of States Legislatures, most of the Governors of the States, and the major agricultural organizations and commodity groups. Significant progress has been made through these partnerships to advance the mission of introducing agriculture in the classroom.

The Kansas Foundation for Agriculture in the Classroom was founded in 1982. In 1985, KFAC held the first summer graduate course for Kansas teachers, marking KFAC's commitment to providing teachers with agricultural experiences, credible resources and standards-based, hands-on lesson plans. Through the years, KFAC has been able to offer opportunities for teachers and students alike, including the Janet Sims Memorial Teacher of the Year Award and the Bookmark Art contest.

Since 1982, six persons have served as the Administrator/Executive Director, and 10 individuals have served as the Chair of the Board of Directors. Currently, the Board of Directors has 16 members, four of which represent the Kansas Department of Agriculture, the Kansas State Department of Education, and Kansas State University's College of Agriculture and College of Education.

*Kansas Foundation for Agriculture in the Classroom is a 501(c)(3) organization.*