



**Kansas Foundation
for AGRICULTURE
IN THE CLASSROOM**

2021 Annual Report

**Investing in the future of agriculture
through classroom connections.**

www.ksagclassroom.org

785-320-4350

info@ksagclassroom.org



OUR LEGACY CONTINUES



New Website

There have been many changes in education in the last few years. In order to best serve Kansas educators, we knew we had to evolve with them. A new website with a clean, easy-to-use format that teachers are able to access from phone or computer was important to this upgrade. A refreshed Virtual Agriland gives teachers an easy way to teach major Kansas agriculture. A new student section allows students to play and learn about agriculture in and out of the classroom. Many more improvements are coming in 2022 and we cannot wait to show you.

New Endowment

At the end of 2021, we were looking back at the last 40 years. We knew we wanted to find a way to honor our legacy and secure our future. We are excited to announce that we have established a new endowment to help support the organization's future. We are confident with the support of our donors, we can meet the challenges of the future and ensure that the current generation of youth does not leave K-12 education without an understanding of the origins of their food, fiber, and fuel, as well as the impact of agriculture on their quality of life.

New Initiatives

KFAC hosted teachers from across the country for an experiential-based professional development workshop, From Lab to Classroom, at the Kansas Wheat Innovation Center. Teachers learned about different crop improvement methods, how they can apply the research they saw in their classrooms, and created lessons based on the knowledge they gained. This workshop was supported by the USDA National Institute of Food and Agriculture and National Agriculture in the Classroom, which made it possible for the teachers to attend the three day event for free.

Mission

Connecting Classrooms
to Kansas Agriculture

Vision

Agriculture in every
classroom, every day



YEAR AT A GLANCE

1,960+ Facebook likes

Lesson plan downloads **2,800+**

24 Teachers attending NAITCO

Teachers receiving newsletters **1,200+**

35% Increase in reach on Facebook

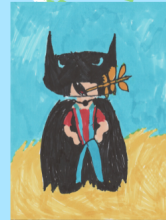
Website page views are up **18%**

5 KDA new teacher grants

Teachers reached **1,800+**

45,000+ Students reached

2021 KFAC Art Contest Winners Superheroes in Agriculture



Kindergarten
Maggie Langworthy
Silver Lake Elementary



1st Grade
Addison Allums
Robert Martin Elementary



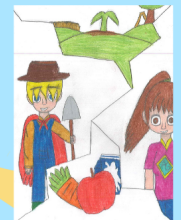
2nd Grade
Emma Lazar
Robert Martin Elementary



3rd Grade
Lily Hall
West Elementary



4th Grade
Zachary Sporleder
Robert Martin Elementary



5th Grade
Julissa Vargas
Cheylin Elementary

Kansas Foundation
for AGRICULTURE
IN THE CLASSROOM
KFAC

135

Teachers using Journey
2050 in their classrooms!



1280+

Agri-tags throughout
the state of Kansas!



Proceeds from this specialty license plate
contribute to KFAC's operations budget.



EDUCATOR HIGHLIGHTS



Serita Blankenship was awarded the 2021 Partnership in Agricultural Literacy (PAL) Award, presented by National Agriculture in the Classroom and National Grange Foundation. Blankenship won the award for her 20-plus-year commitment to educating Kansas Students about the importance of agriculture with programs like "Be Ag Wise," a joint venture with KFAC. We are proud of Serita for using her passion to help us educate the next generation about agriculture.



Kansas was well represented at the 2021 National Agriculture in the Classroom Conference in Des Moines, Iowa. Five of the 24 educators that attended from Kansas received a scholarship to attend. The conference featured four days of speakers that attendees could choose from based on their grade level, subject, or interest level. There were as many as eight workshop happening at one time, so educators were able to receive a very customized experience that is unmatched at a state level.

2022 TEACHER AWARDS

2022 KFAC Janet Sims Memorial Teacher of the Year



Nicole Ioerger
Olathe North
High School
Olathe, Kansas

2022 KFB Excellence in Teaching Award Winner



Tasha Taliaferro
Heller
Elementary
Independence,
Kansas

2022 KFB Foundation for Agriculture Excellence in Teaching Award Honorable Mention

Rochelle Butler
Madison Elementary
Madison, Kansas

John Wolters
Anthony Middle
Manhattan, Kansas



Kansas Foundation
for **AGRICULTURE**
IN THE CLASSROOM



KANSAS FARM BUREAU
Foundation for Agriculture

KFAC honors one teacher annually who has successfully integrated agricultural education into their pre-existing curriculum as the KFAC Janet Sims Memorial Teacher of the Year. This year, we also recognized a KFB Excellence in Teaching Award Winner and two honorable mentions.

These four teachers uniquely integrated agriculture into their K-12 classroom lessons in 2021. We are proud of all the hard work these teachers put into their classrooms in a year that teaching was not easy and was not always in person. Congratulations teachers!



EDUCATORS' LEGACY

Nicole Ioerger



Nicole Ioerger, a 9-12 grade science teacher at Olathe North High School, was recently named the 2021 Janet Sims Memorial Teacher of the Year by Kansas Foundation for Agriculture in the Classroom. KFAC's Janet Sims Memorial Teacher of the Year award recognizes teachers who instill a passion for learning about agriculture within their students. KFAC honors one teacher annually who has successfully integrated agricultural education into their pre-existing curriculum.

Ioerger is in her 10th year of teaching, where she devotes classroom time to learning through lab activities and case studies. Over the years, Ioerger has found that students respond best to agricultural concepts through hands-on activities and project-based learning. Making cheese during the animal products unit in animal science and setting up sustainable terrariums in the honors biology class are some of the class favorites.

Today's students have very little understanding of how their food is grown. Ioerger incorporates a lesson where students must create a cartoon strip that illustrates every step of how an animal product got from the farm to their plate.

"It has been extremely rewarding to watch students gain an understanding and appreciation for agriculture through the classes," Ioerger said. "We have even had a few graduates decide to pursue careers in agriculture after taking the class."

Ioerger's lessons incorporate agricultural concepts that address multiple Next Generation Science Standards (NGSS). Students can gain life skills working with animals within the selective Animal Health Academy at Olathe North High School. The students' families and the community are very involved in the program and help coordinate student volunteer opportunities and field trips to gain hands-on experience with animals.

Ioerger will receive an all-expense-paid trip to the 2022 National Agriculture in the Classroom Conference in Saratoga Springs, New York. She will represent Kansas as the entry for the 2022 National Excellence in Teaching About Agriculture Award, presented by National Agriculture in the Classroom.



EDUCATORS' LEGACY

Tasha Taliaferro



Tasha Taliaferro, a 2nd-grade teacher at Heller Elementary in Independence, Kansas, was recently awarded the Kansas Farm Bureau Foundation for Agriculture Excellence in Teaching Award Winner. This award goes to an outstanding teacher who uniquely integrates agriculture into their classroom lessons.

Taliaferro is in her second year of teaching and incorporates agriculture in almost every aspect of her classroom. When students walk into her classroom, they experience a Kansas theme, including decorations such as hay bales, sunflowers, and wildlife. Taliaferro then incorporates real-life connections into every lesson she teaches.

"The engagement in my classroom is next level because most of my lessons are created by the real-life connections and natural interest from my students at this age," said Taliaferro.

Taliaferro's classes found that connecting lessons to agriculture creates an environment where students can understand how everything is connected. Taliaferro also incorporates individual connections by having hands-on activities that allow her students to do purposeful things and create meaningful learning opportunities.

Taliaferro takes her commitment to the next level by connecting students to the local farmers and others within the community. Some activities include having a zoom call with a local farmer in the combine during harvest, connecting with a local hog farm, involvement at the county fair.

On a personal level, Taliaferro is slowly transitioning her small farm to a Learning Farm for her students to feed the pigs, then later show them at the fair and sell the pigs in the premium auction sale to help raise money for the project.

"They are more aware of the world around them," Taliaferro said. "My students are excited to learn because they love the projects, connections, and they thrive on doing something purposeful."

Taliaferro will receive a \$1,500 scholarship to attend the 2022 National Agriculture in the Classroom Conference held in Saratoga Springs, New York, in June of 2022.



EDUCATORS' LEGACY

2022 Kansas Farm Bureau Foundation for Agriculture Excellence in Teaching Honorable Mention

This year, two teachers received our Excellence in Teaching Honorable Mention, sponsored by the Kansas Farm Bureau Foundation for Agriculture. The Excellence in Teaching awards are given to exemplary teachers who integrate agriculture into their classroom lessons and curriculum. Each of these winners will receive their choice of a \$600 scholarship to attend the 2022 NAITC conference or a \$200 gift certificate to purchase classroom supplies.



Rochelle Butler

Rochelle Butler is a 3rd-grade teacher at Madison Elementary in Madison, Kansas. Butler works to help her students understand where their food comes from and how it is grown. She strives for students to have a lifelong desire to learn more about agriculture through her lessons. Butler coordinates their elementary Outdoor Learning Center, which consists of chickens, raised garden beds, and a greenhouse. Math standards are one of the many ways she integrates the greenhouse into everyday teaching. Butler's class also works with the local high school business teacher to provide spring, fall, and winter plant sales for the community.



John Wolters

John Wolters is a 6th-grade math teacher at Susan B. Anthony Middle School in Manhattan, Kansas. Wolters believes that students love to understand their world and knowing how their food gets to them is intrinsically motivating. He builds his teaching around the demonstration, affirmation, and conversation and desires to give his students knowledge on the origins of their food. Wolters utilizes a greenhouse to grow wheat, teams up with several Kansas State University departments and colleges and coordinates visits with local agricultural companies for students to have a more comprehensive look at careers in agriculture.



DONORS' LEGACY

2021 Donors

These donors have made educational resources available through their generous support. We are very grateful for their investment in our mission. You can get your name on this list by investing today!

Premier Partners (+\$25,000).



Partner (\$10,000 - \$24,999).



Supporter (\$5,000 - \$9,999).



Classroom Connector (\$1,000 - \$4,999)

Ag Mark LLC
Central National Bank
CHS Foundation
Kansas Bankers - Ag Division

Kansas Grain Sorghum
Lee Borck
Mid-Kansas Cooperative
Midwest Dairy

James Adams
Jill Mason
Pete Henry Foundation



DONORS' LEGACY

2021 Donors

Advocate (\$500 - \$999)

Dan Kerschen
Dave Whitney
Franklin County Farm Bureau
Industrial Maintenance Inc.

KACD Aux
Kansas Dairy Commission
Kansas Leadership Center

Nicholson Ventures
River Creek Farms
Royal Farms Dairy

Contributer (<\$500)

Abram Mertz
Amanda Strait
Amy Benz
Amy Langvardt
Angela Beavers
Arnita Schultz
Barb Depew
Barbara Grecian
Barbara Havlicek
Barbara Meyer
Beacher Grain, Inc.
Bill and Erma Riley Family Foundation
Blankenship Seeds
Bourbon County Conservation District
Brandi Miller
Bret Henderson
Britt Feltner
Butler County Conservation District
Cecil and Pat Vining
Charlie Sargent
Chautauqua County Conservation District
Cindy Baldwin
Cindy Colle
Cindy Epler
Cindy Shuman
Clay County Conservation District
Colle Land and Cattle
Cowley County Conservation District
Donald Peterson
Doug Beech
Doug Jardine
Douglas Haverkamp
Duane Blythe
Duane Dunn
Dusti Gallagher
Elk Co. Farm Bureau
Elk County Conservation District
Erika Poppelreiter
Farmers State Bank - Westmoreland

Frieling Grain Co., Inc.
Geary County Conservation District
Glenn Brunkow
GNBank
Greeley County Conservation District
Greenwood County Conservation District
Greg Gartrell
Guaranty State Bank & Trust Company
Harland Priddle
Huntington Ranch
J.B. Pearl Sales & Service, Inc.
Jack Salava
Jackson County Conservation District
James Gordon
Jancy Hall
Jason Watt
Jennifer Latzke
Jim Weaver
John and Charlotte Conard
John Concord
Jonathan Mertz
Judy R. Kimball
KanEquip Inc. -- Wamego
Keith Westervelt
Kiowa County Conservation District
Koontz Family
Kopriva Farms
Kristi Timm
Labette County Conservation District
Labette County Farm Bureau
Laurie Curtis
Lisa Markley
Luther Hamman
Lyon County Farm Bureau
Marketing Angle
Marshall County Conservation District
Mary Morton
Mary Schulz
Mattson Ranch Company

Max Engler
Meade County Conservation District
Mike Beam
Mike Chumley
Mitchell County Conservation District
Morris County Conservation District
Nancy Smith
Nancy Zenger Beneda
Nichole Gouldie
Ohlde Seed Farms, Inc.
Osage County Conservation District
Osage County Farm Bureau
Patricia Wolfe
Pederson Seed & Services, Inc.
Pottawatomie Co. Farm Bureau
Pottawatomie County Conservation District
Reno County Conservation District
Rooks County Conservation District
Rush County Conservation District
Sally Stroda
Seward County Conservation District
Sharon Davis
Shawnee County Farm Bureau
Skyland Grain LLC Stafford County Conservation District
Stanton County Conservation District
Steve Baccus
Steve Fisher
Steven and Nancy Manche
Steven Graham
Sue Donnelly
Sumner County Conservation District
United Ag Service
Wabaunsee County Conservation District
Wallace County Conservation District
Warren Slocombe
Wilson County Conservation District
Wilson County Farm Bureau



YOUR LEGACY

An investment in KFAC is an investment in the future of agriculture!

Donate

Sporting an Agri-tag specialty license plate on your vehicle is a great way to support KFAC with an annual tax deductible donation while promoting agriculture every where you go!.

By giving on one of our annual giving days, your donations can be matched, however, any time is a great time to give! You can also give while you shop by using AmazonSmile!

Agri-tag

Share

Volunteering to build classroom kits or information packets, spreading KFAC news, and encouraging donations helps KFAC broaden our reach.

Sharing our posts on social media, sharing our mission with friends, and sharing our free resources with educators are all excellent ways to get involved with KFAC!

Volunteer

Sponsor

Supporting KFAC through your long-term financial planning is always appreciated. Contact us today to learn more about planned giving.

Sponsoring projects and events is a great way to promote your business while helping KFAC fulfill its mission.

Planned Giving

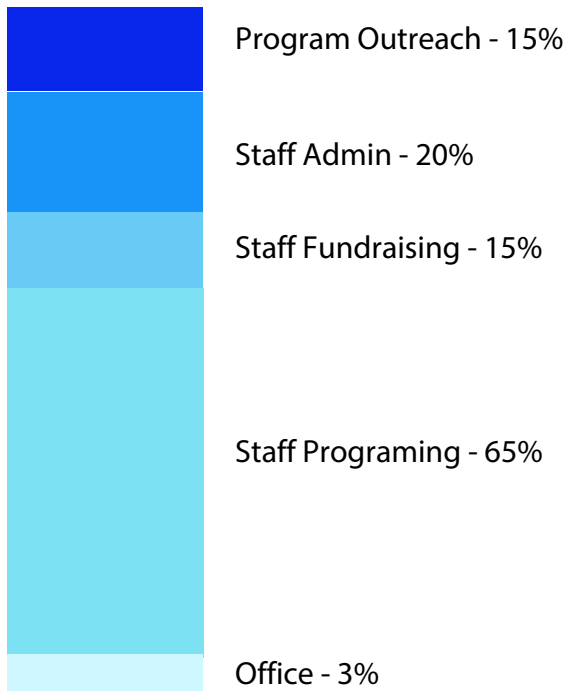
Endowment

Our newly founded endowment is a great way to help us secure funding for the future of this program.

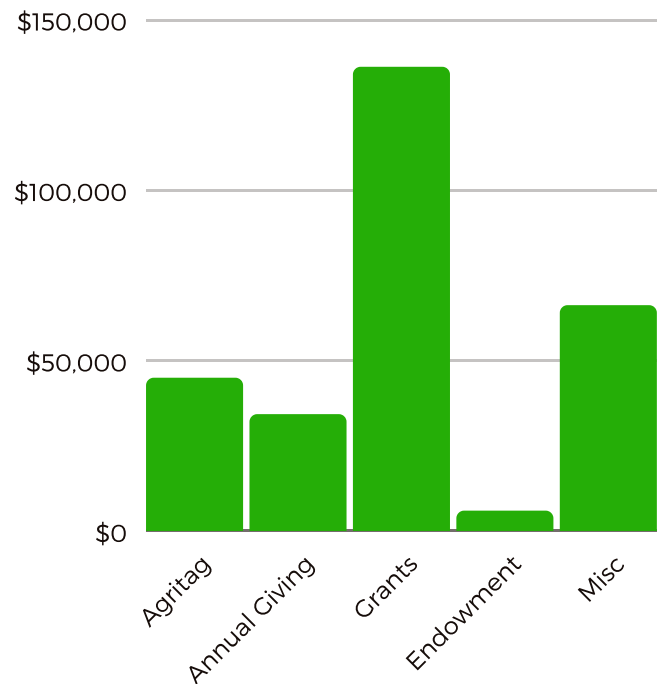


FINANCIAL LEGACY

ANNUAL EXPENSES



2021 INCOME



\$185,818

Total Expenses

\$306,231

Total Income

	2019	2020	2021
Total Giving	\$76,903	\$76,025	\$78,697
Total Grants	\$71,830	\$76,384	\$136,323



DIRECTOR'S LEGACY



Food production is the basis of all civilization. We need our citizens to understand the economic, social, and environmental significance of agriculture. We also need agriculturally literate policymakers who will create responsible regulations that support Kansas agriculture and our food supply. The most essential step in bridging the gap in agricultural literacy is not to let the next generation leave grade school without knowing the origins of their food, fiber, and fuel.

As a leader in supporting education about agriculture, KFAC provides resources to educators to encourage the infusion of agriculture into every classroom, every day. We have used your investments to improve the quality of our resources, raise awareness of our organization, and provide teacher professional development centered around agriculture.

2021 was a banner year for KFAC in many ways. Here are just a few accomplishments we are proud to have completed in 2021.

- Revision of lesson plans to include state standards and national ag literacy outcomes

- New website with expanded resources

- Expansion of free lesson planning kits from 2 to 4

- Increase in social media reach by 35%

- Highest fundraising year in KFAC history

This shortlist of accomplishments reflects the revitalization of support and interest in KFAC. Donor assistance has helped us expand our reach and focus on securing the organization's future to ensure our work continues for future generations. At KFAC's 40th anniversary celebration, we announced and dedicated proceeds to a newly established endowment that will help fund the future of KFAC.

Though we have gained some traction in our efforts to increase agricultural literacy, we have great lengths to go as we strive to reach all 105 counties in Kansas. We will continue to expand our reach and engage more educators in incorporating agriculture into their classrooms. Financial support is critical to our programming and expansion efforts. Your donations are an investment in the future of agriculture as we help educators grow tomorrow's leaders, consumers, and policymakers.

Sincerely,

Nancy Zenger-Beneda
KFAC Executive Director



LEGACY OF LEADERSHIP

2021 KFAC Staff

Nancy Zenger-Beneda, Executive Director

Briana Jacobus, Communications and Marketing Specialist

2021 Board of Directors

Jim Adams, Chair

Cindy Baldwin, Chair-Elect

Dusti Gallagher, Secretary

Doug Jardine, Treasurer/Finance Chair

Brandi Miller, Education Co-Chair

Cindy Colle, Education Co-Chair

Nichole Gouldie, Marketing Chair

Ben Jones, Board of Education Rep

Don Boggs, KSU College of Agriculture Rep

Angela Beavers, Member

Doug Beech, Member

Glenn Brunkow, Member

Laurie Curtis, Member

Jack Salava, Member

Charlie Sargent, Member

Russel Plaschka, Kansas Dept of Agriculture Rep

Janine Duncan, KSU College of Education Rep

2021 Committee Members

Barbara Meyer, Investment Committee

Jim Weaver, Investment Committee

Luther Hamman, Investment Committee

Casey Biesenthal, Investment Committee

Amanda Straight, Finance Committee

Marsha Boswell, Marketing Committee

Laura Munsch, Marketing Committee

Serita Blankenship, Education Committee

Amy Benz, Curriculum Advisory Team

Anna Luckert, Curriculum Advisory Team

Kacie Lockyear, Curriculum Advisory Team

Patricia Wolfe, Curriculum Advisory Team

Nancy Smith, Curriculum Advisory Team

Wanda Small, Curriculum Advisory Team

Kristi Timm, Education Committee

*"Farming looks mighty easy when your plow is a pencil,
and you're a thousand miles from the cornfield."*

- President Dwight D. Eisenhower



STANDING LEGACY

Kansas Foundation for Agriculture in the Classroom is an affiliate program of Kansas State University and a member organization of National Agriculture in the Classroom.



KANSAS STATE
UNIVERSITY

What is agriculture literacy?

A person who understands and can communicate the source and value of agriculture as it affects our quality of life.

ABOUT KFAC

In 1981, the USDA established Agriculture in the Classroom with the endorsement of all living former Secretaries of Agriculture, the National Association of State Departments of Agriculture, the National Conference of States Legislatures, most of the Governors of the States, and the major agricultural organizations and commodity groups. Significant progress has been made through these partnerships to advance the mission of introducing agriculture in the classroom.

The Kansas Foundation for Agriculture in the Classroom was founded in 1982. In 1985, KFAC held the first summer graduate course for Kansas teachers, marking KFAC's commitment to providing teachers with agricultural experiences, credible resources and standards-based, hands-on lesson plans. Through the years, KFAC has been able to offer opportunities for teachers and students alike, including the Janet Sims Memorial Teacher of the Year Award and the Bookmark Art contest.

Since 1982, six persons have served as the Administrator/Executive Director, and 10 individuals have served as the Chair of the Board of Directors. Currently, the Board of Directors has 16 members, four of which represent the Kansas Department of Agriculture, the Kansas State Department of Education, and Kansas State University's College of Agriculture and College of Education.

Kansas Foundation for Agriculture in the Classroom is a 501(c)(3) organization.