



**Kansas Foundation  
for AGRICULTURE  
IN THE CLASSROOM**



# **ANNUAL REPORT**

[www.ksagclassroom.org](http://www.ksagclassroom.org)

785-320-4350

[info@ksagclassroom.org](mailto:info@ksagclassroom.org)

**Investing in the future of agriculture through classroom connections.**

# YEAR AT A GLANCE

KANSAS FOUNDATION FOR  
AGRICULTURE IN THE CLASSROOM

**1,960+** Facebook likes

Lesson plan downloads **2,800+**

**46** Teachers attending virtual summit

Teachers receiving newsletters **1,200+**

**500+** Free lesson plan kits sent out

Teachers reached **1,800+**

**45,000+** Students reached

KDA new teacher grants **2**

## Agri-tag



To celebrate the 20th year of the Agri-tag on Kansas roads, we launched a brand new tag design! 1,100+ tags are throughout the state.



**1,700+** views of Virtual Agriland pages

## Mission

Connecting Classrooms  
to Kansas Agriculture

## Vision

Agriculture in every  
classroom, every day

# EDUCATOR INVESTMENT

KANSAS FOUNDATION FOR  
AGRICULTURE IN THE CLASSROOM



## Patricia Wolfe

2020 KFAC Janet Sims Memorial Teacher of the Year, was named a National Agriculture in the Classroom Excellence in Teaching About Agriculture award winner during the 2020 national conference in June.

Patricia teaches at Lakemary Center in Paola, Kansas, in their outdoor animal and garden learning center that they refer to as the Ranch. At the Ranch, students get the opportunity to learn more about animals and plants through hands-on learning. Students get to plant, weed, water, harvest and study plants in raised beds, a high tunnel, fruit trees, wildflower area, and a butterfly garden. Students also learn about chickens, pigs, goats, rabbits, horses and working dogs using hands-on, standards-based lessons and live animals. They learn how agriculture provides food, fiber and energy for people and animals.



Patricia also incorporates technology into many of her lesson plans. The unanimous favorite in her classroom is a unit learning about how technology is used in agriculture. Students practice beginning coding with the classroom robots. They then find out how these same skills may be used now or in the future in agriculture on a much larger scale. They are always discovering new ways that agriculture, science, technology, engineering and math go hand-in-hand, extending their learning much further than the classroom.



# EDUCATOR INVESTMENT

KANSAS FOUNDATION FOR  
AGRICULTURE IN THE CLASSROOM



## Kacie Lockyear

Kacie Lockyear is the 2021 KFAC Janet Sims Memorial Teacher of the Year. Kacie teaches Kindergarten at Country View Elementary in Winfield, Kansas. She is the 5th generation to live and work on her family farm, running a cow-calf operation and planting row crops.

One reason Kacie decided to get more involved in agriculture is because she noticed a huge gap between the farmer and the consumer. She started hearing things about food in a program one day that she knew were not true. So she started asking questions and quickly found out the majority of consumers had no clue what happened on the farm. She started working on solutions that could help to close the gap and quickly focused on adding agricultural education into her kindergarten curriculum. It started small with just an embryology unit, grew to weekly ag lessons, and last year grew to include Country View Farms.



*"My students and I are often learning together. The background I have of growing up and living on a farm currently has given me access to a lot of resources. If a student has a question I cannot answer, I know who to ask," said Lockyear.*

These students are lucky enough to have a farm at the school. Their days start with The Pledge of Allegiance and then chores. They have a steer, chickens, pigs, and we just sold our goats. The school also has raised garden beds that were built shortly before spring break last school year. Country View has a program called Pathways, which are an opportunity for students to engage in career exploration. Kacie runs the Ag Pathway. Students K-5 have the opportunity to sign up for this pathway if they are interested. Kacie brings in guest speakers to talk to the students about their jobs in agriculture.

# EDUCATOR INVESTMENT

KANSAS FOUNDATION FOR  
AGRICULTURE IN THE CLASSROOM

## 2021 Kansas Farm Bureau Foundation for Agriculture Excellence in Teaching Awards

This year, four teachers received our Excellence in Teaching award, sponsored by the Kansas Farm Bureau Foundation for Agriculture. The Excellence in Teaching awards are given to exemplary teachers who integrate agriculture into their classroom lessons and curriculum. Each of these winners will receive their choice of a \$600 scholarship to attend the 2021 NAITC conference or a \$200 gift certificate to purchase classroom supplies.



**Heather Brown**

Heather Brown is a second-grade teacher at Belinder Elementary School Prairie Village, KS. Brown purchased a tower garden for her classroom to teach students about aeroponics systems. She incorporated vocabulary, reading, writing, math and science into her tower garden lessons. At the end of the year, students enjoyed the benefits of their harvest with a salad party.

Marci Alford, a Kindergarten teacher, uses a variety of methods to help students learn about agriculture. She provides books for students to investigate on their own, delivers new information for them to use in making connections, and incorporates hands-on activities to enhance learning. Hands-on activities have included everything from crafts to planting crops and have been a game changer for her elementary classroom in Hickok at Ulysses, KS.



**Marci Alford**



**Kris Jenkins**

Kris Jenkins is a Pre-K teacher at Nickerson Elementary School in Nickerson, KS. Jenkins is fortunate in having the Kansas State Fair close to their school. She likes to start off every school year with a farm animal unit and a field trip to the fair where students get to see the animals up close. Her students have loved figuring out the importance of agriculture in their lives while learning about crops, gardens, and life cycles.

James Hammett teaches high school science at Maize High School where he deploys project-based hands-on learning to focus on real world topics in Kansas. He uses animal husbandry to teach the core principles of biology utilizing chickens, quail and catfish. Hammett has opened his students' eyes to the breadth of careers in agriculture which has increased agricultural class enrollment and steered students to the agricultural career pathway.



**James Hammett**

# DONOR INVESTMENT

KANSAS FOUNDATION FOR  
AGRICULTURE IN THE CLASSROOM

## 2020 Donors

These donors have made educational resources available through their generous support. We are very grateful for their investment in our mission. You can get your name on this list by investing today!

### Premier Partners (+\$25,000).



### Partner (\$10,000 - \$24,999).



### Supporter (\$5,000 - \$9,999).



# DONOR INVESTMENT

KANSAS FOUNDATION FOR  
AGRICULTURE IN THE CLASSROOM

## 2020 Donors

### Classroom Connector (\$1,000 – \$4,999)

First Presbyterian Church  
Jim Adams  
Central National Bank

Mid Kansas Cooperative  
Kansas Ag Bankers  
Midwest Dairy

### Advocate (\$500 – \$999)

BNSF  
Pete Henry Foundation  
Beachner Grain

KACD Aux  
Brandi Miller

### Contributer (<\$500)

Barb Meyer  
Cindy Epler  
Bret Henderson  
Steven Graham  
Jim Weaver  
Cindy Baldwin  
Mary Mertz  
Anne Jardine  
Doug Beech  
Jordan Hildebrand  
Carrie Ellis  
Robin Blume  
Laura Haverkamp  
Charles Sargent

Pederson Seed  
Rush Co Conservation  
David Whitney  
Bryson Haverkamp  
Judy Kimball  
Duane Dunn  
Keri Harris  
Cindy Colle  
Alan Parker  
Angela Beavers  
Joanne Pridey  
Bill Wood  
Jack Salava

# YOUR INVESTMENT

KANSAS FOUNDATION FOR  
AGRICULTURE IN THE CLASSROOM

**An investment in KFAC is an  
investment in the future of agriculture!**

## Donate

By giving on one of our annual giving days, your donations can be matched, however, any time is a great time to give! You can also give while you shop by using AmazonSmile!

Sporting an Agri-tag specialty license plate on your vehicle is a great way to support KFAC with an annual tax deductible donation while promoting agriculture every where you go!.

## Agri-tag

## Share

Sharing our posts on social media, sharing our mission with friends, and sharing our free resources with educators are all excellent ways to get involved with KFAC!

Volunteering to build classroom kits or information packets, spreading KFAC news, and encouraging donations helps KFAC broaden our reach.

## Volunteer

## Sponsor

Sponsoring projects and events is a great way to promote your business while helping KFAC fulfill its mission.

Supporting KFAC through your long-term financial planning is always appreciated. Contact us today to learn more about planned giving.

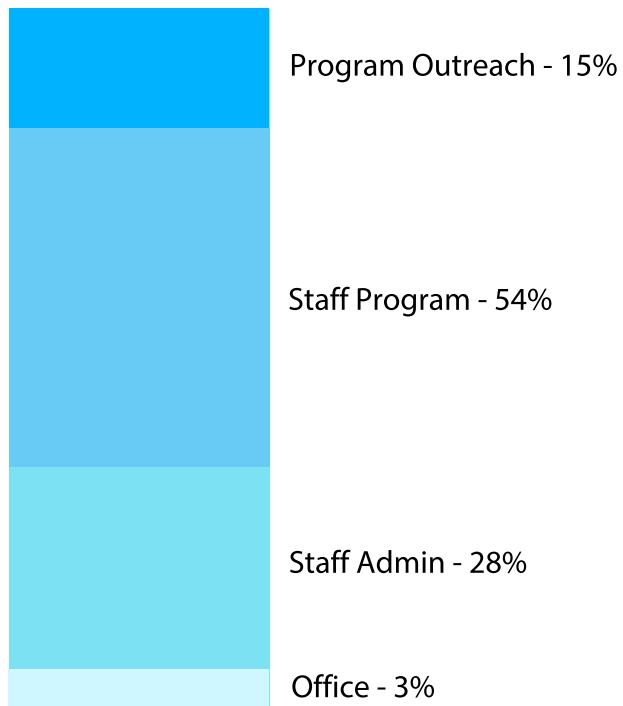
## Planned Giving



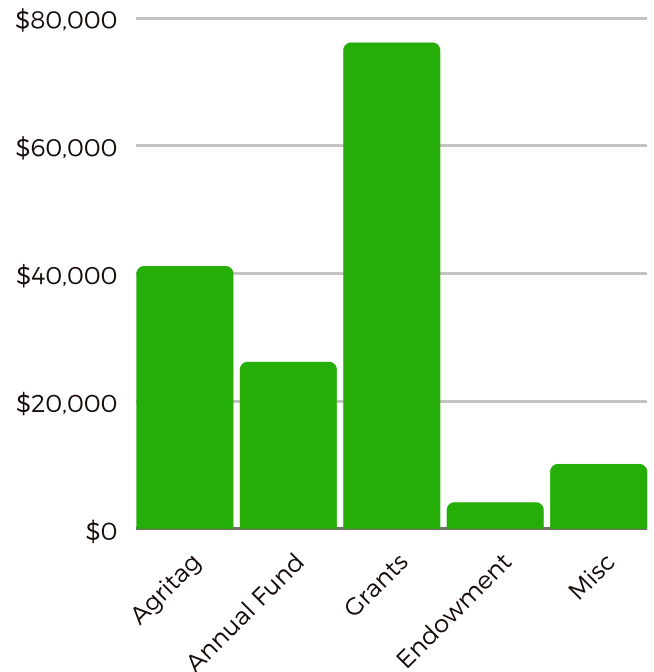
# FINANCIAL INVESTMENT

KANSAS FOUNDATION FOR  
AGRICULTURE IN THE CLASSROOM

## ANNUAL EXPENSES



## ANNUAL INCOME



**\$134,000**

Total Program Expenses

**\$223,500**

Total Operating Budget

	2019	2020
Total Giving	\$76,903	\$76,025
Total Grants	\$71,830	\$76,384

# DIRECTOR INVESTMENT

KANSAS FOUNDATION FOR  
AGRICULTURE IN THE CLASSROOM



Though I have only been with KFAC a short time as the Executive Director, the existing passion for our mission of “connecting classrooms to Kansas Agriculture” is evident! Meeting our partners and donors has been very motivating, and I very much appreciate the welcoming support I have experienced.

As the pandemic caused an immediate shutdown of the traditional delivery of education last spring and currently has many educators now teaching a hybrid of in-person and online at the same time, educators are in immediate need of virtual resources.

Now is an opportunity for us to expand our connection with teachers by providing quality resources that infuse agricultural concepts into the curriculum in a way that educates our youth about the value of agriculture and its impact on the quality of life. Investing in KFAC is investing in the future of agriculture through connecting with classrooms.

This generation currently in the education system is now at least three generations removed from direct agriculture experiences. Now is the time to influence change through our education systems. KFAC has responded to educators current need of virtual resources by collaborating with industry partners to produce a Virtual Agriland on our website. Virtual Agriland compiles a variety of resources including virtual tours, lesson plans and interactive activities.

KFAC will focus on enhancing our relationships with industry and increasing access to resources for educators with a website expansion project. We plan to provide current information on the agriculture industry, agriculture career exploration, instructional resources, and teacher professional development. We need your investment in the future of agriculture to expand our reach to more schools, more teachers, and more students to truly fulfill our mission of “connecting classrooms to Kansas Agriculture.” Together, we will make a difference in the agriculture industry by shaping the knowledge of our youth.

Sincerely,

A handwritten signature in black ink that reads "Nancy Zenger-Beneda". The signature is fluid and cursive.

Nancy Zenger-Beneda  
KFAC Executive Director

# BOARD & STAFF INVESTMENT

KANSAS FOUNDATION FOR  
AGRICULTURE IN THE CLASSROOM

## 2020 KFAC Staff

Nancy Zenger-Beneda, Executive Director  
Briana Jacobus, Communications and Marketing Specialist

## 2020 Board of Directors

Jim Adams, Chair  
Cindy Baldwin, Chair-Elect/Marketing Chair  
Brandi Miller, Secretary  
Jack Salava, Treasurer/Finance Chair  
Doug Jardine, Education Co-Chair  
Joanne Pridey, Education Co-Chair  
Angela Beavers, Member  
Doug Beech, Member  
Cindy Colle, Member  
Joe Minihan, Member  
Erika Poppelreiter, Member  
Charlie Sargent, Member  
Mykel Taylor, Member  
Russel Plaschka, Kansas Department of Agriculture Representative  
Ben Jones, Board of Education Representative  
Don Boggs, KSU College of Agriculture Representative  
Janine Duncan, KSU College of Education Representative

*"Agriculture is the most healthful, most useful and  
most noble employment of man."*  
**- George Washington**

# HISTORICAL INVESTMENT

KANSAS FOUNDATION FOR  
AGRICULTURE IN THE CLASSROOM

## ABOUT KFAC

Kansas Foundation for Agriculture in the Classroom is an affiliate program of Kansas State University and a member organization of National Agriculture in the Classroom.



**KANSAS STATE**  
UNIVERSITY

### **What is agriculture literacy?**

A person who understands and can communicate the source and value of agriculture as it affects our quality of life.

In 1981, the USDA established Agriculture in the Classroom with the endorsement of all living former Secretaries of Agriculture, the National Association of State Departments of Agriculture, the National Conference of States Legislatures, most of the Governors of the States, and the major agricultural organizations and commodity groups. Significant progress has been made through these partnerships to advance the mission of introducing agriculture in the classroom.

The Kansas Foundation for Agriculture in the Classroom was founded in 1982. In 1985, KFAC held the first summer graduate course for Kansas teachers, marking KFAC's commitment to providing teachers with agricultural experiences, credible resources and standards-based, hands-on lesson plans. Through the years, KFAC has been able to offer opportunities for teachers and students alike, including the Janet Sims Memorial Teacher of the Year Award and the Bookmark Art contest.

Since 1982, six persons have served as the Administrator/Executive Director, and 10 individuals have served as the Chair of the Board of Directors. Currently, the Board of Directors has 16 members, four of which represent the Kansas Department of Agriculture, the Kansas State Department of Education, and Kansas State University's College of Agriculture and College of Education. *Kansas Foundation for Agriculture in the Classroom is a 501(c)(3) organization.*