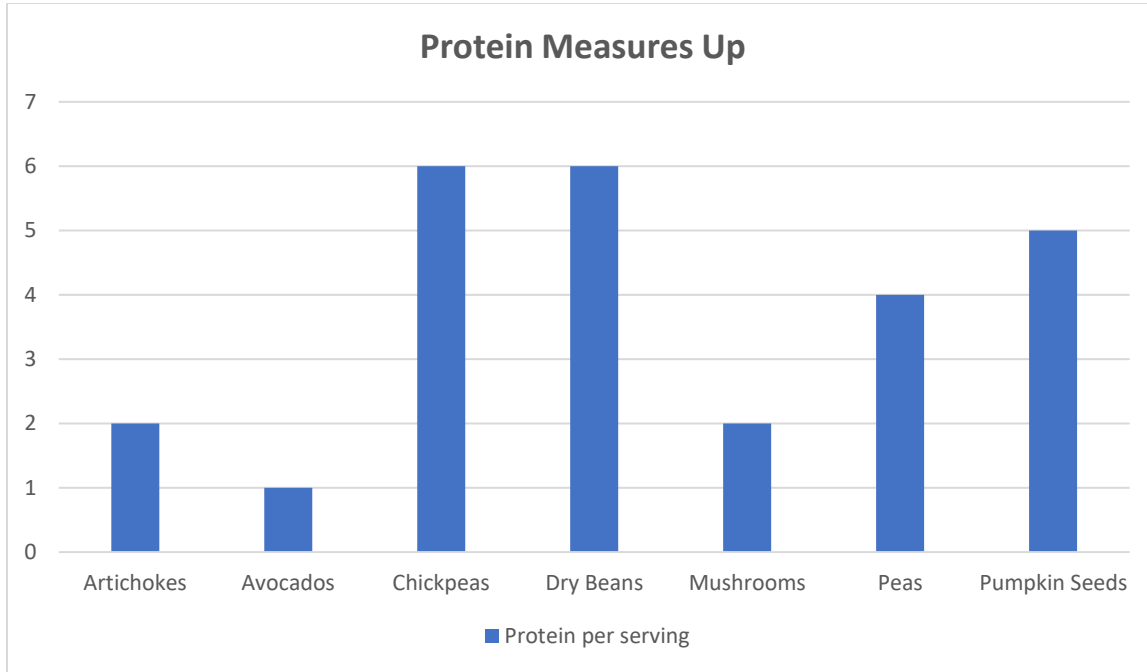
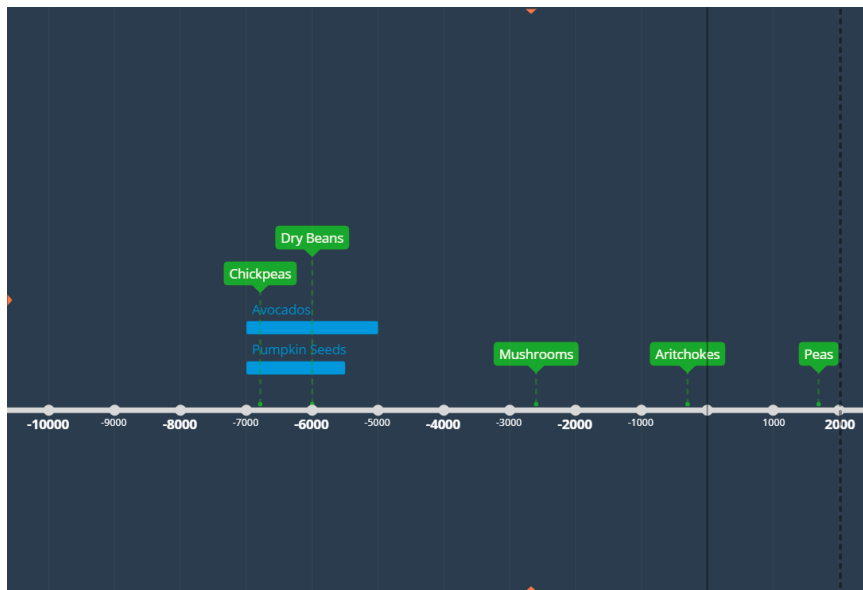


**Page 3**

*Protein Measures Up*



*Timeline*



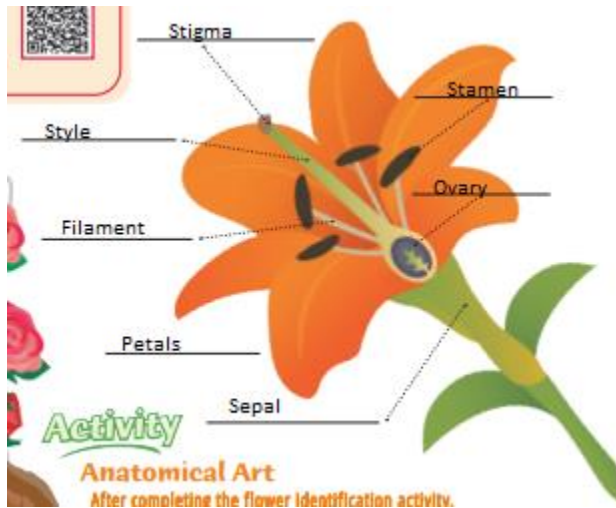
**Page 4**

*Pricey Plants*

1 pound = 16 oz; 1 oz = 28.3495 grams  
\$1,500 per pound / 453.592 grams = \$3.31 per gram  
\$3.31 per gram / 300 threads in gram = \$0.01 per thread

**Page 5**

*Flower Labels*



*A Rose by Any Other Name*

**A Rose by Any Other Name**

Plants have both scientific and common names. The scientific name is Latin and consists of two parts: the first part indicates the genus and the second part indicates the species. Common names are more like nicknames and can be one word or more. Some plants have multiple common names.

**Draw a line to match the scientific name to the common name.**  
 Hint: Often a variation of the common name can be found within the scientific name. Use the QR code to check your answers.

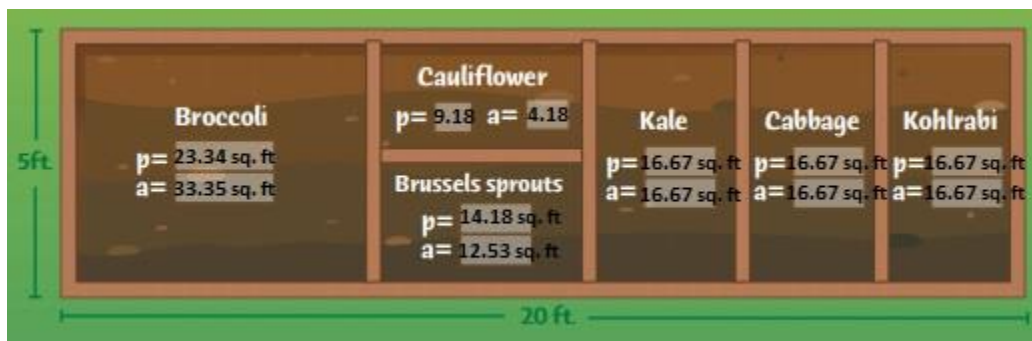
Standards: CC ELA: RF.3-5.3

Common Name	Scientific Name
Lavender	<i>Borago officinalis</i>
Borage	<i>Viola x wittrockiana</i> <i>Viola tricolor</i>
Daylily	<i>Rosa spp.</i>
Hibiscus	<i>Lavandula angustifolia</i>
Pansy	<i>Hemerocallis fulva</i>
Squash	<i>Hibiscus rosa-sinensis</i>
Rose	<i>Cucurbita spp.</i>

QR code

**Page 6**

*A Plot Divided*



Nutrition Match

**Nutrition Match**

Salsa is delicious to eat, but did you know some ingredients in salsa benefit your health? Draw a line to match each nutritional fact below to the ingredient growing in the salsa garden.

1. These fruits contain lycopene, an antioxidant pigment that may decrease the risk of certain cancers and heart disease.
2. This spicy root crop is a good source of vitamin C and dietary fiber.
3. This pungent bulb is a good source of vitamin B6.
4. This leafy plant provides the body with thiamin and zinc. Thiamin plays a critical role in the growth, development, and function of cells.
5. These colorful fruits contain large amounts of minerals and vitamins, especially vitamin C.

Standards: CA Health Education: Grade 4: 1.1.N, Grade 7: 1.2.N

Complete the bar graph to depict the **vitamin C content** in green peppers, tomatoes, onions, and red peppers. Use print or digital sources to find the nutrition facts label for each of these crops. Use the data to complete the graph.

Standards: CA Health Education: Grade 5: 1.2.N, 3.2.N, Grade 7: 1.6.N; CC Math: 5.MD.B.3

red pepper tomatoes onions green peppers

1. Plant s  
vary in ten  
optimal  
Crop  
htt

d  
mers  
eep  
o from  
shows  
rown in the  
and transformed  
ts we enjoy.

Drupe Crossword

Can you identify the California grown drupes using the crossword clues? *Hint: Check your answers using this QR code.*

**Across**

- A single gene gives this fruit fuzzy skin.
- More than 90 countries import this famous California nut.
- The seed is green.

**Down**

- Oldest known tree food.
- Bing is one of the most popular varieties.
- Also called prunes.
- These trees are evergreen - they do not lose their leaves in the fall.

Distributing Drupes

**Distributing Drupes:** An agricultural export is a commodity that is sold in a different country. California's top drupe export value is \$20.56 billion. Use information from the table below to calculate the percent of total drupe exports each commodity represents.

Drupe	Export \$	Top Exp. Country	Find the % of total
Almonds	\$4.483 Billion	European Union	21.80%
Cherries	\$160 Million	China	0.78%
Dried plums (prunes)	\$142 Million	European Union	0.69%
Pistachios	\$1.518 Billion	China	7.38%
Olives	\$40 Million	Canada	0.19%
Walnuts	\$1.370 Billion	European Union	6.66%
Peach	\$1.25 Million	Canada	0.01%
Apricot	\$19 Million	Canada	0.09%

## Drupe Identification



## Page 14

### Farmer's Market Activity Part 1



Did you know a variety of specialty crop items can be found at your local grocery store? Use this ad to determine the price of each item on sale.

<u>\$2.88</u>	1 lb. bag of almonds	<u>\$0.75</u>	Head of Lettuce
<u>\$3.25</u>	1 lb. bag of pistachios	<u>\$0.13</u>	Apples
<u>\$1.75</u>	1 lb. bag of dry beans	<u>\$1.50</u>	Strawberries
<u>\$0.13</u>	Carrots	<u>\$0.25</u>	Persimmons

## Farmer's Market Activity Part 2

With only \$7.00 to spend, can you purchase a bag of pistachios and a bag of almonds? How much more money do you need, or how much money do you have left over? If you purchase six carrots, three apples, and two heads of lettuce, what would be the total cost? If you have a coupon for an additional 20% off per pound of almonds, what is the total cost?

Standards: CC Math: 4.MD.A.2, 5.NBT.B.7, 6.NS.B.3, 7.RP.A.3

1. Yes.
2. \$0.87 leftover
3. \$2.67 total cost of carrots, apples, and lettuce
4. \$1.72 total cost per pound of almonds