



CALIFORNIA FOUNDATION FOR
AGRICULTURE IN THE CLASSROOM

*Planting
for the
Seeds
Future*



2009
Annual Report

Board of Directors

Kenneth Watkins III
Chairman of the Board
San Joaquin County

Martha L. Deichler
San Diego County

Debbie A. Jacobsen
Fresno County

James D. Johansson
Butte County

Bob O'Hollearn
Sacramento County

Joseph M. Peters
Sacramento County

Jane C. Roberti
Sierra County



Our Staff

Judy Culbertson
Executive Director

Kelly Benarth
Communications Coordinator

Mandi Bottoms
Curriculum Coordinator

Stephanie Etcheverria
Program Coordinator

Lyn Hyatt
Administrative Coordinator

Renee Hyatt
Web site Coordinator

Terri Salmond
Administrative Assistant

Brenda Trammell
Office Assistant

Resource Development & Special Events

Cathie Bradley
CJB & Associates, LLC

From Our Chairman

*Our message
is simple...*

More than 7 million California students are fed, clothed and housed with products grown right here on our farms, in our fields and within our forests.



California Foundation for Agriculture in the Classroom is dedicated to helping students and teachers across our great state gain an understanding of how agriculture provides the daily essentials necessary to make our society and our world function.

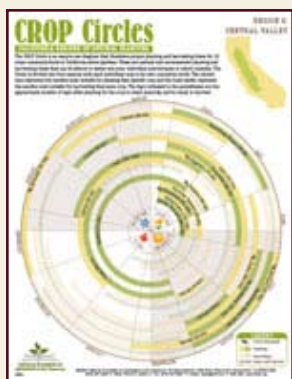
From the cotton in our jeans and the food on our tables, to our landscaped yards and playing fields, we all depend on agriculture. The survival of our vital industry depends on educating and encouraging the next generation of decision-makers. We do this by engaging students and educators in meaningful ways: developing and sharing unique classroom curriculum, supporting school garden efforts, spreading our message at local Ag Days, honoring outstanding educators, rewarding students who learn and write stories about agriculture and so much more.

Your support makes all the difference. Thank you for your contribution.

Kenny Watkins

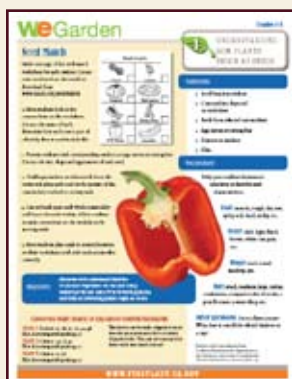
Kenny Watkins, Chairman of the Board

Accomplishments of 2009



In 2009, we developed a new resource to encourage educators and administrators to support the creation or revitalization of school gardens. We divided California's diverse geographic regions into six distinct areas and created a school garden planting guide for each region.

These **CROP Circles (California Regions of Optimal Planting)** are easy-to-use diagrams that illustrate proper planting and harvesting times for 18 crops commonly found in California school gardens. These are optimal and recommended planting and harvesting times that can be altered to better suit individual microclimates or school calendars.

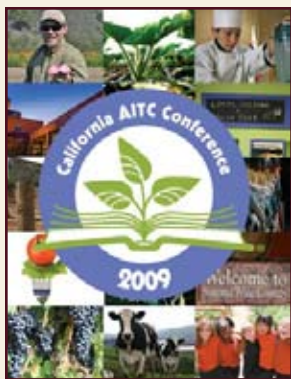


CFAITC was called upon by First Lady Maria Shriver's office to help establish the **"WE Garden in Capitol Park"** which was planted on the east steps of the state capitol in May. To help extend the hands-on, real world experiences learned in a garden back into the

classroom, we developed a series of "WE Garden" lesson plans and activities that demonstrate overarching garden themes, such as Nourishing and Nurturing Soil With Compost, Following Food from Farm to Fork, Tasting and Testing the Harvest, and Observing and Identifying Garden Pests. Adaptable for students of all ages, the "WE Garden" lesson plans meet multiple CA State Board of Education Content Standards for 1-6 grades.

Accomplishments of 2009

In October, teachers from 50 counties participated in the **annual AITC Conference** in Sonoma County, where field trips, guest speakers, workshops, make 'n' takes, resource sessions and networking opportunities encouraged educators to teach with agriculture! Out of the 270 participants, 162 were first time attendees, and evaluations indicated a very successful 2009 conference.



The Foundation played a key role in the statewide **Fresh Fruits and Vegetables Program (FFVP) trainings** in 2009. These 9 two-day collaborative trainings were a joint effort between the CA Department of Education and CA Department of Public Health's Network for a Healthy California. More than 700 educators were trained on how to support an increase of fresh fruits and vegetables on school campuses throughout the state in hopes of building healthy bodies and minds.



CFAITC's web site is growing! At an average of 17,300 visitors per month in 2009, **www.cfaitc.org** is home to electronic versions of all our lesson plans, free resources, and our interactive Kid's Corner: **kids.cfaitc.org** where students can play educational games with relevant ag topics such as heat illness tractors and machines. CFAITC is also connected on Facebook and Twitter!

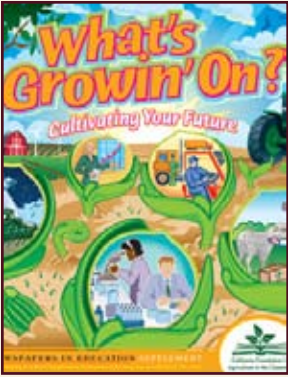


BECOME A FAN
ON FACEBOOK



FOLLOW US
ON TWITTER

Accomplishments of 2009



The 8th edition of our educational student newspaper, **What's Growin' On? Cultivating Your Future** focuses on agriculture related careers. The National Institute for Food and Agriculture (NIFA) provided funding for the development of the resource, and more than

500,000 copies were printed and distributed at events and as an insertion in several regional newspaper circulations.



Partnerships and outreach opportunities

continue to expand. Some of the many organizations we have worked with in 2009 include CA State Fair, CA School Wellness Conference, CA Science Teachers Association Conference, CA Association of Pest Control Advisers Conference, State FFA Convention, Ag Day LA, A



Garden in Every School Conference, Stockton Asparagus Festival, CA Agriculture Teachers

Association Conference, Western Fairs Association Conference, Network for a Healthy CA Conference, CA Council for Social Studies Conference, CSU Monterey Life Lab



Conference, Ag Day at

the Capitol, Chico State Ag Day, California Women for Agriculture Statewide Meetings, Girl Scouts of America's Ag Adventure, CA Master Gardener Workshops, multiple county fairs, and more.



Accomplishments of 2009

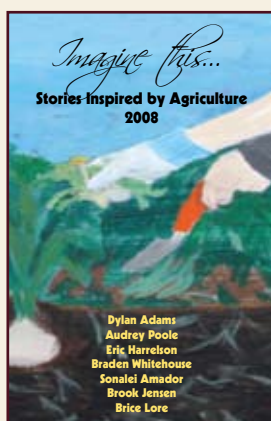
In 2009, Walmart signed on for the second consecutive year as the primary



sponsor of the Foundation's annual **Imagine this... Story Writing Contest**. More than 10,000 students in grades 3-8 researched and wrote stories involving California agriculture. The six winning student authors were selected and honored with special awards and recognitions. Winning stories were illustrated by high school art departments and professionally published in book form.



In July, Napa County state winner Dylan Adams was featured at a local Walmart Supercenter in American Canyon signing copies of the *Imagine this...* book during a California Grown campaign to encourage shoppers to buy locally grown products. In September, student authors, Eric Harrelson, Brook Jensen and Brice Lore also autographed and sold copies of the book among other California authors at the State Fair.



Accomplishments of 2009

The **Oreggia Family Foundation** donated \$20,000 to sponsor CFAITC's **Literacy for Life Teaching Awards** program. Arden Oreggia and his sister, Sabina, established the Foundation prior to their deaths to fund agricultural education endeavors and organizations. CFAITC's Literacy for Life Teaching Awards program recognizes California educators making an extra effort to incorporate agriculture into their curriculum.

David Menshew, a biology and forensic biotechnology teacher at James C. Enochs High School in Modesto received the 2009 Literacy for Life Teaching Award. Menshew has developed a multi-year, high-tech science program that now includes elementary and middle school students.



In partnership with the National Agriculture Science Center, Menshew provides free plant cell DNA extraction kits that allow students to perform investigations that meet state and national science standards.

Two other teachers awarded for their innovative use of agriculture in their classrooms in 2009 were **Brenda Lacey**, an agriculture teacher at Lone Pine High School in Inyo County and **Suzanne Squires**, an 8th grade science, health and art teacher at Los Olivos Elementary School in Santa Barbara County.

The 2009 Literacy for Life winners received awards, including cash prizes, and expense-paid trips to AITC conferences and the 2009 California Farm Bureau Federation Annual Meeting in Anaheim.

Success Story

I have witnessed thousands of students as they, many for the first time, register the importance of agriculture in their lives and better comprehend the science that supports it. By encouraging students at an early age to experience sophisticated, hands-on learning investigations, California Foundation for Agriculture in the Classroom is helping provide the much-needed relevance between concepts taught in the classroom, to students' everyday lives.



CFAITC is a truly remarkable organization and has played an integral part role in our forensic biotechnology program through their efforts to provide us with high-quality, ongoing agriculture teacher training and support.



Formed by their own efforts, observations and experiences, students recognize the need for a sound agriculture industry to assure our own personal security and success. My hope is that students see the necessity of the agriculture industry and realize the greatest job security lies in the agricultural products we simply can't live without.



David Menshew, 2009 Literacy for Life Teaching award winner

Financial Statements

Years Ended December 31, 2009 and 2008 STATEMENTS OF FINANCIAL POSITION

	2009	2008
ASSETS		
Current Assets	\$789,717	\$939,609
Endowment	84,463	84,463
Marketable Securities Investments	219,081	140,250
Property and Equipment, net	11,963	7,126
Total Assets	\$1,105,224	\$1,171,448
LIABILITIES AND NET ASSETS		
Current Liabilities	\$54,503	\$65,414
Net Assets:		
Unrestricted	882,050	961,543
Temporarily restricted	138,135	113,955
Permanently restricted	30,536	30,536
Total net assets	1,050,721	1,106,034
Total Liabilities and Net Assets	\$1,105,224	\$1,171,448

STATEMENTS OF ACTIVITIES

	2009	2008
CHANGES IN UNRESTRICTED NET ASSETS		
PUBLIC SUPPORT AND REVENUE:		
Contributions	\$706,177	\$859,415
Special event revenue (net of direct benefits)	106,758	125,229
Program fees	41,275	205,235
Investment income (loss)	43,100	(26,944)
Other income (net)	3,907	3,330
Net assets released through satisfaction of program restrictions	62,695	46,831
Total unrestricted public support and revenue	963,912	1,213,096
EXPENSES:		
Program services	746,253	1,084,584
Promotion and fundraising	210,853	201,749
Management and administration	86,299	59,215
Total unrestricted expenses	1,043,405	1,345,548
DECREASE IN UNRESTRICTED NET ASSETS	(79,493)	(132,452)
CHANGES IN TEMPORARILY RESTRICTED NET ASSETS		
Contributions	86,875	67,100
Net assets released from restrictions	(62,695)	(46,831)
INCREASE IN TEMPORARILY RESTRICTED NET ASSETS	24,180	20,269
DECREASE IN NET ASSETS	(55,313)	(112,183)
NET ASSETS, Beginning of Year	1,106,034	1,218,217
NET ASSETS, End of Year	\$1,050,721	\$1,106,034

Donor Support

\$150,000

California Farm Bureau
Federation

\$75,000

Wal-Mart Stores, Inc.

\$50,000

The James G. Boswell
Foundation

\$30,000

Oreggia Family
Foundation

\$15,000

California Teachers
Association
Jim Hicks and Company

\$10,000

Chiquita Brands
International

Bob Johnson
Rabobank, N.A.

Syngenta Crop
Protection

United States
Department of
Agriculture

Wells Fargo

Edwin and Jeanne
Woods Family
Foundation

Zenith Insurance
Company

\$7,500

CALAMCO

California Milk Advisory
Board

California Walnut Board
and Commission

Farm Credit

American AgCredit
Farm Credit West

Fresno Madera Farm
Credit

Northern California
Farm Credit

\$5,000

Agriculture in the
Classroom Consortium

Alliance for Food and
Farming

Bank of America

CAPCA

California Beef Council

California Beet Growers
Association

California Department of
Food and Agriculture

California Egg Industry
Association

Fujishige Farms, Inc.

Kenneth Groefsema
Ranch

Olive Hill Greenhouses

Paramount Farms

U.C. Hansen Trust

\$2,500

Blue Diamond Growers

Brocchini Farms, Inc.

California Alpaca
Breeders Association

Cota Cole & Associates

Farmland Management
Services

The Bertha and John
Garabedian Charitable
Foundation

R. Gorrill Enterprises

Eva Kasparian

Monrovia Nurseries

Nurserymen's Exchange

Orange County Farm
Bureau

Peter and Amelia
Tognazzini

\$1,500

The Agricultural Network

AMVAC

Bank of the West

The Henry W. Bull
Foundation

Button & Turkovich

California Asparagus
Commission

California Authority of
Racing Fairs

California Cantaloupe
Advisory Board

California Grown

E. & J. Gallo Winery

Lake Road Grizzly Ranch

The Lyman/Tremont
Group

Parsons Farms

San Joaquin Tomato
Growers, Inc.

Union Bank

Vino Farms, Inc.

Yosemite Farm Credit

\$1,000

Alesso Family Trust

Anthem Blue Cross

Bell-Carter Foods, Inc.

Stephen Beneto
George and Ruth

Bradford Foundation

Bronco Wine Company

Elly Button

Cal-Bart Orchards

California Agricultural
Aircraft Association

California Agricultural
Leadership Foundation

Class 38

California Alfalfa and
Forage Association

California Association of
Winegrape Growers

California Canning Peach
Association

California Cherry
Advisory Board

California Fresh Carrot
Advisory Board

California Grape and
Tree Fruit League

California Poultry
Federation

Clauss Dairy Farms

CoBank

Alan Connor

Crop Production Services

CWA, Coachella Valley

Martha and Richard
Deichler

Ecke Family

Health Net of California

Robert Henderson

Hollandia Produce, Inc.

InterWest Insurance

Debbie and Ray
Jacobsen

Kallisto Greenhouses, Inc.

Keithly-Williams Seeds

Land O'Lakes Foundation

Al Mar Ranch

MCM Poultry Farms

Mid Valley Ag Services,
Inc.

Joseph and Shirley
Mohamed

Doug and Misha
Mosebar

Jack and Sherry Olsen

Panoche Water District

Pesticide Applicators
Professional
Association

Placer County Farm
Bureau

R. A. Davis Commodities,
LLC

R & H Paul, Inc.

R. C. Farms

Garland and Brenda
Reifer Family
Foundation

Riverbend Dairy

David and Jane Roberti

Elio and Joy Rodoni

San Benito County Farm
Bureau

San Joaquin-Stanislaus
Cattlemen's
Association

Rudi Schulte Family
Foundation

Scott Bros. Dairy Farm

Claudia and Richard
Smith

Souza's Dairy, Inc.

Ann and Ellis Stephens

Sutter Home Winery

Maureen Tolson

Tulare County
Cattlemen's
Association

United Agribusiness
League

Van Vleet Enterprises, Inc.

Ventura County
Community Foundation

Paul and Deborah
Wenger

Western Plant Health
Association

\$500

Allied Grape Growers

Mike Anderson

Calavo Growers of
California

California League of
Food Processors

California Olive
Committee

Campbell Timberland
Management, LLC

CAPCA - Central Valley
Chapter

Central California
Irrigation District

CJB & Associates, LLC

Richard Cogswell and
Ester Saunoras

Crane Estate, Inc.

CWA, San Joaquin
Chapter

Cypress Abbey Company

D'Arrigo Brothers
Company

John Deere Water
Technologies

Demler Egg Ranch

Diamond Foods, Inc.

Jean Domenigoni

Domenigoni Bros. Ranch

Margaret Duflock
Harry and Virginia
Falconer

R.M. & Carolyn B.
Farnsworth Trusts

Fetzer Vineyards

Filipponi & Thompson
Vineyards, Inc.

Lorraine Finch

Mike and Jeanette Fitch

Foster Farms

Garber Poultry Farms

GE Foundation

Giorgi Ranches

Donor Support

- Terry and Jo Ann Gulmon
Virginia Hammerness
Hofer Ranch
Hoit of California
Herbert and Virginia
Holzapfel
Peter and Penny Jelito
Clif and Barbara Johnson
LangeTwins Partnership
LCP Services, Inc.
Fred and Irene Leavitt
Los Angeles County
Farm Bureau
Richard Miner
Graydon and Virginia
Nichols
Oak Tree Charitable
Foundation
Mike and Mary Orradre
Victor Pankey
Parreira Almond
Processing Company
Raisin Bargaining
Association
Ranchers Cotton Oil
Elizabeth and Robert
Reniers
Rubin Seeds, LLC
Michael Rue
A. Sambado and Son,
Inc.
San Joaquin River
Exchange
San Luis Obispo
Community Foundation
Seminis Vegetable
Seeds
J.R. Simplot Company
South Valley Farms
Stanton Lange Vineyard
Mgmt.
Target Specialty
Products
Turley Wine Cellars
Vaquero Foundation
Gary Veeh
Western Canal Water
District
Edwin and Jeanne
Woods
Billie Zanker
- \$250**
Agricultural Council of
California
James Ahlem Dairy
Thomas Avila
Bank of the West
Dale and Gene Bauer
Bavaro Ranches, Inc.
Harry and Helen Blythe
Bowles Farming
Judy and Richard Brick
Budles Farms
Nicholas Burns
California Farm Water
Coalition
Frank and Barbara Carl
Carriere & Sons
Cattle Warehouse
Michael J. Cavalletto
Ranches, LLC
Clendenin Orchards
William J. Codiga Family
Foundation
Crane Mills
CWA, Lake County
D & E Jersey
Steven G. Dahm
Den Hartog International
Farms
Daniel and Dee
Desmond
DHR Farms
Bill Diedrich
Norma and Paul Dole
- Empresas Del Bosque,
Inc.
Dr. Michel and Kathryn
Etchebarne
Eureka Seeds, Inc.
John Fedors
James Finch
Firebaugh Canal Water
District
Foppiano Ranch
Partnership
Carol and Cornelius
Gallagher
GCM Farms
Robert Giacomini Dairy,
Inc.
A. L. Gilbert Company
Glen and Janet Gofo
The Gualco Group, Inc.
Harbinson Ranch LLC
Jim Harp
J.D. Heiskell & Company
HMS Agricultural
Corporation
Anne Hollister
Husman Farms, Inc.
JD Farms
Edward Johnson
Kauluwai Orchards
Keenan Farms, Inc.
Dawn and Wayde
Kirschenman
Joann Knight
Ron LaGrande
Stan and Sheri Lester
Jean and William Lockett
Mackey & Mackey
Insurance
Madera County
Cattlemen's
Association
Marianne and Rick
Madariaga
Edward and Mimi Maring
Ed McLaughlin
The McNeilly Family Trust
Mendes Family Farms
Menghetti Properties
Clint Miller Farms, Inc.
Minturn Huller
Cooperative, Inc.
Modesto Irrigation
District
Mark and Laurie Moore
Mount Professional
Services
Chester Murphy
Michael J. Neal
Viticultural Services
Oak Knoll Ranch, LLC
Ocean Mist Farms
Bob and Jane O'Hollearn
Mark Osterkamp
Ranches
Peter Osterkamp
Ranches
Pacific Coast Producers
Steve and Sharon Park
Pescador Farms
Peters Ranch
Pioneer Equipment Co.
Plantel Nurseries, Inc.
Hazel and Nils Pulz
Pump House Ranches,
Inc.
Rue & Forsman
Gary and Yvette Sack
San Benito Cattle
Company
Scheid Vineyards
John Scheuber
David Schwabauer and
Michael McMahan
Brad and Sally Scott
Seus Family Farms
Spectrum Technologies
R.C. Starn and Sons
- State Compensation
Insurance Fund
Susan and Joseph Stone
George Swaner
Carlo and Catherine
Tabellario
Frank and Tina Taggart
Donaldson and Norma
Taylor
Henry Te Velde
Tejon Ranch
Carter Thacher
Bill and Laura Tower
Triple S Farming LLC
TS&L Seed Company
Ber Van Dam Dairy
Al Vangelos
Van Ruiten Bros.
Veenstra Farming
Vercauteren Custom
Harvesting, Inc.
Verdegaal Brothers, Inc.
Bob and Carilyn Vice
William Wallace
Water Education
Foundation
Kenny and Molly Watkins
Eva Weiszbrod
Paul and Diana Wells
John Wiley
Alfred Williams
Janet and Earl Williams
Winton-Ireland, Strom &
Green Insurance
Michael Wolf
Nadine and Norman
Yenni
Donna and Robert Young
- Up to 249**
3M Cattle Company
A & J Family Farms, Inc.
A & W Farms, LLC
Acquistapace Farms, Inc.
Dorothea Adams
John and Judy Adams
Mike Adian
AgReserves, Inc.
Agriculture Industries, Inc.
Louise Ahart
Ahern International
Seeds, Inc.
James and Patricia Ahle
Ainley Ranch
Air-Way Farms
Brenda Albini
Martin Albini
Alfaro Farm Labor
Contractor
Beverly and John Allen
Almendros, Inc.
Almont Orchards
Alvarez Farms, Inc.
Laura Amaro
Nina Ames
Dwight and Toni
Anderson
AO Ranch
Helen Arnaudo
Arrowhawk Ranch
Harry and Edith
Aschwanden
Alice Astafan
Cynthia and Robert
Atkins
Lewis Aukeman
Azevedo Dairy, Inc.
Randall and Glenda
Azevedo
B & E Ranches
B & L Farms
Bacchetti and Silva Dairy
Bacome Insurance
Agency
William A. Baggett
Farming
Richard Baglione

Donor Support

- Jackie Baker
Ned and Karyll Baker
Chuck Bakers Ranch
Evo Baldocchi
Baldwins E P Ranch
Bert & Jackie Ballatore
Clif Bar Family
Foundation
Louis and Jeanette
Barbagelata
Benito and Dorothy
Barboza
Manuel and Alice
Barcellos
Barkhouse Ranch
Barnes Family Trust
William and Eldora
Barnes
Jean Barr
BASF Corporation
Anna and Venri Battji
Scott Bauer
Joseph Bautista
Lillian Bava
Pauline Bavaro
Kenneth and Michele
Bays
Beckstoffer Vineyards
Stephen and Nancy Bell
William Bell
Belzane Ranch
Bengard Ranch, Inc.
Sharon Benzen
Mary Bergen
Bernacchi & Sons Seed
Sales
Ron and Cheryl Bertao
Rose Bettencourt
Bettinelli Vineyard
Management
Harold Biaggini
Rae and Wayne Biehler
Big Valley Seed
Company
Kenneth and Virginia
Birdwell
Don and Frances Bishel
Jeffrey and April Bitter
Robert and Connie Bitter
Blackwell Investment
Company
Patricia and Roger
Blanchard
Blankinship & Associates,
Inc.
Roxana Blanks
Fred Bliss
Bloemhof Custom
Harvesting, LLC
Bob Brandi Honey and
Farming
Wilma Boggs
Virginia Bolstad
Margarete and Richard
Bonner
Camilla Bonnickson
Wm. Boos & Co.
Border Valley Trading,
Ltd.
David Borges Farms
Reid Borgwardt and
Eileen O'Farrell
Patricia Borison
Richard and Myriam
Borst
Peter Botto
Bowman Farms, Inc.
Sarah Bowman
Dr. Francine Bradley
Mike and Kim Bradley
Brandt Enterprises
Tony Brady Jr. Goat
Dairy
Virgil and Dorothy Brandt
Richard Brann
Richard and Cynthia
Brockmeyer
- Robert Brunker
Bryant-Christie, Inc.
Harry and Joan Buckel
Peje and Lorraine
Bulthuis
Herbert and Barbara
Bundesen
Bunker Hill Ranch
Burford Farming
Company, Inc.
Bob and Mary Burger
Gary V. Burrows, Inc.
Deborah Busch
Lewis H. Butler
Butte County Rice
Growers Association
Butte Creek Farms
Butte Equipment Rentals,
Inc.
Linda Byer
Geri Byrne
C J Farms
Cache Creek Vineyards
LLC
Cal-Coast Irrigation
Calcoq, Ltd.
California Dried Plum
Board
California Family Foods
California Safety Training
Corporation
John and Jill Callis
Calterras, LP
Carl and Eleanor Calvert
Bruce Cameron
Byington Campbell
Campstool Ranch
Capay Canyon Ranch
Capay Gold Olive Oil,
LLC
Fernando and Maria
Cardoso
Cardoza Commercial
Farming
Gary and Nora Carlin
Bobby and Evelyn
Carlisle
Brooke Carlson
Carrari Rancho Alamo
Bill and Jennifer Carriere
Clyde and Rosalie
Cartwright
Roderick and Claire
Carty
A. J. Carvalho & Sons
Patti and Peje Cassinerio
Paul and Pamela
Castaneda
Catlett Family Farms
William Catlin
Catrina Farms
Albert and Sue Catrina
Alfred and Elaine
Cavaletto
Jon Caywood
CDK Agriculture, Inc.
Mindy and Wayne
Cecchetti
Central Coast Propane,
Inc.
Dalvir and Kamaljit
Chahal
Henry Chan
Wallace Chan Farms
Bill and Carol Chandler
Chapin Brothers
Pejer and Jode
Chevalier
Lynn G. Chiapella
Chiappe Farms, Inc.
Steven Christenson
Joel and Judith Church
Carol and Michael
Churkin
Cilker Orchards
Circle C
- Clemente and Mary
Ciftoni
Michael Claeys
Harvey and Anna May
Clark
Walter L. Clark &
Associates
J. Clausen Farms, Inc.
Clearview Ranch
Clearwater Color
Nursery
Cleveland Farms
Clockspring Vineyards
Thomas and Helen Cloer,
Jr.
Duane and Joan Close
Coburn Ranch
James Coburn
Ned and Valerie Coe
Marv Coit
Cold Creek Ranch
Cole Ranch
Margaret Ann Cole
Coleman Farming
Company, LLC
College City Warehouse,
LLC
College Lake Grower &
Shipper
Richard Collins
Colombini Farms
Colusa Bean Growers,
Inc.
Colusa Industrial
Properties
Company B Confederate
States Marine Corps
Conant Orchards
Joe and Josina Conant
Conners Well Drilling
Jerry L. Conrow &
Company
Gary Cooper
C. Joyce Corcoran
Karen Corda
Frank and Elaine Correia
Charlene Corrin
Cynthia Cory
Philip and Jean
Cosentino
William and Barbara
Cotter
James and Mary Cowan
Cowles Berry Farm
Bill Cox
Charles Cox
Coyote Valley Nursery,
Inc.
James and Joan Craig
Amy and Keith Crain
Deborah Creighton
Crinklaw Farm Services
Charles and Earlane
Crivelli
CRM Farms
Linda Crockett
Carl Crooker
Jim and Judy Culbertson
Sid and Vaudine Cullins
Steven and Theresa
Cultrera
Cunningham Ranch
Incorporated
CWA, Sacramento Valley
Chapter
D & D Ag Services, LLC
D. Campos, Inc.
D.A. Spangler Farms
Eugene Dahm
Dairy Institute of
California
Joan Dal Porto
Bernard Damele
Allen and Joyce
Dangermond
RachelAnn Daniel
Andrew Dasso, Jr.

Donor Support

- Frank De Benedetti
De Benedetto Ag
John and Helen De Boer
Barbara and Jim de
Fremery
John De Groot & Son
Peter and Carolyn
Degroot
William DeJong
Del Puerjo Farms
Delano-Earlimart
Irrigation District
Mary and W.C.
Delamater
Darrell and Pat Delerio
Dellavalle Laboratory,
Inc.
F.V. Tara Dawn, Inc.
Delo Electric
Andrew Delucchi
John De Martini
Arthur and Carole
Dendulk
Stanley and Alma Denner
De Pue Warehouse
Company
Michael DeRee Ranch
George Dersch
Steve De Valentine
Farms
Kevin Devine
Kristin and Ronald Dick
Robert and Jean Dick
Dinelli Farms
Steve Dinelli Farms
DM Color Express, Inc.
Michael Doherty
Dohi Farms, Inc.
Tony Domingos Farming,
Inc.
Helene and Robert Dorris
Kelly and Shannon
Douglass
Tom Dowd
Andrew Dubois
Claire and Mark Duguid
Eugene and Janet
Duncan
Richard Duncan
Gary and Mary Dunlap
Dustin Timothy Farming
Petra and Gertrude
Dykstra
Elmer and Jolita Eckart
Lizbeth Ecker
Mavis Eckhoff
Edwards Farms
Bob Edwards
David and Mavi Edwards
El Katrina Dairy, Inc.
Sam D. Elias, L.P.
Bryan Elkins
Thomas and Rose Ann
Ellis
David J. Elliot & Sons
Ellwood Ranch, Inc.
Pam Emery
Gerald and Rose Engler
Frank Enos & Sons, Inc.
Richard Enns
Aaron and Anne Epstein
Arvell Erickson Orchards
Jeffrey and Mary
Erickson
John and Toni Erickson
Erlanson Farms
Violet Ernst
Georgianne Errotabere
Erwin Farms & Nursery,
Inc.
Escalon Livestock Market
Anthony Escover
Kathryn Estomo
Louie and Barbara
Etcheberria
Eutenier Ranches
Jackie and Roger
Everett
Executive Landscape,
Inc.
Exeter Veterinary
Hospital
F & L Farms Trucking,
Inc.
F & P Giannecchini
Farms, LLC
Fairless Family Limited
Partnership
Bernie and Dorothy Faist
Marilyne and Mark
Fantozzi
David and Joyce
Fanucchi
Roy Farkas
Patrick and Gloria
Feeney
Gene and Joanne Fenn
Ferguson Farms, Inc.
Fernandes Dairy
Karen and Rick Ferrier
Field Stone Winery &
Vineyard, Inc.
Alice Fieth
Joseph and Peggy Finelli
Dana and Susan Fisher
John and Nadine Fisher
Melinda and Kenneth
Fleming
Clinton Folger
Fontes Farms
Foothill Tropicals, Inc.
Forest Seeds of
California
Edward and Katherine
Franklin
Fresno Equipment
Company
John and Mary Fricker
Judith Friend
Fry & Son, LLC
Ed Fry
John A. Fugazi Farms
Carl and Connie Funke
Evelyn and Raymond
Funke
Darlene Fuso
G & G Farms
Louis Galli Farms
Gambini Farms
Doris Gambonini
Javier Garcia
Jack and Tricia Gardella
Gardencraft
Diane Garfield
Garino-Deegan Ranch
Bob and Devere Garner
John and Sharon Garner
Ida and William Garrett
Garsino Ranch
Madeline Garzelli
Frances Gates
Bill and Susan Genasci
Douglas Geneux
Lilia and Don Giacomazzi
Gary and Julie Giampaoli
Deno Giannandrea
Dan and Jackie Giesing
Robert and Muriel Gill
Gillespie Insurance
Services
Bryan and Beverly Gingg
Beverly Ginochio
Ronald and Sally
Ginochio
Carol and Edwin
Giovannini
Giusti Ranch
Gizdich Ranch
Goecken Family
Partnership
Golden Groves Ranch
Company
Golden Valley Farms
Ella and George Gomes
Gordon & Gordon
Joe Gotelli and Sons
Graffigna Fruit Company
Gragg Canyon Ranch
Nancy Gragnani
Brent Graham
Green Paradise Farm
Delia Green
George Greeott
Lyndell Grey
Grieb Ranch
George Griset
Francis and Judy Groen
Kees and Sue
Groenewegen
Grove Brothers
James Groverman
Growers Crop Consulting
James Gualco
John and Lisa Gubler
Leslie and Dorothy
Guengerich
Dr. Daniel Gueettinger
Gwerder Family Trust
Hafenfeld Ranch
Linda and August
Hagemann
Haley Farms, Inc.
John Hall Trust
Burrows Hamilton
Elaine and Neil Hamilton
Leonard and Britta
Hammer
Hammonds Ranch, Inc.
Leon and Betty Handel
Robert Hansen
Velma Hansen
Robert and Carol
Hardison
Harmony Egg Ranch
Webb Harpe
Nancy Harris
Harris Moran Seed
Company
Myra Harrison
Laurie and Robert Hart
John Hasbrook
Fred Hayes
Robert and Joyce Hayes
Clayton and Paulette
Haynes
Betty Hayward
Edwin and Rose Hector
Thomas Heenan
Heitz Wine Cellars
Mary Hemenway
Elizabeth Henderson
Ruth Anne Hendricks
William and Donna
Hendrix
Jacob and Annmarie
Hendryx
Brent and Frank
Hennefer
Hennigan Farms
Heringer Holland Land &
Farming Co.
Howard Heritage
Herrick Vineyards
Clinton Heuring
Margaret Hidahl
George and Janice
Higashi
Janet Hildebrand
Mahlon and Claire Hile
Allen and Marilyn Hill
Nancy and Wayne Hine
Donald and Ellen
Hodgson
Carl and Elizabeth
Holdener
Tim Holliday and Sara
McCarter
Bill and Evelyn Holve
Fred and Judy Honore
Frank and Phyllis Hooper

Donor Support

- Hoot Owl Creek
Vineyards
Sumiyo and Natsuko
Horio
HRD Ranches, Inc.
Nancy and Robert Huey
Darlene and Walter
Huitema
Charles Hulbert Farms
Herbert, Lawrence and
Peje Hunn
Patsy Hunrick
Huter Farms
Edgar and Sandra Ilesley
Larry and Phyllis Isheim
Kuniko Ishii
Stan Iversen
J & T Cattle Company
J Bar S Ranch
Jeanne, Milton, and
Randall Jasper
Daniel and Shirley
Jauregui
JC-CP Farm, LLC
Thomas and Betje
Jenkins
Richard and Rebecca
Jenness
Jewell Ranch, LLC
A. W. Johnson and Son
Chris and Yuliya Johnson
Elsa Johnson
Geri Johnson Crop
Insurance Agency
Glenda and Karl Johnson
Richard Johnson and
Associates, Inc.
Richard and Sandra
Johnson
Robert and Florence
Johnson
Chris and Shawna Jones
Chuck Jones Flying
Service, Inc.
Mary Pat and Don Jones
Violet Jones
James and Cissy Jordan
Joseph Bacchetti Farms
Joughin Ranch
John and Janet
Kabashima
Harry Karle
John H. Kautz Farms
June Kawamura
Edward and Winifred
Kearley
Anthony and Elizabeth
Keese
Keith's Family Food
Center
Kelley Groves
Richard and Jeanne
Kelley
Kemble Cotton Services
Harold Kempen
Michael Kenefick
Kim Kersten
Bob Kirchner
Kirschenmann Bros.
Kitchens Gardens
Kleen Globe, Inc.
Valeja Koller
Onalee Kosfer
Ard Kozono
Jack and Verna Krout
Margaret Kullberg
L & L Farms
L and R Mussi Farms
Laguna Farms
Dorothy Laine
Lakeside Organic
Gardens, LLC
Edythe Lambert
Jean Landeen
J.C. Lansdowne
Edgar and Elisa Lantz
Jason Larrabee
Larrobe Vineyards
Ronald Laub
Henry and Bree
Laubacher, Jr.
La Valle Sabbia, Inc.
Lavio Dairy
Dolores Lawson
Leal Family Limited
Partnership
Bernardine Leal
Leavens Ranches
Joanne Ledbetter
Elaine Lederer
Albert and Patricia Lefko
Esther Lehmer
George and Nancy
Lehnhoff
Lehr Brothers, Inc.
Max Leimgruber
Douglas and Marian
Leisz
Flo Lenz
Howard and Rachel
Lewis
Bonnie and Ralph Lichty
Roger and Linda Limberg
Ken and Dorothy
Lindauer
The Little Farm
Libby and Patrick
Littlefield
Live Oak Farms
James Lloyd-Butler
Family Partnership
Logan Creek Farms
Barbara Lackey
Jean and William Lockett
Steven Lockett
Donald Lohman
Long Ranch, Inc.
Frank Long
Irene and William Long
Lindy Long
Longview Ranch
Doris Lucas
Joseph and Judy Luis
Bruce Lundquist
Barbara and Leo Lynch
Waymon Lynch
Lyon Ranch
Lyons Investments
Maben Farms
Ed and Emily Maberto
Frank Macdoran
Machado Farms & Dairy
Fred and Maxine
Machado
J. L. Machado Farming
Mel Machado
Machinery & Equipment
Co., Inc.
MacLean River Ranch
Madsen Farms
Magneson Dairy
Major Farms, Inc.
Karen Malia
Kathy and Sam Mann
Manna Ranch
Tony and Barbara
Mansfield
J. Marchini Farms
Linda and Marc Marchini
Lillian Marciel
Dena and Louis
Mariantal
Marin & Mason
Partnership
Joel Maring
Dr. Pamela Marrone
Marthedal Farms
Bob and Rita Martin
Bruce and Connie Martin
Duane Martin Livestock
Barbara and Joseph
Marzen
Masami Cattle Ranch
Donald and Mary Mason
Marlea and Bobby
Massey
Douglas D. Mathews
Ranch
Edwin Matsumoto
Koichi Matsumani
Rich and Roberta
Matteis
Richard Maulhardt Ranch
Patricia McArthur-Rue
Andrew McBride
Donald and Barbara
McClish
Chester and Olive
McCloskey
Arlene and Ronald
McClure
Charles McClurg
McCorkle Farms, Inc.
John McCormack Co.,
Inc.
McCracken/James Family
Farms
Emma and Homer
McCrary
William and Aileen
McDonald
Terry Mc Duffee
Tina McEnroe
McFarlane and
McFarlane
Milton McGiffen
McKellar Agricultural
Group
Darline and James
McLeod
Lester McNall
McQuoid Well Drilling
John Melendy Family
Trust
John Mellott
Ralph and Melinda
Mendelson
Bonner Mendez
David Mendonca
Meritage Management
Mike Merkley
David Merrill
Greg and Patty Merwin
Ralph and Fleeta Metcalf
Mettler & Son, Inc.
Don and Kathlin Meyer
C.F. and M.M. Michaelis
Arthur and Sandra
Milberg
Milk Made Dairy
Cathy and Geof Miller
Curtis and Shirley Miller
Joseph and Marjorie
Miller
Mary Miller
Thelma Mills
Millville Grange
Art and Thena Mimler
Clarence and Rosalie
Mineetti
Miramon Estate
Vineyards & Winery,
Inc.
Tim Miramontes Farms
Ken and Charlotte
Mitchell
Tamaye and Yoshiharu
Mizuotani
Thomas and Laura
Moiola
E.R. and Debra Moles
Montpelier Farming
Corporation
George Montross
Albert Moorhead
Moran Ranch
Jeff Moresco Farms
Barbara Moriel
Fukiko Morita
Morris Dairy Farms
Bill and Sharon Morris

Donor Support

- Howard and Juanda Mourn
Sidney and Marjorie Muck
Jennifer and John Muhliner
Marianne Muirhead
Joe Muller and Sons
Joseph and Marie Muller
Loretta Munger
Mura Nursery
Paul and Virginia Muradian
Barbara Murphy
Erna Murphy
Bettyjean Murray
Hope Musser
Eugene and Lilia Muzio
Brady Myers Insurance Associates, LLC
Nagel Nursery
John Nash
Betty Nehrig
Deanna and George Nelson
Nicholas Calf Ranch, Inc.
Nicolaus & Company
Sue Ann Nichols
Clarice and Richard Nielsen
Erick Nielsen Enterprises
Sam and Arlene Nielsen
Ninomiya Nursery Company
Alice Nishimoto
Edward and Frances Nishio
Joanne Nissen
Frank and Juanita Nobriga
Norene Ranches, Inc.
Matthew Norene
Norman Crow Farming
James and Laurie North III
Diane Norton Insurance Agency
Jerry and Pamela Notestine
Oak Acre Farms
Oak Bend Dairy
Oak Springs Ranch
Kevin O'Day
David and Betty Odell
Donna and Pat O'Halloran
John O'Keefe
Kevin and Donica O'Laughlin
Mike Olavari
Olive Growers Council of California
Joseph Oliver, Jr.
Olivera Egg Ranch LLC
C.M and Carol Olsen
C.J. Olson Cherries, Inc.
Donna Olson
Omonia Vineyards
Bernard and Barbara O'Neill
John O'Neill
Orland Veterinary Hospital, Inc.
Orr Family Trust
Oso Libre Por Vida, Inc.
Ota Family Trust
Carl and Paula Ott
Clifford and Sheri Overmier
Overton Orchards
Bill Owens Ranch
P & N Enterprises
Cecil and Ella Pace
Jerry and Mary Ruth Page
Donna Palmer
Nick Papadakis
Barbara and Clifton Paregien, Jr.
Parentex Enterprises
Pasquale and Judith Parenti
Matt Parker Hay Company
Scolay and Anna Parker
Carla Parsons
Robert and Roy Parsons
Clarence Parson, Jr.
Barbara and Kent Pascoe
Steve and Mary Pastor
Florence Patra
Alfred and Clara Patane
Phyllis Patane
Richard Patra
Regnar Paulsen
Scott Paulsen
John and Esther Pedevilla
Pedretti Ranches
Pedroni Westside Ranch
Brad Peek
Peltzer Ranch, Inc.
Beryl V. Penacho Trust
Clos Pepe Vineyards, LLC
Stephen Pepe
Richard and Maria Pereira
Bob and Marje Perkins
J.E. and Yvonne Perrin
Arthur and Dianne Perry
Ed and Charlotte Perry
Harold Peterson
Daniel Pettigrew
Edwin Phillips
Phippen Bros.
Piazza Ranch
George and Bernadine Piccardo
Helen Pidduck
Richard W. Pidduck Ranch
Betty Pimentel
Norm and Loadel Piner
Ray Pinoli
Pitigliano Farms
Pleasant Valley Ranch
Plymouth Elementary School Gardens
Alfonso Pogolotti, Jr.
Greg Pombo Farms
Charles and Deborah Poochigian
Kristin Power
Diane Powers
Precissi Flying Service, Inc.
Mary Prewett
Price Family Vineyards, LLC
Jerry and Cynthia Prieto
Prima Frutta Packing
Primex Farms, LLC
John and Deidre Putnam
Pylman Vineyards, Inc.
Calvin and Kathleen Qualsef
Tim and Christine Quigley
R & J Anderson Properties L.P.
R. A. Cattle Co.
R. B. Sandrini Farms
R. Rossi Co.
Rain For Rent
Ralph Properties II
Ramon and Connie Ramirez
Gil Ramos
Rancho Abuelos
Rancho El Recuerdo
Rancho Filoso
Cynthia Rapaido
Raspo Farming Company
Raymond Ratto and Joanne Marie Lippi
David Raube
R.D.C. Farms, Inc.
John and Anne Read
Douglas and Barbara Rebok
Al and Ailene Redamonti
Virginia Reed
Rees Agricultural Services
Lance Reeves
Ronald Reeves
Kelle Reich and Jeanne Furrier
Dorothy and Milton Renfree
Dieter and Lois Renker
Evelyn Renon
Bessie Reynolds
Richter Aviation, Inc.
Rico Farm Labor
Rincon Farms, Inc.
Patricia Riordan
Albera and Armond Rist
Riverview Farms
Jud Roberts
Hal Robertson Farms
William and Claire Robertson
Carol and Norman Robinson
Majilda Robinson
Laird Roddick
Roe Oil Company, Inc.
Edwin and Carolyn Rohner
Marie and Dennis Roller
Paul and Carol Rollin
Larry and Lynn Rolston
Gerald and Elaine Rominger
Rich and Evelyn Rominger
Roy Rominger
Hedwig Roripaugh
M.F. Rosa Dairy
Ofis and Jean Rosasco
David and Monica Rosenthal
Kenneth and Janet Rosenthal
Rotta Ranch
John and Ann Rourke
Roushall Farms
Joan Dean and Charles Rowe
James and Lori Rumsey
Running Springs Ranch
Rush, Marcroft & Associates
Hubbard Russell, Jr.
Theodore and Mary Russell
Thomas and Carolyn Russell
S & S Enterprises
Sacramento County Farm Bureau
Phyllis Sakioka
Yokoyama
Salman Farms, Inc.
Mike and June Salter
Claire Sample
San Felipe Properties, Inc.
San Gabriel Nursery & Florist
San Joaquin Stanislaus Cattle Women
San Mateo County Farm Bureau
Craig V. Sands
Accountancy Corporation
Genevieve Sanguinetti

Donor Support

- Michael Sanguinetti
Santa Ysabel Ranch, Inc.
David Santos Farming
Louis and Dorothy
Santucci
Ralph and Paula
Sarmento
Kathleen Sartori
Russell Satake and Anita
Lusebrink
C.W. Sawyer
SB Voelz
SBS AG
The G&D Scarbrough
Family LP
Schadler Ranch, Inc.
Maud Schaefer
Alexander and Stacey
Schmidt
Schrack Drilling
Schuller's Orchard
Gerald Schwartz
Bob and Martha Scofield
Bruce and Nanette Scott
Lester and Joanna Scott
Scully Packing Company
SDM Realty
Sears Point Farming
Company
John and Mary Seeger
Serrato & Son Grove
Care
Sepse Farm
Management
Seus Family Farms, LLC
Dan and Dee Shannon
Edward Sharp
Shell & Bryant Farming
L. John and Chudeen
Sheppard
John Shuler
Mary Siebe
Sierra Orchards
Sierra-Cascade Nursery,
Inc.
Warren and Frances
Sievers
Joe Silva
Mary Silva
Deborah and Les
Simmons
Helen Simmons
James and Ellen
Simonich
Joe and Patricia Sims
Simson Land & Livestock
Stephen Sinton
Sisbro Enterprises
Neal and Adele Sisson
Jerry Slough Farming
Company
Smith & Hook/Hahn
Estates Winery
Smith & Sons Ranch
Smith Vineyards
Carson and Sonja Smith
George and Helen Smith
Marilois Mothers
SnackCrack, Inc.
Wayne Snell
Elmer and Barbara
Snider
Sohnrey and Son Family
Farm
Joey and Hiromi
Somawang
Sonoma-Marin
Cattlemen
John Sorci
Mindy Sotelo
Southern Valley Chemical
Doris Spangler
Mary Lee Spencer
John Spolsdoff
Sprague Family Trust
Elizabeth Springer
Leroy and Pat Spuhler
- Joseph and Patricia
Spychaj
June Stagg
Stanislaus County Farm
Bureau
Marilyn Stanley
Marion and Viola Stanley
Rod and Carol Stark
Charles and Joan Starn
Charles and Mary Joan
Starr
Kathryn Starr
Starr & Starr Cotton
Growers
Steamboat Acres
Margaret Steffen
Patricia Stever
Dave and Susanne
Stirling
FR. Stokes Orchards
Debbie and Fred Stolp
Edwin and Marilyn Stone
Henry Stone
Jack Stone
Stover Ranch
Rodney Strong Vineyards
Stuke Nursery Company,
Inc.
Margaret Sturtevant
Sunnyside Packing
Company
Sunset Ranch
Superior Cattle Feeders,
LLC
Superior Fruit Ranch, Inc.
Sutter Basin Growers
Cooperative
Robert and Alice Swaim
Kenneth Swinger
Taglio Ranch
Sadako Tanaka
Michael and Cathy
Tanner
Carroll and Nancy
Taresh
Maxine and Richard
Taresh
Helen Tashjian
Taylor Backhoe Service,
Inc.
Walter Taylor
Tea Pot Dome Water
District
Telles Ranch
J.K. Thille Ranches
A.V. Thomas Produce,
Inc.
Charles Thompson
James and Hilda Thorne
Three Mac Farms, Inc.
Ronald Timothy Farming
Ruth and Tom
Tjersandsen
Tobias Ranch
John Tobias
Kenneth and Katherine
Todd
Larry Togninali Farms
Tom's Hillside Farming
Raymond and Deborah
Tonella
Gar Tootelian, Inc.
Jim and Paula Tojen
Travis Ag Construction
Irrigation
Triple B Ranch, Inc.
Sally Tripp
Tri-Valley Vineyard
MGMT., Inc.
J. Trolan Family
True Organic Products
Antonio Tsirelas
Cheryl and Duane Tubbs
Tulare County Farm
Bureau
Betty Anne and Bill
Tulloch
- Tunzi, Inc.
Antone Turkovich
Arthur and Jean Turner
Lyle and Suzanne Turpin
Arthur and Louise Turrin
Debra and Thomas
Twisselman
Liz and Paul Ubrun
Ulm Farms, Inc.
Marilyn and William Ulm
Donald and Saralee
Ulrich
Underhill Enterprises, Inc.
Union Bank
V.F.M., Inc.
Valley Farms
Valley Oak Orchard
Raymond and Katherine
Van Beek
J.C. Van der Have
Leonard and Cynthia
Van Elderen
Daryl Vanella
Joseph Van Gundy
Seymour and Wilma Van
Gundy
Van Klaveren Farms
James Van Maren
David and Valerie Vanni
Donald and Sharon
Vanni
Gilbert Vannoy
Leo and Rita Vanoni
Vasconi Ranch Account
George and Marlys Veeh
Ignazio and Sarah Vella
Ventura County
Agricultural Association
Mary Ventura
Vereschagin Financial
Berf and Betty Verger
Willo Vieira
Barbara and Wayne
Vineyard
Vista Vineyard
Management
Vogt Ranches
Vogt Western Silver, Ltd.
Fred Voorhees
Michael and Ellen
Voorhees
Helen and Ron Voss
Duane Vrbas
Wagner Dairy
Wilbur Wagner
Berf Walters & Sons
Byron and Ellen Walker
Judith Walker
William and Margaret
Wallace
Wally's Tire and Wheel
Steven and Melissa
Walraven
John and Elaine Walters
Ward Ranches
Warnken's Farm
Jerry Warren
Phillip and Doris
Washburn
Anne and Tak Watanabe
Water Resource
Engineering
Water Tech
Susanna Waterman
Larry and Marjorie
Waters
Marjorie Way
Louise Webb
Weinstock Vineyards
Sally and William
Weikamp
Cheri Wells
Carol and Gerald
Wenstrand
Marie West
Theodore and Evelyn
West

Donor Support

Western Ag Services,
LLC
Western Agri-Radio
Networks
Western Farm Center
Westland Floral
Company
Westside Vineyards, LLC
A.J. and Siv Wheeler
Emily White
Howard and Darlene
White
Marjorie Whitendale
Jane Whitley
Whitney Warren Ranch,
Ltd.
Maryn Whitney
Vernon and Mary
Wickstrom
Wicky-Up Ranch
Jeffrey and Nancy
Wiedemann
Ann Wieser
Jack and Patricia Wilkey
Williams Bros.
David and Eleanor
Williams
Norman and Ruth
Williams
Stanley and Teresa
Williams
Terry Williams Farming
Wilsey Vineyard
Wilson Ag
Dave and Erma Wilson
Phyllis and Russell Wise
Ilene Wolf
Dana and Kyle Wolfe
Gregory and Ramona
Wolfe
Terrill, Russell & Kyle
Wolfe
William Wolhaupter
Wollam Grove
Management, Inc.
Ruth Wollenman
Wood Cattle Ranch, Inc.
Don and Marianne Wood
Wooster Ranch
Wylatti Timber
Management
Company
Mutsuko Yamada
Chiyoko Yamaguchi
David and Kathy
Yarbrough
Ransom Yarger
Kathy and Woody Yerxa
Brent Young
Robert Young Vineyards
Rick and Janette
Yribarren
Dave and Rhonda Ysusi
Zane Ranch
Laura and Mark Zohns
Marvin Zolezzi
Zwinkels Trust

Memorials

Marina Arredondo
Jim and Judy
Culbertson
Harry Baker
Clifton and Barbara
Paregien
Wayne E. Biehler
Mahlon and Claire Hile
Lois Casale
CJB & Associates, LLC
Jim and Judy
Culbertson
Dee Cederlind
Joseph and Majorie
Miller
Marge Clarke
Dave and Jane
Roberti
John Colombini
San Mateo County
Farm Bureau
Karen Cox
Paul and Diana Wells
Helen Del Ponte Allgauer
Paul and Diana Wells
Kenneth Emerson
Clifton and Barbara
Johnson
Betty Fairclough
Arthur and Louise
Turrin
Evelyn Gehri
Paul and Diana Wells
Godfather Bob
Kevin O'Day
Nicolas Gagnani
Rick and Janette
Yribarren
George Hamatani
Salman Farms, Inc.
Eldon Henry
Paul and Diana Wells
Barbara Kast
Elmer and Jolita
Eckart
Mary Kozono
Jim and Judy
Culbertson
Milton LaMalfa
Mary Miller and
daughters, JoAnn and
Janet
Don Laub
Dan and Geri Byrne
California Farm Bureau
Federation
CJB & Associates, LLC
Jim and Judy
Culbertson
Raymond and Debbie
Jacobsen
Ronald Laub
Bill, Lynn and Hans
Petters
Pitigliano Farms
Charles and Deborah
Poochigian
Gary and Yvette Sack
David Schwabauer
and Michael McMahan
Tulare County Farm
Bureau
Hans Lauwerijssen
Gary and Yvette Sack
Joe Mapes
Jim and Judy
Culbertson
Dolores "Dede" Mariani
Mitchell Mariani
Charles J. Maridon
Marilyn and Frank
Dorsa
Dee Munk
County Farm Bureau
Managers
Linda Crockett
Jim and Judy
Culbertson
Gary and Yvette Sack
Mindy Sotelo
Stanislaus County
Farm Bureau
O'Neill Parents
Bernard and Barbara
O'Neill
Donald Roop
Jim and Judy
Culbertson
Jean Runyon
Jim and Judy
Culbertson
Buck Simpson
Jim and Judy
Culbertson
Eugene Strawn
Marilois Smothers
Gaye Stever
Tricia Stever
Fay Sutfin
John and Anne Read
Nancy Tibbitts
Jim and Judy
Culbertson
Gary and Yvette Sack
Joseph Vajretti
Bobby and Marlea
Massey
John Wheeler
Pam Emery
Ard Kozono
Gary and Yvette Sack
Salman Farms, Inc.
Bill and Laura Tower
Dorothy Williamson
Jack and Sherry Olsen
Tim Wilson
Jim and Judy
Culbertson
Louisa Wisendanger
Paul and Diana Wells
David Yenni
Jim and Judy
Culbertson
Gary and Yvette Sack
Bill Zehrung
CompanyBConfederate
States Marine Corps
James and Joan Craig
Jim and Judy
Culbertson
Margaret Sturtevant
Bill and Gerie Zehrung
Nancy Harris
Dorothy Zielesch
Hazel and Nils Pultz

Donor Support

In Kind

American AgCredit
Margaret Anderson
Marsha Diane Arnold
Dan Atwood
Banana Slug String Band
Beyda for Books
The Blue Ribbon Group
Dick and Cathie Bradley
Stella Cadente Olive Oil
Company
California Asparagus
Commission
California Association of
Winegrape Growers
California Cherry
Advisory Board
California Cotton
Growers & Ginners
Assns.
California Department of
Education
California Dried Plum
Board
California Fertilizer
Foundation
California Fig Advisory
Board
California Grown
Campaign
California Milk Advisory
Board
California Pear Advisory
Board
California Poultry
Federation
California State
Beekeepers
Association, Inc.
California State Fair
California Strawberry
Commission
CAPCA
CJB & Associates, LLC
Coiner Nursery
Color Spot
Corjo Olive
D'Arrigo Brothers
Company
Diamond Foods
David J. Elliot & Sons
Food, Land & People
G. Graham Wines
Greene and Hemly
Jonnalee Henderson
Hoyman-Brow Studio
Huntington Library, Art
Collections, and
Botanical Gardens
Husch Vineyards
Junior Master Gardener

Kallisto Greenhouses
Kenwood Vineyards
Langtry Estate &
Vineyards
Leonesse Cellars
McFadden Farm and
Vineyards
Mendocino Wine
Company and
Parducci Wine Cellars
Mendocino Winegrape &
Wine Commission
Joseph Mohamed
Enterprises
Monrovia
Monte De Oro Winery
Napa County Farm
Bureau
National Watermelon
Promotion Board
Alexis Norgard
Nurserymen's Exchange,
Inc.
Orange County Land
Management
Pacifica Farms
Prima Frutta Packing
Project WET
Rabobank
Raymond Vineyards
Chris Ruddick
Sacramento County
Farm Bureau
Santa Rosa High School
Shamrock Artisan Goat
Cheese
Six Sigma Ranch &
Winery
Jo and Stephen Smith
Sonoma Valley Visitors
Bureau
Sunkist Growers
Sun-Maid Growers of
California
Tulare County Farm
Bureau
Tulip Hill Winery
Urban Tree Farm
Village Nurseries
Vino Farms
Water Education
Foundation
Paul and Deborah
Wenger
West Cal Tractor
Westlake Miller Brookes
and Sims
Wiens Family Cellars

Honorariums

Allen Crosby Hardison II
Crane Estate, Inc.
Ms. Buzz Fisher
Sally Tripp
Doug Mosebar
Bill and Laura Tower
Jim and Judy
Culbertson



California Foundation for
Agriculture in the Classroom

www.cfaitc.org

2300 River Plaza Drive • Sacramento, CA 95833

(800) 700-AITC (2423) • cfaitc@cfbf.com

